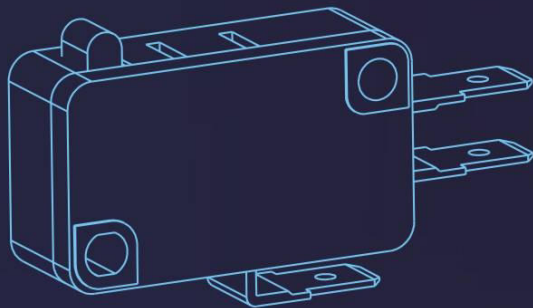
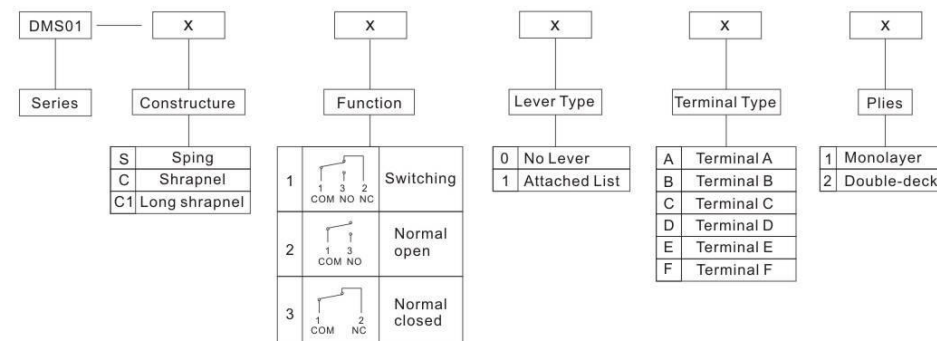
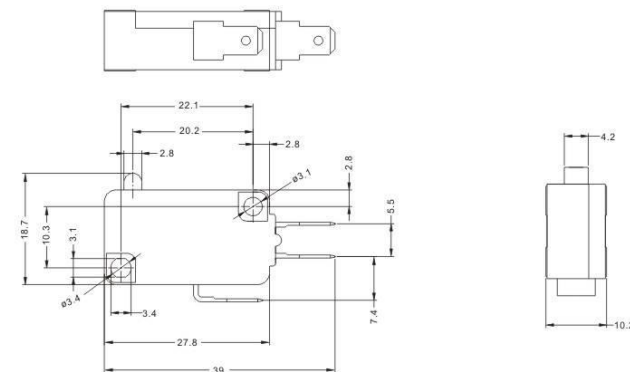
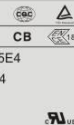


微动开关 <<< MICRO SWITCH



RATINGS AND APPROVALS:

- 16(4)A 250VAC μ T125 5E4
- 16(4)A 250VAC μ T105 5E4
- 24.9(10)A 125/250VAC μ T125 5E4
- 16(10)A 125/250VAC μ T125 5E4
- 10A 125/250VAC μ T125 5E4
- 10A 125/250VAC μ T150 1E4
- 16A 36VDC μ T125 5E4
- 1/2HP 125VAC μ T125 1E5
- 3/2HP 250VAC μ T125 1E5



Terminal options

Terminal A	Terminal B	Terminal C	Terminal D	Terminal E	Terminal F

(Lever options (According to customers')requirement)

RATINGS AND APPROVALS:

- 10(3)A 250VAC μ 25T125 1E4
- 5A 250VAC μ 25T125 1E4
- 5(5)A 250VAC μ 25T125 1E4
- 5A 250VAC μ 25T125 1E4
- 5A 250VAC μ 25T125 1E4
- 10RA 125/250VAC μ T125 1E5
- 10RA 36VDC μ T125 5E4
- 3/4HP 250VAC μ T150 1E4
- 3/4HP 250VAC μ T125 1E4

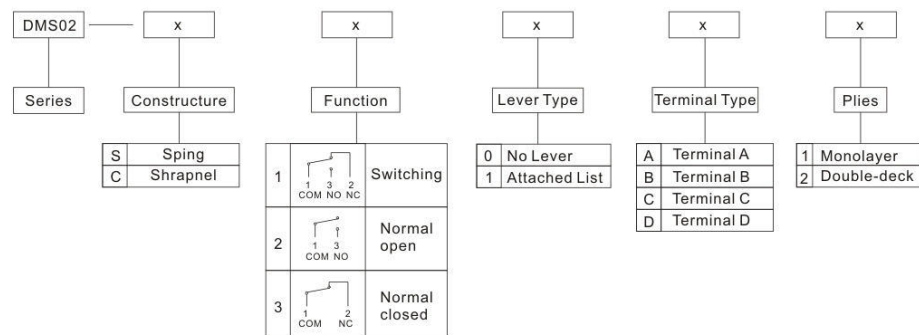
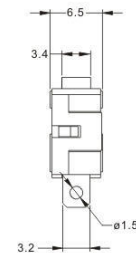
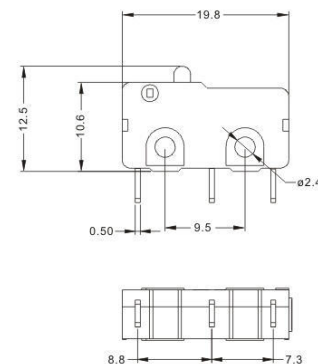
CBC CB

△

18

15

15



Terminal options

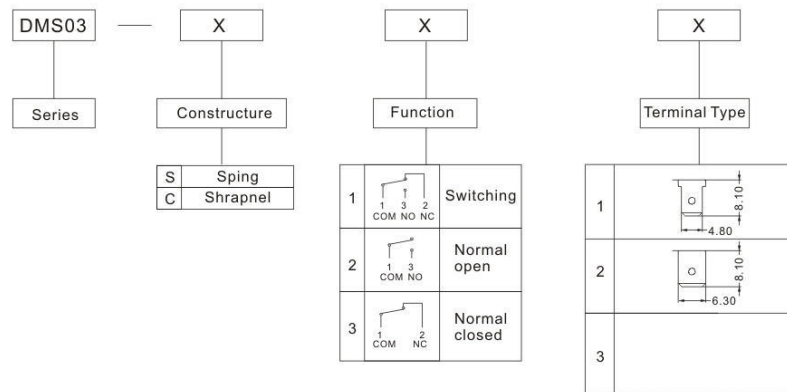
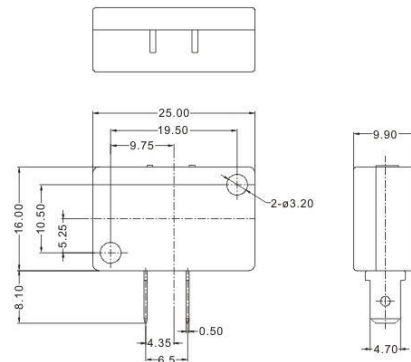
Terminal A	Terminal B	Terminal C	Terminal D

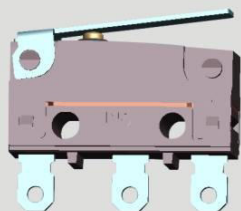
Lever&Knob options (According to customers' requirement)

1	2	3	4
Knob A	Knob B	Lever A	Lever B
5	6		
Lever C	Lever D		

RATINGS AND APPROVALS:

● 5A 250VAC μ 25T125 1E4



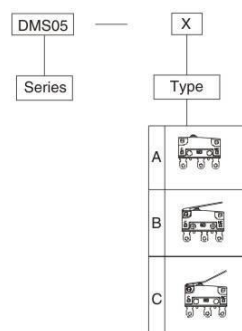
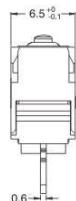
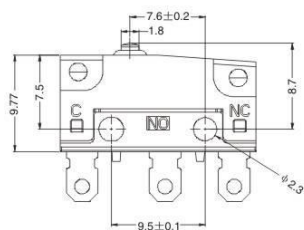


SPECIFICATION:

- Waterproof

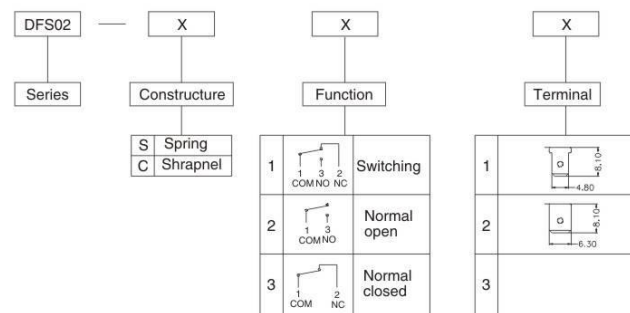
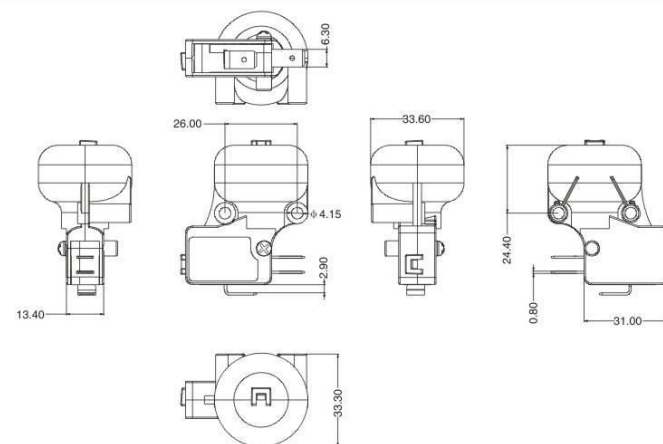
RATINGS AND APPROVALS:

- 1A 250VAC T125 1E4



RATINGS AND APPROVALS:

- 16A 125VAC μ T125 5E4
- 10A 250VAC μ T125 5E4
- 16(4)A 250VAC



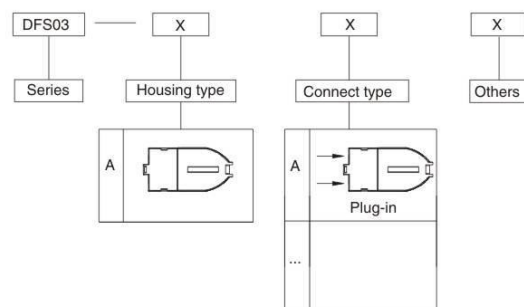
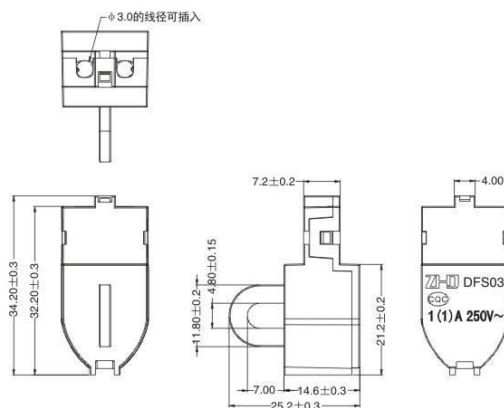


SPECIFICATION:

- single pole, single/double throw

RATINGS AND APPROVALS:

- 1(1)A 250VAC T85 6E3



船形开关 <<< ROCKER SWITCH



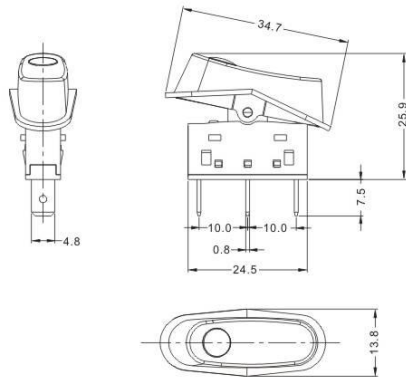


SPECIFICATION:

- 6.3x0.8 and 4.8x0.8 quick-connect terminal

RATINGS AND APPROVALS:

- 10(3)A 250V ~ T125 1E4
- 10(3)A 250V ~ T125/55 1E4



Series	Housing type	Function	Cover type	Terminal	Marking	Color of Housing	Color of Cover
DRS01-4	X	X	X	X	X	X	X
A	1	ON-OFF (Lighted)	1	1	1	B Black	B Black
B	2	ON-OFF (Unlighted)	2	2	2	R Red	R Red
C	3	ON-ON (Unlighted)	3	3	3	G Grey	G Grey
D			4	4	4	W White	W White
					5	R Red	R Red
					6	E Green	E Green
					7	U Blue	U Blue
					8	W White	W White
					9	G Grey	G Grey
					10	T Transparent	T Transparent
					11	O Other	O Other

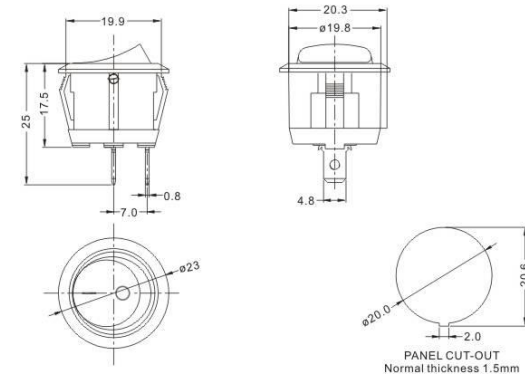


SPECIFICATION:

- 4.8x0.5 and 4.8x0.8 quick-connect terminal
- 6.3x0.5 and 6.3x0.8 quick-connect terminal

RATINGS AND APPROVALS:

- 10(6)A 250V ~ T125 1E4
- 10(6)A 250V ~ T125/55 1E4
- 10(6)A 250V ~ T85/55 1E4
- 16A 125VAC T85 1E4
- 10A 250VAC T85 1E4



Series	Housing type	Function	Terminal	Marking	Color of Housing	Color of Cover
DRS01-11	X	X	X	X	X	X
A	1	ON-ON	1	1	B Black	B Black
B	2	ON-OFF (Lighted)	2	2	R Red	R Red
C	3	ON-OFF (Unlighted)	3	3	G Grey	G Grey
D	4	(ON)-OFF (Momentary-on)	4	4	W White	W White
E	5	ON-OFF-ON (Center-Off)	5	5	R Red	R Red
	6	(ON)-OFF (Momentary-on) (Lighted)	6	6	E Green	E Green
	7	(ON)-OFF-ON (Momentary-on)	7	7	U Blue	U Blue
			8	8	W White	W White
			9	9	G Grey	G Grey
			10	10	T Transparent	T Transparent
			11	11	O Other	O Other

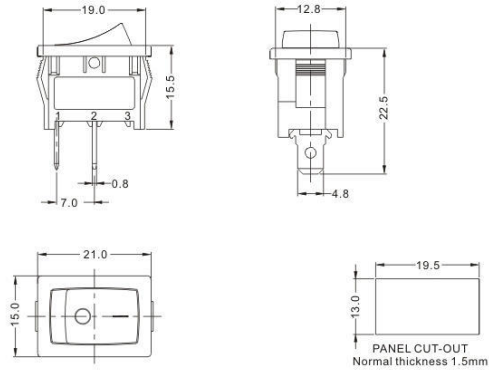


SPECIFICATION:

- 4.8x0.5 and 4.8x0.8 quick-connect terminal

RATINGS AND APPROVALS:

- 10(6)A 250V ~ T125 1E4 CB
- 10(6)A 250V ~ T125 1E4
- 10(6)A 250V ~ T125/55 1E4
- 16A 125VAC 1/4 HP T105 1E4
- 10A 250VAC 1/4 HP T105 1E4



DRS01-B	X	X	X	X	X	X	X
Series	Housing type	Function	Terminal	Marking	Color of Housing	Color of Cover	Special
1		1 ON-ON (Lighted)	1	1	B Black	B Black	A None
2		2 ON-OFF (Unlighted)	2	2	G Grey	R Red	B Water Proof
3		3 ON-OFF (Unlighted)	3	3	W White	E Green	
4		4 (ON)-OFF Momentary-on	4	4	R Red	U Blue	
		5 (ON)-OFF (Momentary-on) (Lighted)	5	5	E Green	W White	
		6 (ON)-OFF (Momentary-on) (Lighted)	6	6	G Grey	G Grey	
		7 (ON)-OFF-ON Momentary-on	7	7	O Other	T Transparent	

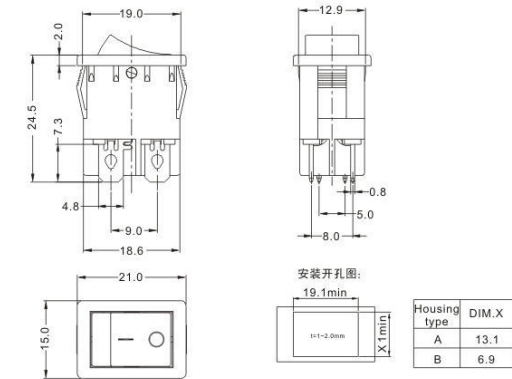


SPECIFICATION:

- 4.8x0.8 quick-connect terminal

RATING AND APPROVAL:

- 10(6)A 250V ~ T105 1E4 CB
- 10(6)A 250V ~ T105 1E4



DRS01-D1	X	X	X	X	X	X	X
Series	Housing type	Function	Terminal	Marking	Color of Housing	Color of Cover	Special
A		1 ON-OFF (Unlighted)	1	1	B Black	B Black	A None
B		2 ON-OFF (Unlighted)	2	2	G Grey	R Red	B Water Proof
		3 ON-OFF (Lighted)	3	3	W White	E Green	
		4 ON-OFF (Lighted)	4	4	R Red	U Blue	
		5 ON-OFF (Lighted)	5	5	E Green	W White	
		6 No Marking	6	6	O Other	G Grey	

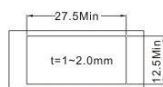
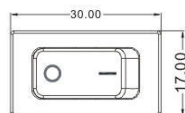
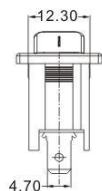
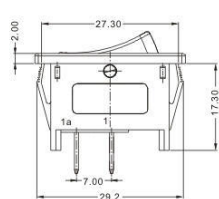


SPECIFICATION:

- 4.8x0.8 quick-connect terminal

RATINGS AND APPROVALS:

- 6(2)A 250V~ T100/55 1E4



DRS02	X	X	X	X	X	X	X
Series	Housing type	Function	Terminal	Marking	Color of Rocker	Color of Housing	Special
A	1 ON-OFF	1	1	1	B Black	B Black	A None
			2	2	R Red	G Grey	B Water Proof
			3	3	E Green	W White	
			4	4	U Blue	R Red	
			5	5	W White	E Green	
			6	6	G Grey	O Other	
					T Transparent		
					O Other		

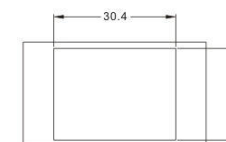
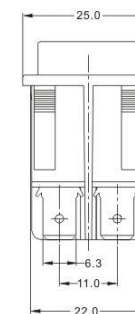
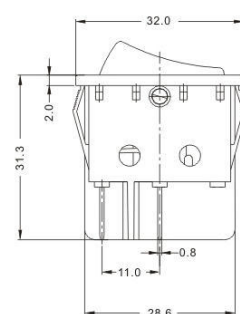


SPECIFICATION:

- 6.3x0.8 quick-connect terminal

RATINGS AND APPROVALS:

- 16(6)A 250V~ T85/55 1E4
- 16(6)A 250V~ T125/55 1E4
- 16(6)A 250V~ T125/55 1E4



PANEL CUT-OUT
Normal thickness 1.5mm

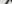
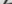
DRS03	X	X	X	X	X	X	X
Series	Housing type	Function	Terminal	Marking	Color of Housing	Color of Cover	Special
A	1	1 ON-ON	1	1	B Black	B Black	A None
	2	2 ON-OFF (Light)	2	2	G Grey	R Red	B Water Proof
	3	3 ON-OFF (Unlight)	3	3	W White	E Green	
	4	4 (ON)-OFF (Momentary-on)	4	4	R Red	U Blue	
	5	5 ON-OFF-ON (On state Momentary on)	5	5	E Green	W White	
	6	6 ON-OFF-ON (Center-off)	6	6	O Other	G Grey	
						T Transparent	
						O Other	

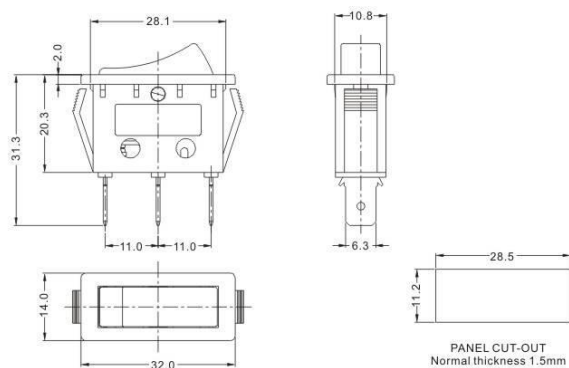


SPECIFICATION:

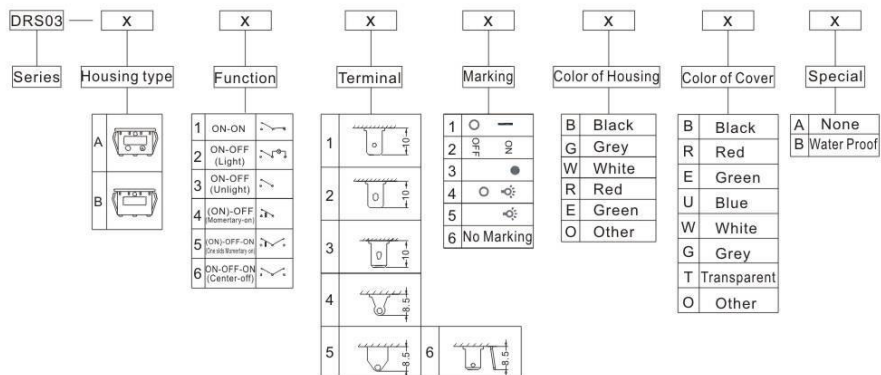
- 6.3x0.8 quick-connect terminal

RATINGS AND APPROVALS:

- | | |
|----------------------------|---|
| ● 16(6)A 250V~ T85/55 1E4 | CB |
| ● 16(6)A 250V~ T125/55 1E4 |  |
| ● 16(6)A 250V~ T125/55 1E4 |  |



PANEL CUT-OUT
Normal thickness 1.5mm

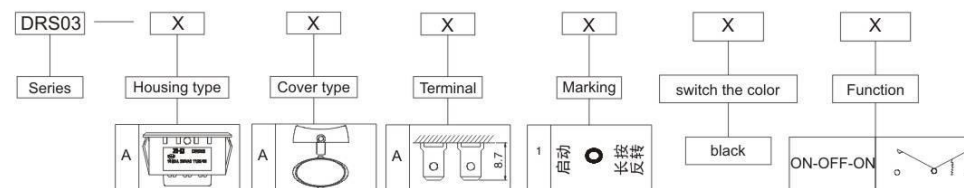
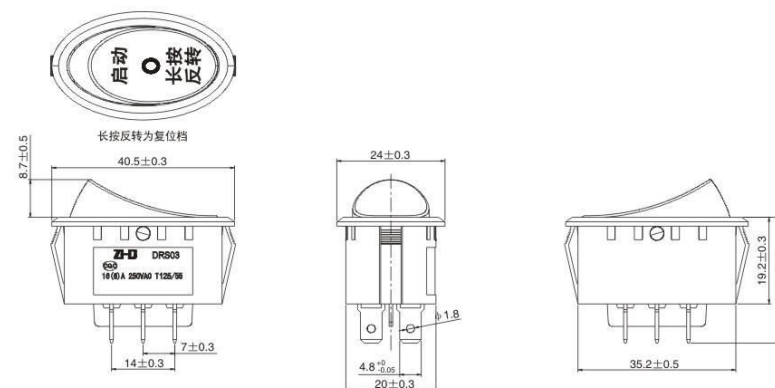


SPECIFICATION:

- Elliptic double row boat switch, three gears with reset

RATINGS AND APPROVALS:

- 16(6)A 250VAC~T125/55



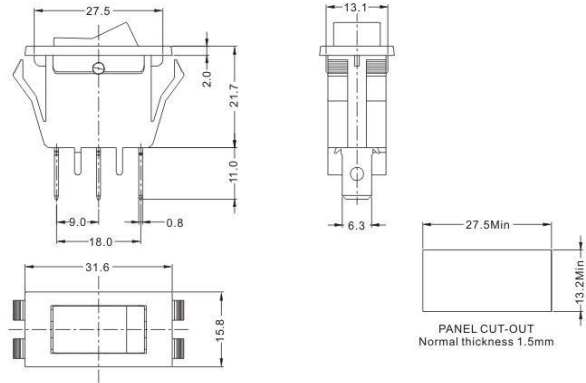


SPECIFICATION:

- 6.3x0.8 quick-connect terminal

RATING AND APPROVAL:

- 16(6)A 250V~ T85/55 1E4 **CB**
- 16(6)A 250V~ T125/55 1E4 **CCC**
- 16(6)A 250V~ T125/55 1E4 **UL**



DRS03	X	X	X	X	X	X
Series	Housing type	Function	Terminal	Marking	Color of Housing	Color of Cover
A		1 ON-OFF 2 ON-OFF (Light) 3 ON-OFF (Unlight) 4 (ON)-OFF (Momentary-on) 5 (ON)-OFF-ON (Double-latching on) 6 ON-OFF-ON (Center-off)	1 2 3 4 5	1 2 3 4 5 6 No Marking	B Black G Grey W White R Red E Green O Other	B Black R Red E Green U Blue W White G Grey T Transparent O Other
						A None B Water Proof

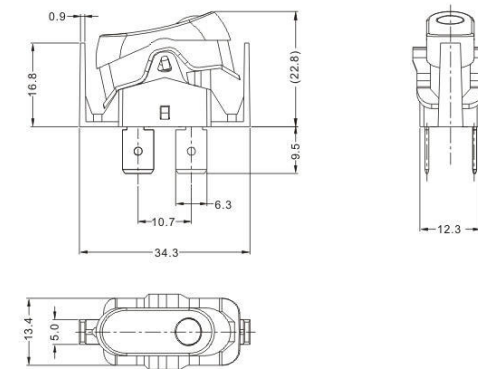


SPECIFICATION:

- 6.3x0.8 quick-connect terminal

RATINGS AND APPROVALS:

- 10(6)A 250V~ T125/55 1E4



DRS05	X	X	X	X	X	X
Series	Housing type	Function	Terminal	Marking	Color of Housing	Color of Cover
A		1 ON-OFF (Lighted) 2 ON-OFF (Unlighted)	1 2 3	1 2 3 4 5 6 No Marking	B Black G Grey W White R Red E Green O Other	B Black R Red E Green U Blue W White G Grey T Transparent O Other

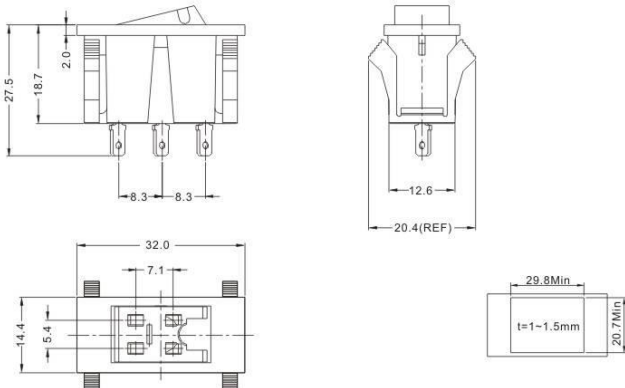
SPECIFICATION:

- 4.8x0.8 quick-connect terminal



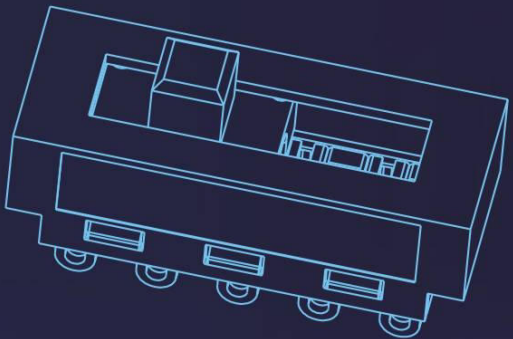
RATINGS AND APPROVALS:

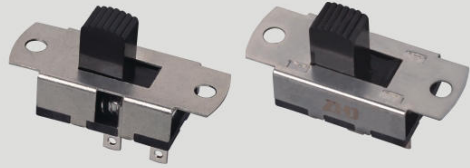
- 10(6)A 250V ~ T125 1E4
- 10A 125/250V ~ T125 1E4
- 10A 125/250V ~ T105/55 1E4
- 10A 125/250V ~ T105 1E4



DRS07	X	X	X	X	X																																								
Series	Housing type	Function	Terminal	Color of Housing	Color of Cover																																								
A		<table><tr><td>1</td><td>ON-OFF</td><td></td></tr><tr><td>2</td><td>(ON)-OFF (Momentary-on)</td><td></td></tr></table> <p>Momentary on on-off (Normal Open)</p>	1	ON-OFF		2	(ON)-OFF (Momentary-on)		<table><tr><td>1</td><td></td></tr><tr><td>2</td><td></td></tr><tr><td>3</td><td></td></tr></table>	1		2		3		<table><tr><td>B</td><td>Black</td></tr><tr><td>G</td><td>Grey</td></tr><tr><td>W</td><td>White</td></tr><tr><td>R</td><td>Red</td></tr><tr><td>E</td><td>Green</td></tr><tr><td>O</td><td>Other</td></tr></table>	B	Black	G	Grey	W	White	R	Red	E	Green	O	Other	<table><tr><td>B</td><td>Black</td></tr><tr><td>R</td><td>Red</td></tr><tr><td>E</td><td>Green</td></tr><tr><td>U</td><td>Blue</td></tr><tr><td>W</td><td>White</td></tr><tr><td>G</td><td>Grey</td></tr><tr><td>T</td><td>Transparent</td></tr><tr><td>O</td><td>Other</td></tr></table>	B	Black	R	Red	E	Green	U	Blue	W	White	G	Grey	T	Transparent	O	Other
1	ON-OFF																																												
2	(ON)-OFF (Momentary-on)																																												
1																																													
2																																													
3																																													
B	Black																																												
G	Grey																																												
W	White																																												
R	Red																																												
E	Green																																												
O	Other																																												
B	Black																																												
R	Red																																												
E	Green																																												
U	Blue																																												
W	White																																												
G	Grey																																												
T	Transparent																																												
O	Other																																												

拨动开关 <<< SLIDE SWITCH



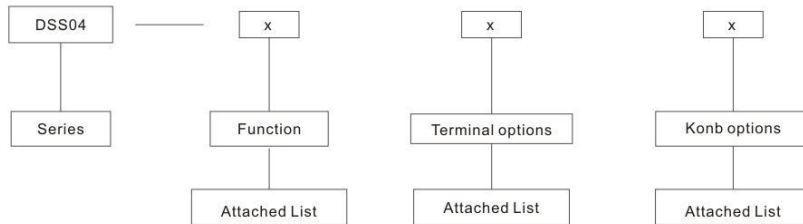
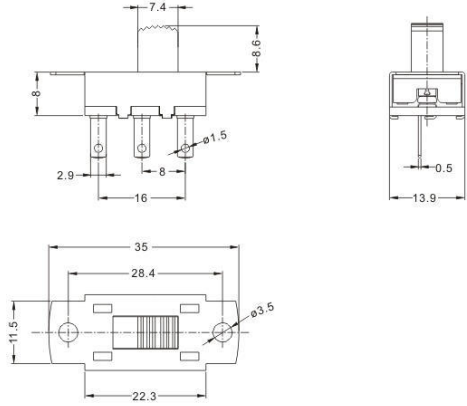


SPECIFICATION:

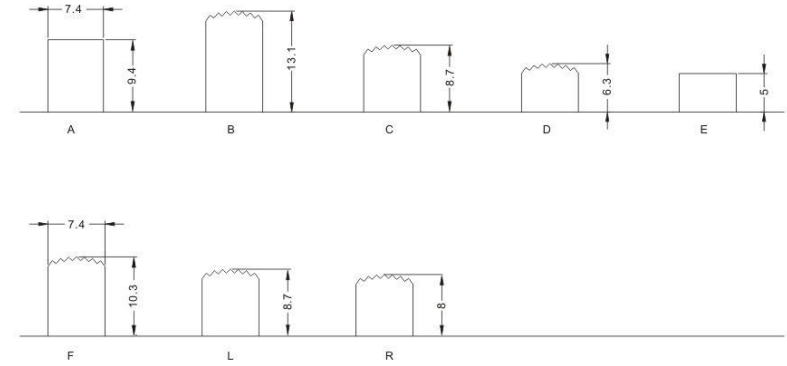
- single pole, single/double throw

RATINGS AND APPROVALS:

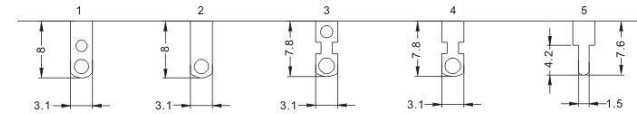
- 13A 125VAC T105 1E4
- 6A 125/250VAC T105 1E4
- 3A 125/250VAC T105 1E4



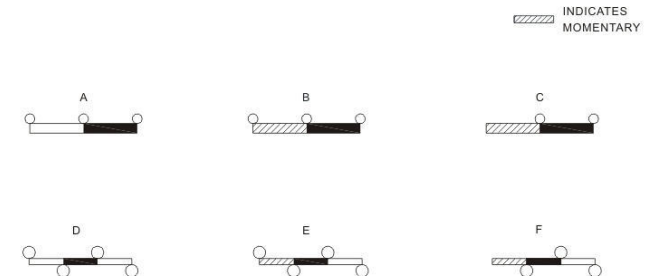
Konb options:



Terminal options:



Function:



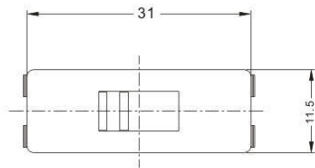
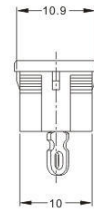
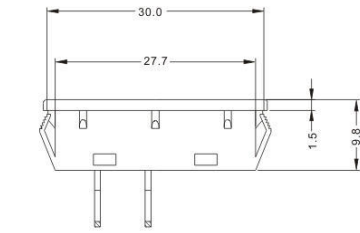


SPECIFICATION:

- Double pole multi-position

RATINGS AND APPROVALS:

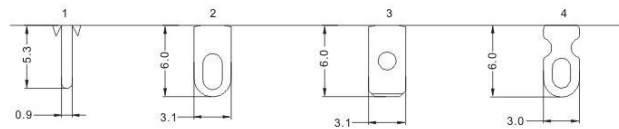
- 10(1)A 250VAC T85 1E4



Function:



Terminal options: (Thickness: 0.8mm)

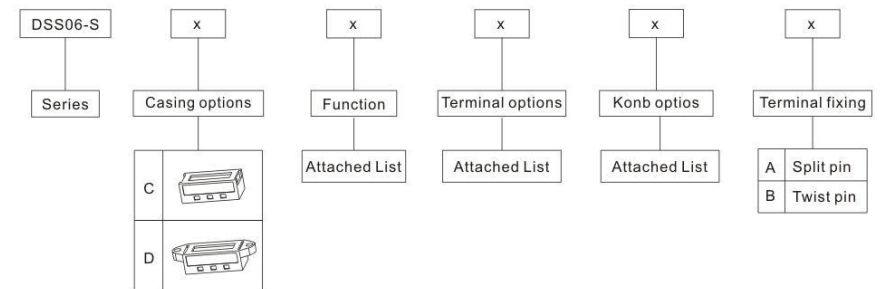
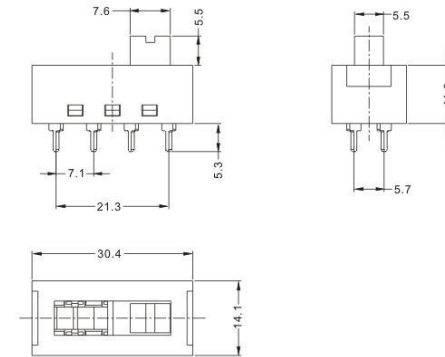


SPECIFICATION:

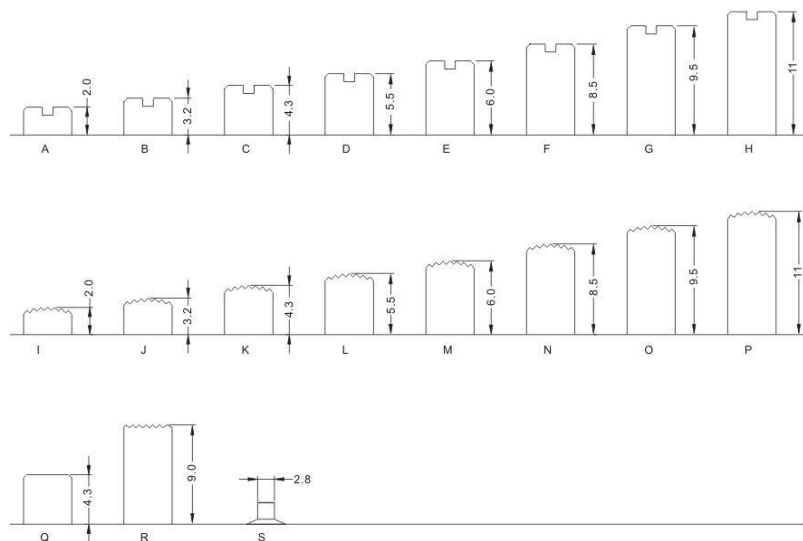
- Double pole, multi-position

RATINGS AND APPROVALS:

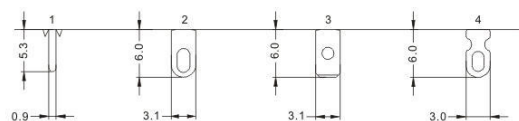
- 10A 250VAC T105 1E4
- 6A 250VAC T125 1E4
- 6A 125/250VAC T105 1E4
- 3A 125/250VAC T105 1E4
- 13A 125VAC T105 1E4
- 6A 125/250VAC T105 1E4
- 3A 125/250VAC T105 1E4



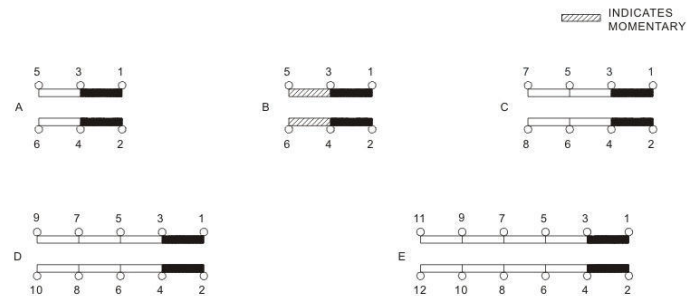
Konb options:



Terminal options:(Thickness:0.8mm)



Function:



SPECIFICATION:

- Double pole, multi-position

RATINGS AND APPROVALS:

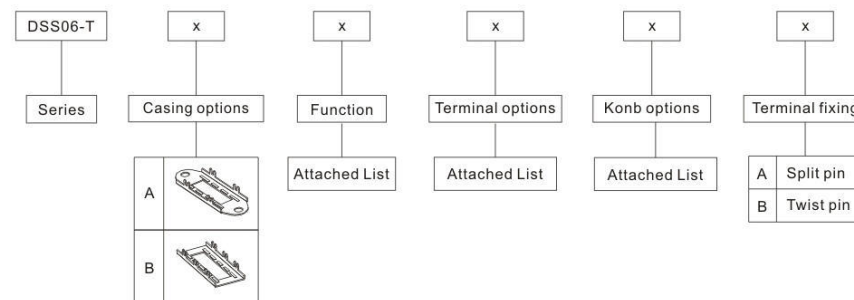
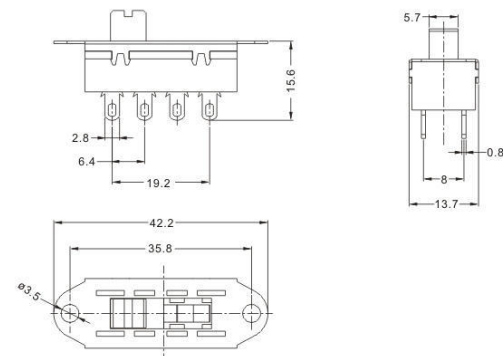
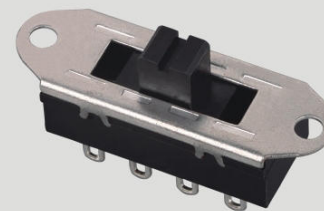
- 8A 250VAC T105 1E4
- 6A 250VAC T125 1E4
- 6A 125/250VAC T105 1E4
- 3A 125/250VAC T105 1E4

CQC

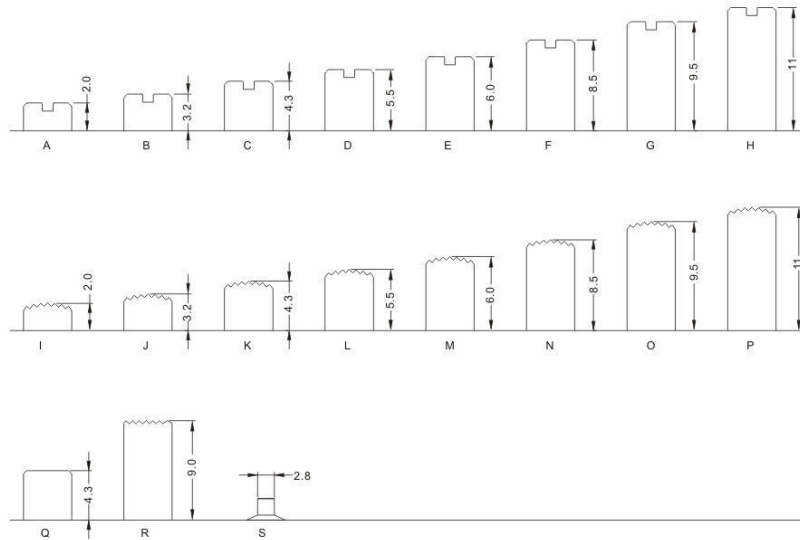
△

CCC

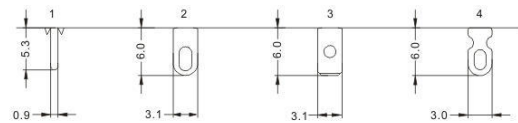
18



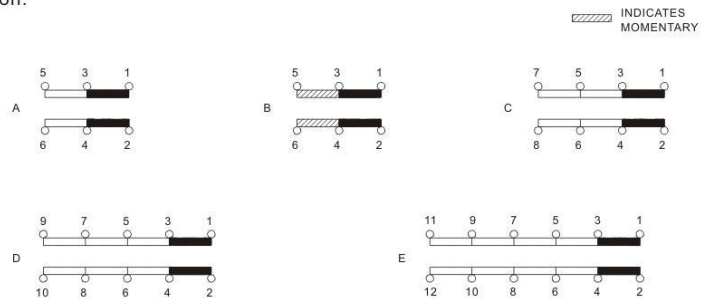
Konb options:



Terminal options: (Thickness: 0.8mm)



Function:

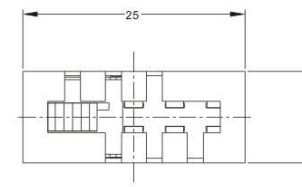
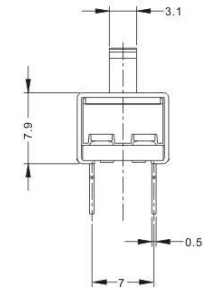
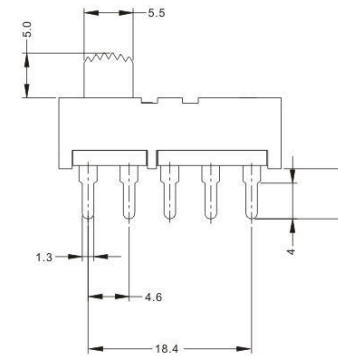
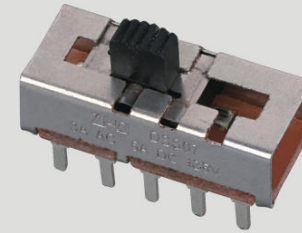


SPECIFICATION:

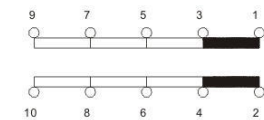
- Double pole, multi-position

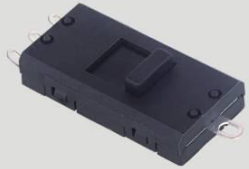
RATINGS AND APPROVALS:

- 5A 125VDC
- 3A 125VAC



Function:



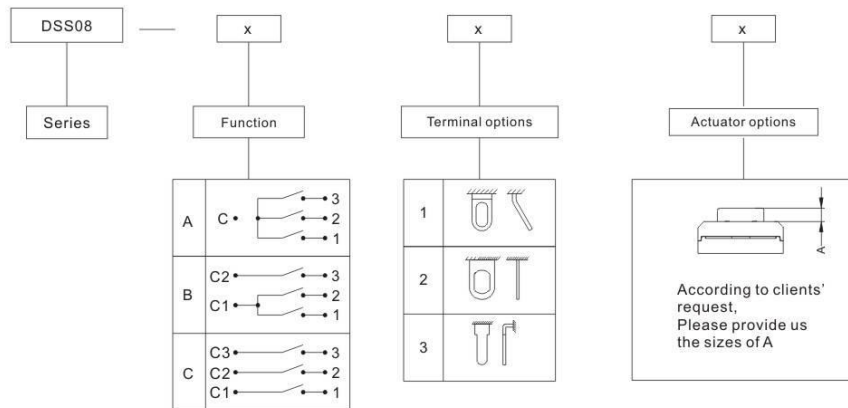
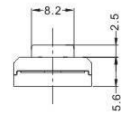
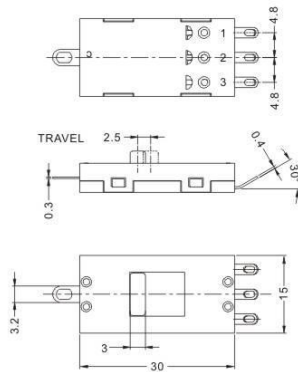


SPECIFICATION:

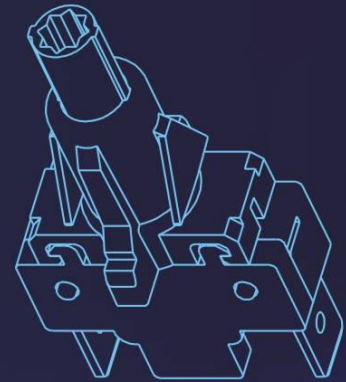
- double pole, multi-position

RATINGS AND APPROVALS:

- 13A 250VAC T125 1E4
- 10(6)A 250VAC T125 1E4



按钮开关 <<< PUSH BUTTON SWITCH



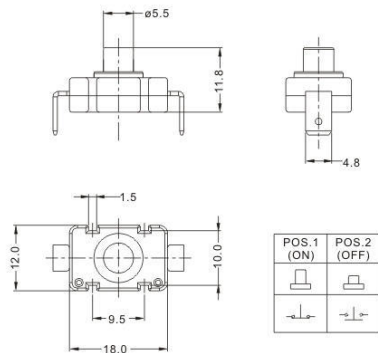


SPECIFICATION:

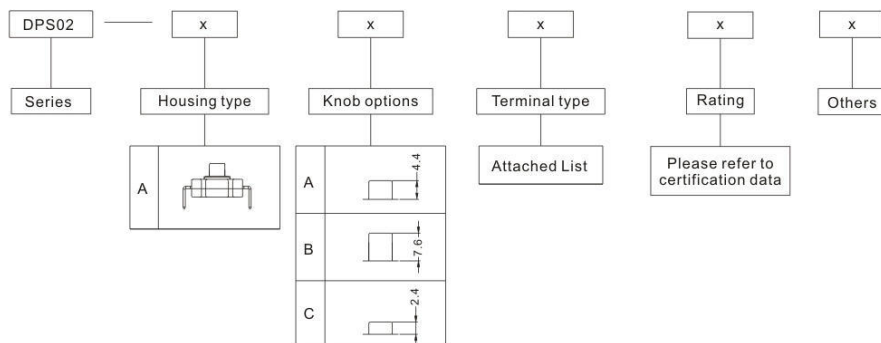
- single pole, single/double throw

RATINGS AND APPROVALS:

- 3A 250VAC T85 1E4



Terminal Type:			
1		5	
2		6	
3		7	
4		8	

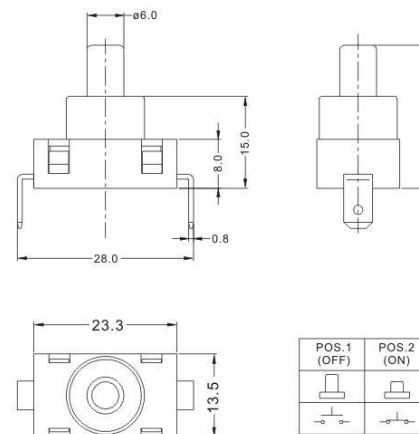


SPECIFICATION:

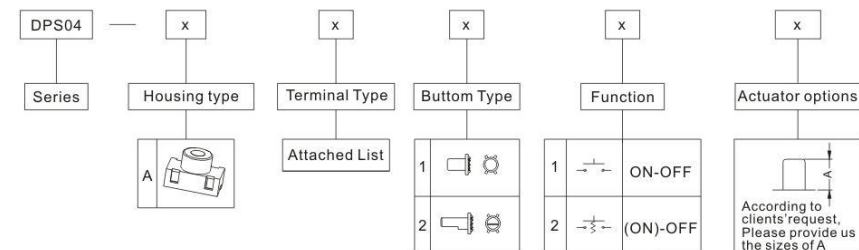
- Single pole, single throw

RATINGS AND APPROVALS:

- 10(6)A 250VAC μ T105 1E4



Terminal Type:			
A		B	
C		D	
E		F	
G		H	

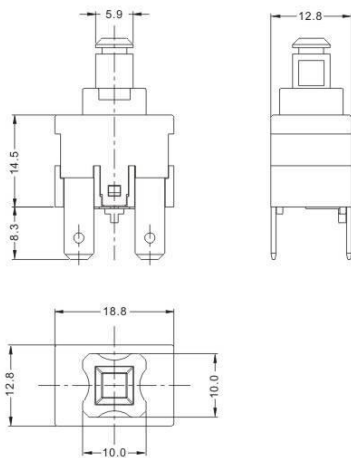


SPECIFICATION:

- Single pole, single/double throw

RATINGS AND APPROVALS:

- 16(4)A 250VAC T105 1E4
- 15(10)A 250VAC T125 1E4
- 12(8)A 250VAC T125 1E4
- 10(6)A 250VAC T125 1E4
- 1/2HP 125/250VAC T125 1E4



Terminal Type: (DPS05-A)	
1	4
2	5
3	6

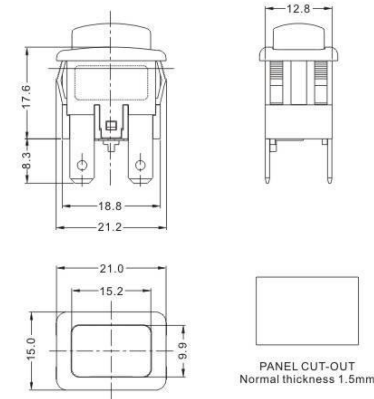
DPS05	X	X	X	X
Series	Housing type	Illuminated	Locked	Terminal Type
	A B C	1 Illuminated 2 NO illuminated	1 Locked 2 No locked	Attached List

SPECIFICATION:

- single pole, single/double throw

RATINGS AND APPROVALS:

- 16(4)A 250VAC T105 1E4
- 15(10)A 250VAC T125 1E4
- 12(8)A 250VAC T125 1E4
- 10(6)A 250VAC T125 1E4
- 1/2HP 125/250VAC T125 1E4



Terminal Type: (DPS05-B)	
1	4
2	5
3	6

X	X	X	X
Poles	Actuator Colour	Housing Colour	Base colour
A B	B Black Y Yellow R Red Bl Blue W White	B Black Y Yellow R Red Bl Blue W White	B Black Y Yellow

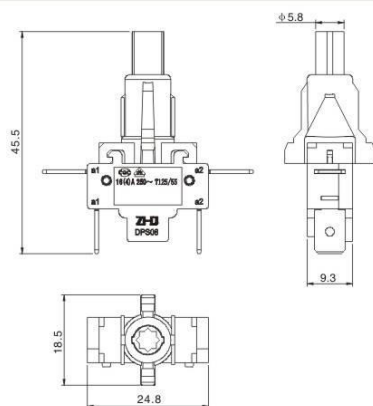


SPECIFICATION:

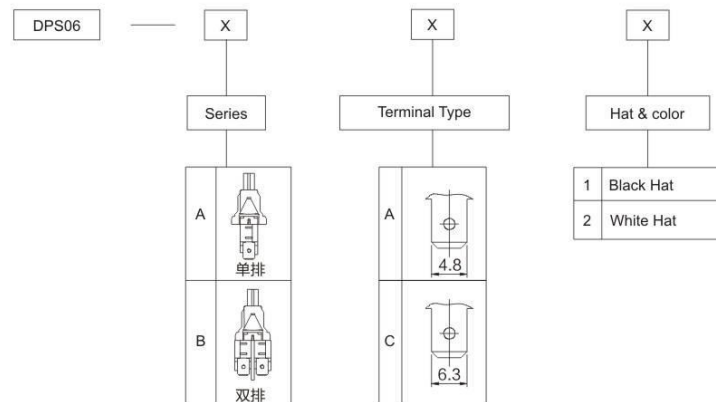
- Single pole, single/double throw

RATINGS AND APPROVALS:

- 16(4)A 250VAC T125 1E4



Momentary ON

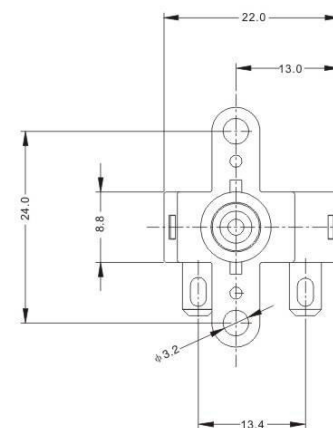
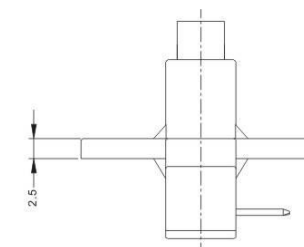
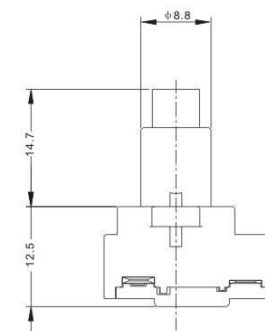


SPECIFICATION:

- Single pole, single/double throw

RATINGS AND APPROVALS:

- 16A 250VAC T85 1E4



Function



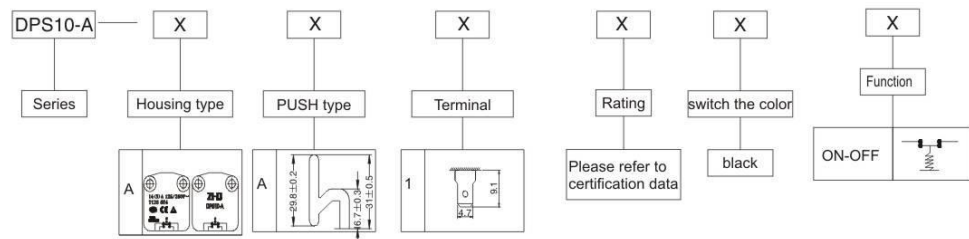
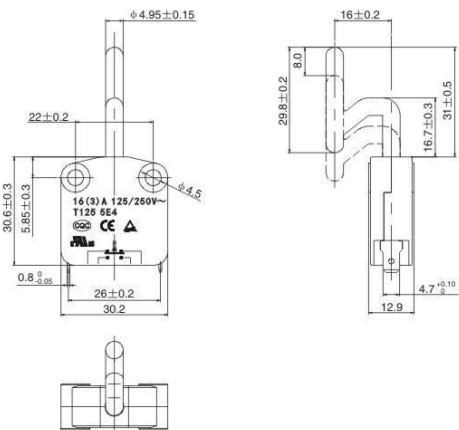


SPECIFICATION:

- inching button switch

RATINGS AND APPROVALS:

- 16(3)A 125/250V~T125 5E4

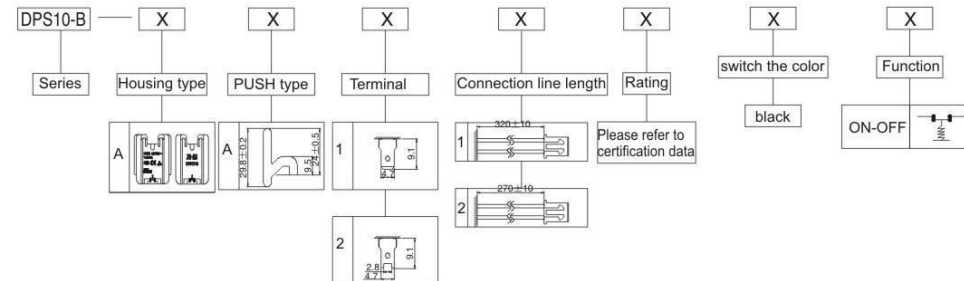
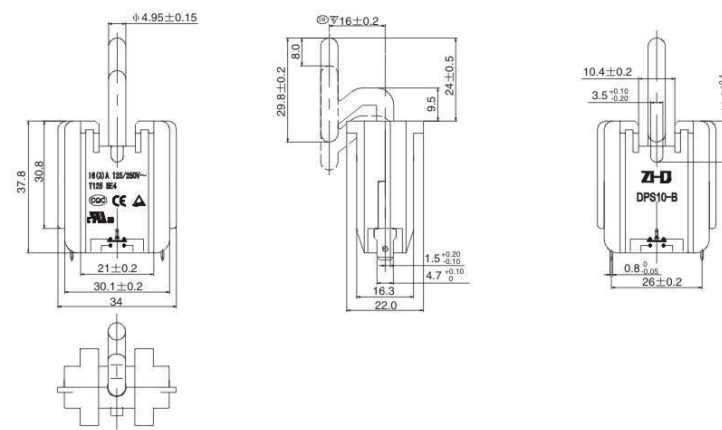
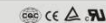


SPECIFICATION:

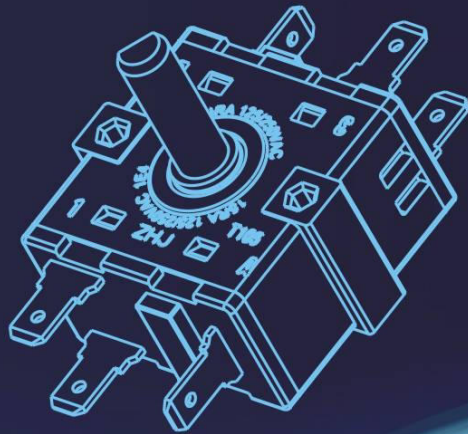
- inching button switch

RATINGS AND APPROVALS:

- 16(3)A 125/250V~T125 5E4



旋转开关 <<< ROTARY SWITCH

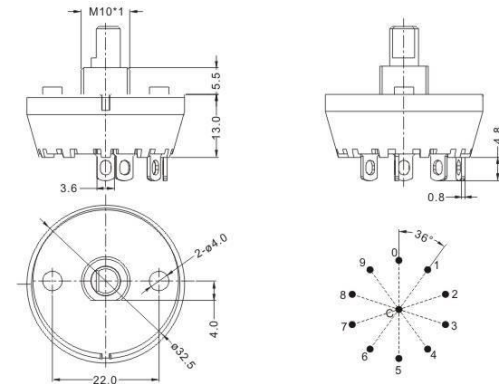


SPECIFICATION:

- Single pole, multi-position

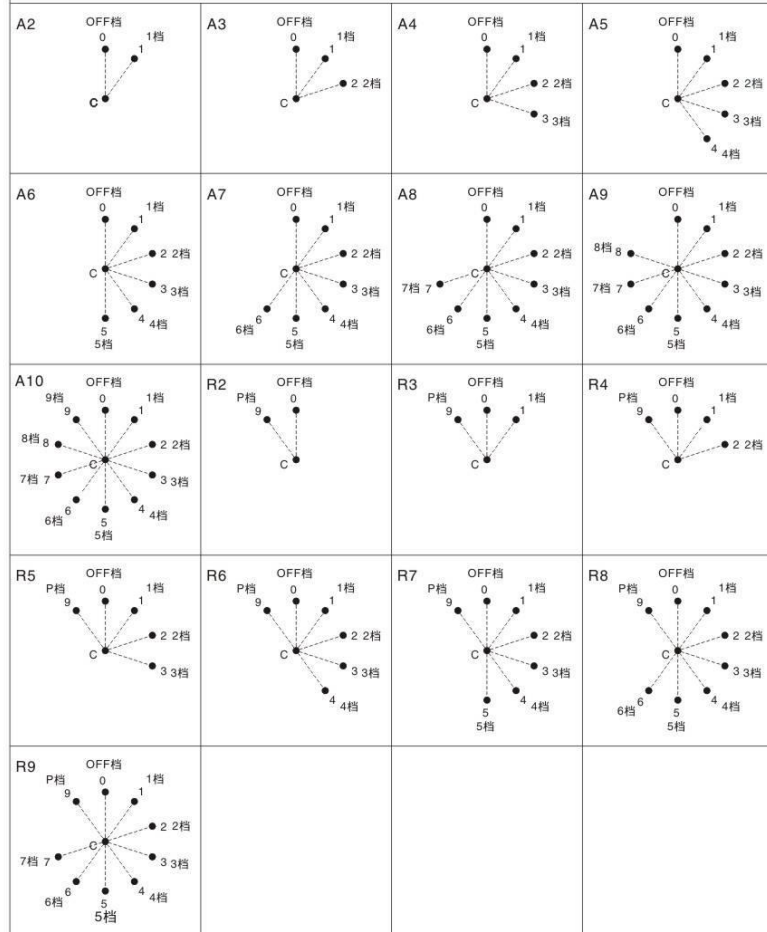
RATINGS AND APPROVALS:

- 6A 250V ~ T85 1E4
- 8(3)A 250V ~ T85 1E4
- 8R(3)A 125/250VAC T125 1E4
- 8RA 125/250VAC T125 1E4
- 6RA 125/250VAC T125 1E4
- 3R(3)A 125/250VAC T125 1E4
- 1RA 125/250VAC T125 1E4

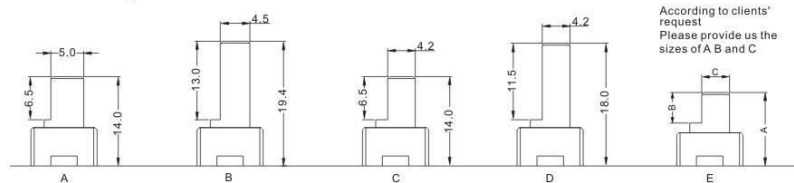


DXS01	X	X	X	X	X	X	X
Series	Housing type	Cover type	Momentary Function	Terminal	Actuator type	Terminal options	Circuit diagram
	B	B	1 Not Provided 2 Provided	02 2PIN 03 3PIN 04 4PIN 05 5PIN 06 6PIN 07 7PIN 08 8PIN 09 9PIN 10 10PIN	Ref attached circuit	B 3.8 F 2.8 E 60°	Ref attached circuit

Circuit diagram



Actuator type:



DXS01-C SERIES

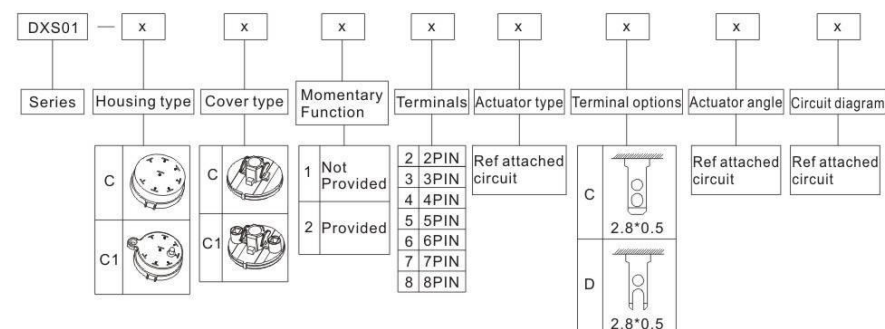
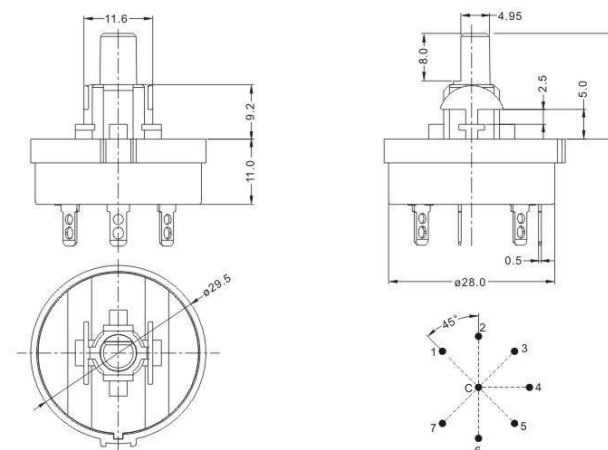
SPECIFICATION:

- Single pole, multi-position

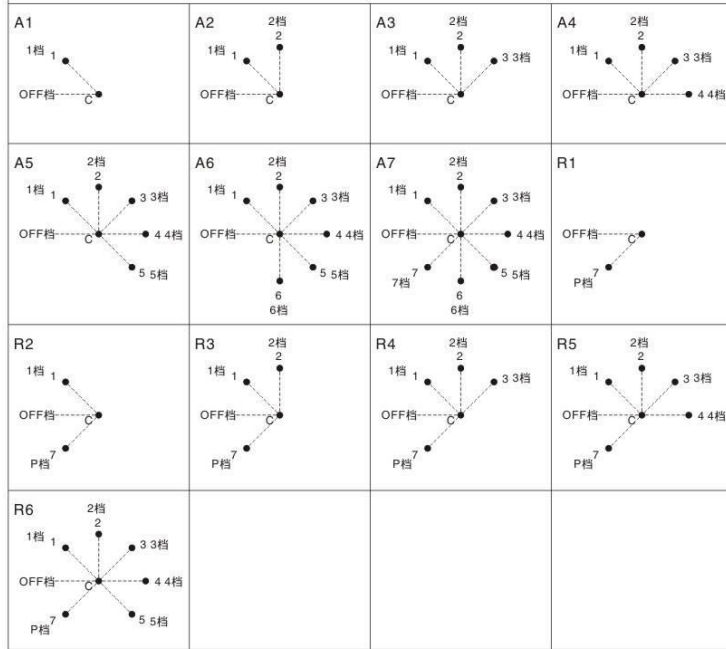


RATINGS AND APPROVALS:

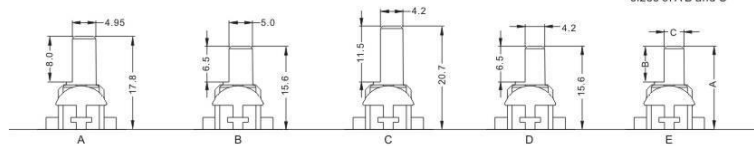
- 6A 250V ~ T85 1E4
- 8(3)A 250V ~ T85 1E4
- 8(3)A 125/250VAC T125 1E4
- 8RA 125/250VAC T125 1E4
- 6RA 125/250VAC T125 1E4
- 3(3)A 125/250VAC T125 1E4
- 1RA 125/250VAC T125 1E4



Circuit diagram

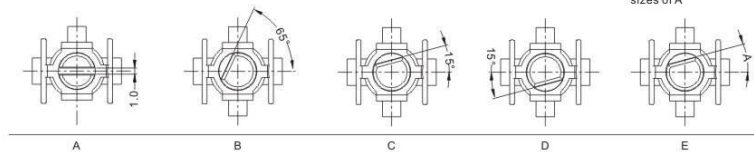


Actuator type:



According to clients' request, Please provide us the sizes of A and C

Actuator angle:



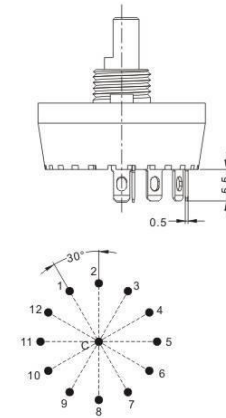
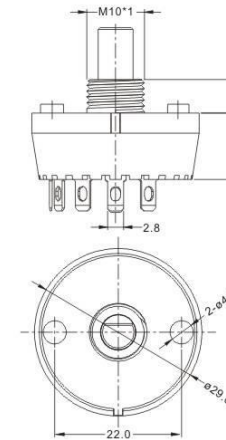
According to clients' request, Please provide us the sizes of A

SPECIFICATION:

- Single pole, multi-position

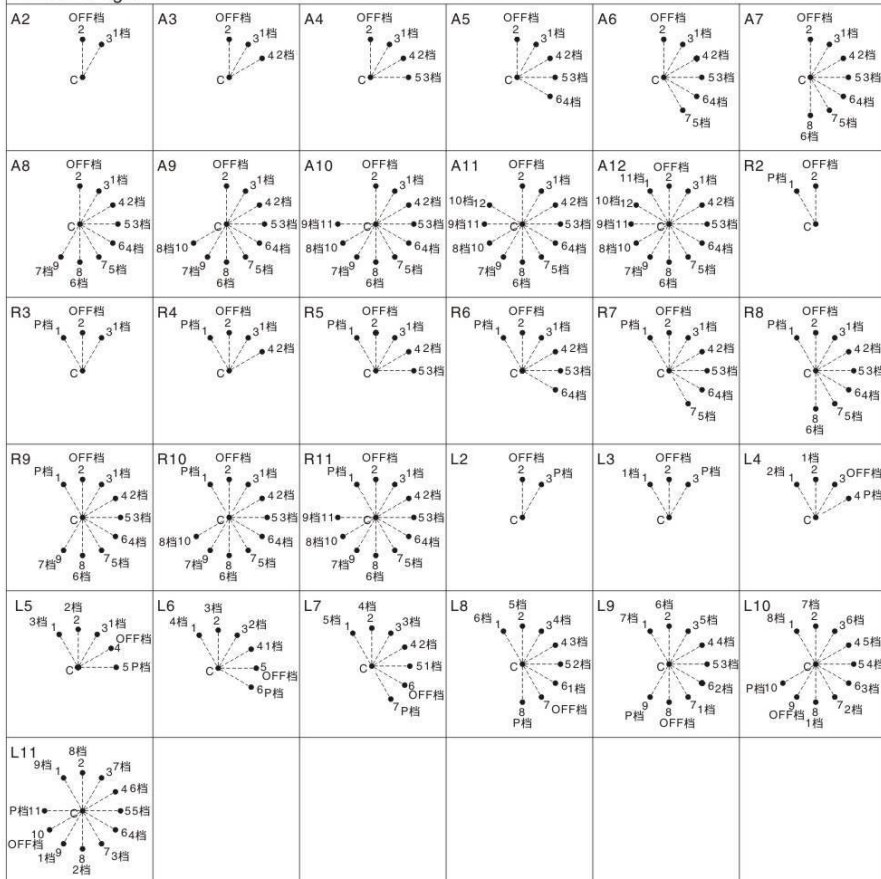
RATINGS AND APPROVALS:

- 6A 250V ~ T85 1E4
- 8(3)A 250V ~ T85 1E4
- 8R(3)A 125/250VAC T125 1E4
- 8RA 125/250VAC T125 1E4
- 6RA 125/250VAC T125 1E4
- 3R(3)A 125/250VAC T125 1E4
- 1RA 125/250VAC T125 1E4

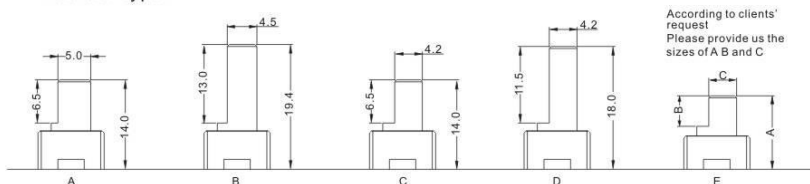


DXS01	X	X	X	X	X	X	X
Series	Housing type	Cover type	Momentary Function	Terminals	Actuator type	Terminal options	Circuit diagram
	D	A A1	1 Not Provided 2 provided	02 2PIN 03 3PIN 04 4PIN 05 5PIN 06 6PIN 07 7PIN 08 8PIN 09 9PIN 10 10PIN 11 11PIN 12 12PIN	Ref attached circuit	C 2.8*0.5 D 2.8*0.5 E 2.8*0.5	Ref attached circuit

Circuit diagram



Actuator type:



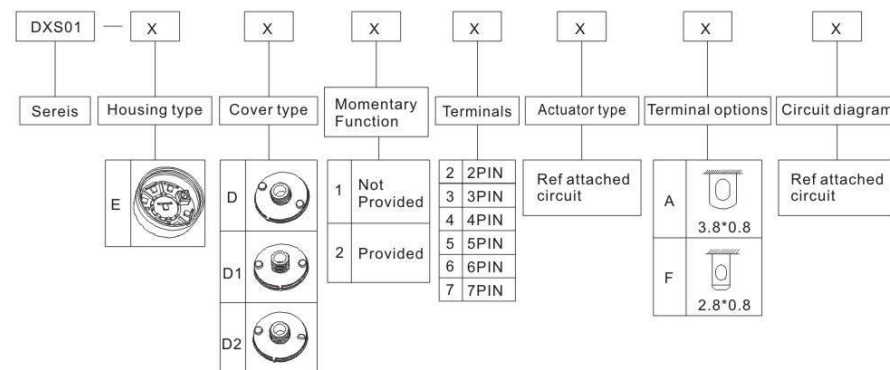
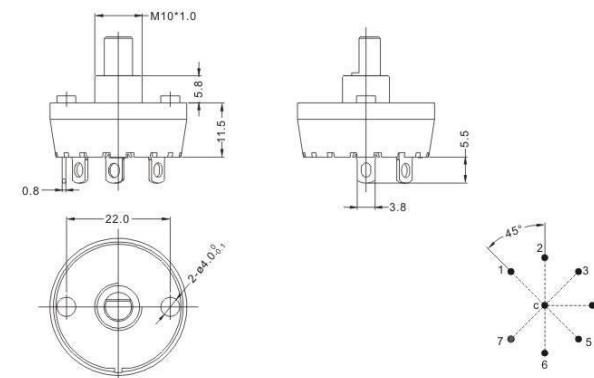
According to clients' request
Please provide us the sizes of A, B and C

SPECIFICATION:

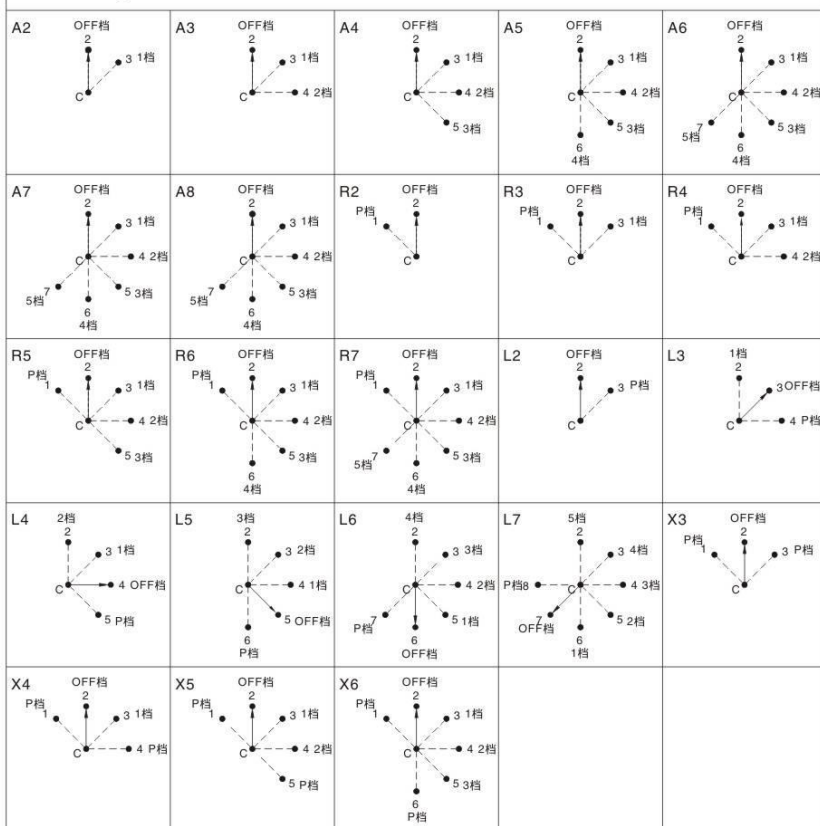
- Single pole, multi-position
- Terminal options

RATINGS AND APPROVALS:

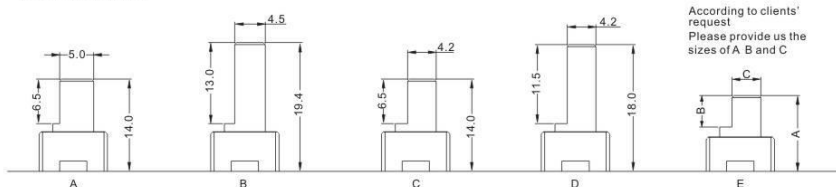
- 6A 250V – T85 1E4
- 8(3)A 250V – T85 1E4
- 8R(3)A 125/250VAC T125 1E4
- 8RA 125/250VAC T125 1E4
- 6RA 125/250VAC T125 1E4
- 3R(3)A 125/250VAC T125 1E4
- 1RA 125/250VAC T125 1E4



Circuit diagram



Actuator type:

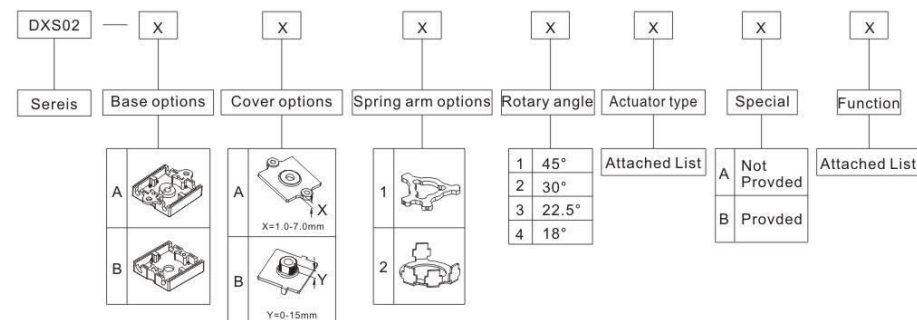
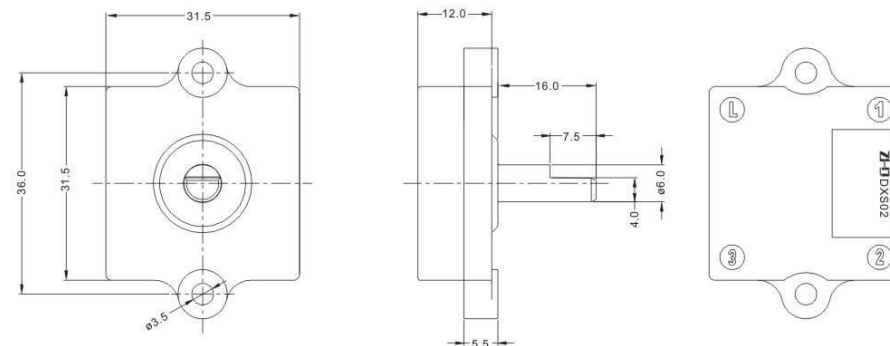


SPECIFICATION:

- Single pole, multi-position

RATINGS AND APPROVALS:

- 6A 250V ~ T125 1E4
- 13(3)A 125/250VAC T125 1E4
- 10A 125/250VAC T125 1E4
- 8(3)A 125/250VAC T125 1E4
- 6A 125/250VAC T125 1E4
- 3(3)A 125/250VAC T125 1E4
- 1A 125/250VAC T125 1E4



Actuator angle option list (According to clients' request)

A		B		C		D		E	
F		G		H		I		J	
K		L		M		N		O	
P		Q							

Actuator options list (Please provide us the sizes of A, B and C)

	A	3.85	3.9	3.95	4.0	4.1	4.2	4.45	4.9			
	B	4.0	7.2	7.4	7.5	7.8	7.9	8.0	9.0	9.3	9.4	9.5
	C	8.0	11.0	13.35	13.5	13.6	14.05	14.5	14.7	14.9	15.0	15.2
		15.4	16.0	16.3	16.5	16.7	17.0					

Function list 1					
NO.	P	0	1	2	3
P1	L-1	OFF	L-2		
P2	L-1	OFF	L-2	L-3	
P3	L-1	OFF	L-3	L-1	
P4	L-1	OFF	L-1	L-2	L-3

Function list 2			
NO.	1	2	3
N1	L-1	L-2	
N2	L-1	L-2	L-3
N3	L-1	L-1-2	L-3
N4	L-1	L-2	L-2-3
N5	L-1	L-1-2	L-1-3
N6	L-1-2	L-1-3	
N7	L-1-2	L-2-3	
N8	L-1-2	L-1-3	L-2-3

Function list 3				
NO.	0	1	2	3
0	OFF	L-1		
1	OFF	L-1	L-2	
2	OFF	L-1	L-2	L-3
3	OFF	L-1	L-1-2	L-3
4	OFF	L-1	L-2	L-2-3
5	OFF	L-1	L-1-2	L-1-3
6	OFF	L-1-2	L-1-3	
7	OFF	L-1-2	L-2-3	
8	OFF	L-1-2	L-1-3	L-2-3

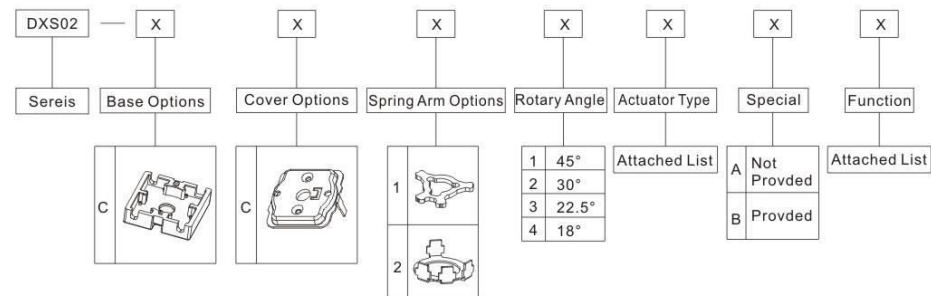
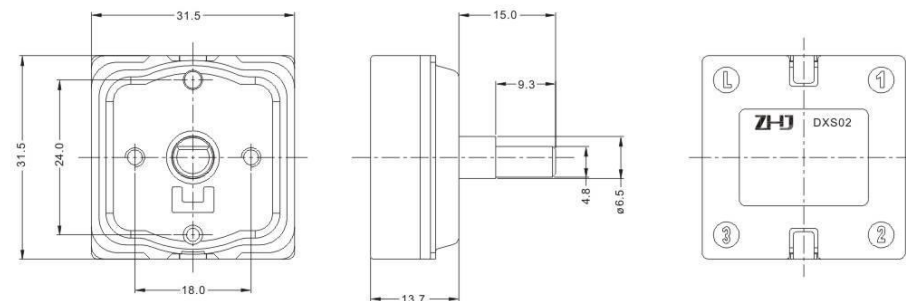


SPECIFICATION:

- Single pole, multi-position
- Push-in terminal
- Accepts AWG18&20 stranded wire with dipped strip length 8mm max
- Cover options
- Shaft options

RATINGS AND APPROVALS:

- 6A 250V – T125 1E4
- 13(3)A 125/250VAC T125 1E4
- 10A 125/250VAC T125 1E4
- 8(3)A 125/250VAC T125 1E4
- 6A 125/250VAC T125 1E4
- 3(3)A 125/250VAC T125 1E4
- 1A 125/250VAC T125 1E4



Actuator angle option list (According to clients' request)

A		B		C		D		E	
F		G		H		I		J	
K		L		M		N		O	
P		Q							

Actuator options list (Please provide us the sizes of A, B and C)

	A	3.85	3.9	3.95	4.0	4.1	4.2	4.45	4.9			
	B	4.0	7.2	7.4	7.5	7.8	7.9	8.0	9.0	9.3	9.4	9.5
	C	8.0	11.0	13.35	13.5	13.6	14.05	14.5	14.7	14.9	15.0	15.2

Function list 1						
NO.	P	0	1	2	3	
P1	L-1	OFF	L-2			
P2	L-1	OFF	L-2	L-3		
P3	L-1	OFF	L-3	L-1		
P4	L-1	OFF	L-1	L-2	L-3	

Function list 2				
NO.	1	2	3	
N1	L-1	L-2		
N2	L-1	L-2	L-3	
N3	L-1	L-1-2	L-3	
N4	L-1	L-2	L-2-3	
N5	L-1	L-1-2	L-1-3	
N6	L-1-2	L-1-3		
N7	L-1-2	L-2-3		
N8	L-1-2	L-1-3	L-2-3	

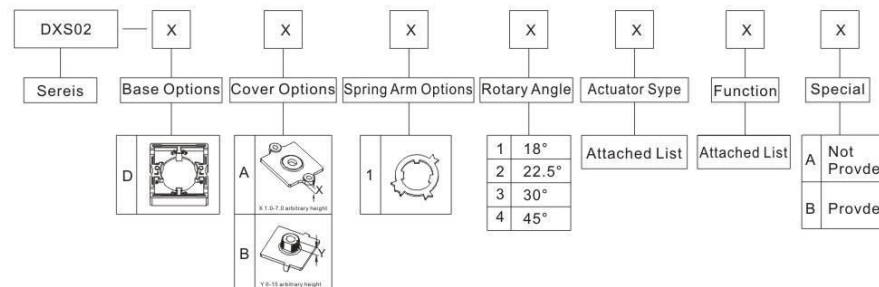
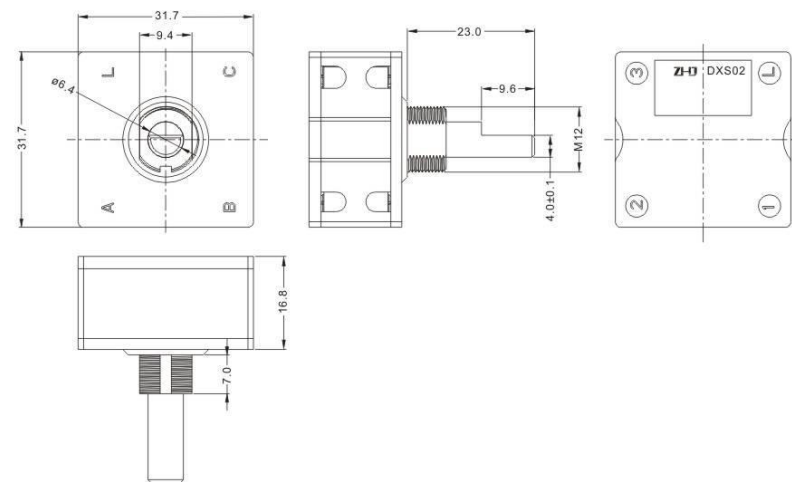
Function list 3				
NO.	0	1	2	3
0	OFF	L-1		
1	OFF	L-1	L-2	
2	OFF	L-1	L-2	L-3
3	OFF	L-1	L-1-2	L-3
4	OFF	L-1	L-2	L-2-3
5	OFF	L-1	L-1-2	L-1-3
6	OFF	L-1-2	L-1-3	
7	OFF	L-1-2	L-2-3	
8	OFF	L-1-2	L-1-3	L-2-3

SPECIFICATION:

- Single pole multi-position

RATINGS AND APPROVALS:

- 16A 250V ~ T125 1E4



Actuator angle option list (According to clients' request)

A		B		C		D		E	
F		G		H		I		J	
K		L		M		N		O	
P		Q							

Actuator options list (Please provide us the sizes of A, B and C)

	A	3.85	3.9	3.95	4.0	4.1	4.2	4.45	4.9			
	B	4.0	7.2	7.4	7.5	7.8	7.9	8.0	9.0	9.3	9.4	9.5
	C	8.0	11.0	13.35	13.5	13.6	14.05	14.5	14.7	14.9	15.0	15.2
		15.4	16.0	16.3	16.5	16.7	17.0					

Function list 1

NO.	CI	P	0	1	2	3
P1	SW1	L-A	OFF	L-B		
	SW2	OFF	OFF	L-2	L-3	
P2	SW1	L-A	OFF	L-C	L-A	
	SW2	OFF	OFF	L-1	L-2	L-3

Function list 2

NO.	CI	1	2	3
N1	SW1	L-A	L-B	
	SW2	L-1	L-2	L-3
N2	SW1	L-A	L-A-B	L-C
	SW2	L-1	L-2	L-2-3
N3	SW1	L-A	L-A-B	L-B-C
	SW2	L-1-2	L-1-3	
N4	SW1	L-A-B	L-B-C	
	SW2	L-1-2	L-1-3	L-2-3

Function list 3

NO.	CI	0	1	2	3	4	5	6
01	SW1	OFF	L-A					
	SW2	OFF	L-1	L-2				
	SW1	OFF	L-A	L-B	L-C			
02	SW2	OFF	L-1	L-1-2	L-3			
	SW1	OFF	L-A	L-B	L-A-B			
	SW2	OFF	L-1	L-1-2	L-1-3			
03	SW1	OFF	L-A-B	L-A-C				
	SW2	OFF	L-1-2	L-2-3				
	SW1	OFF	OFF	OFF	OFF	OFF	L-A	L-B
04	SW2	OFF	L-1	L-2	L-3	OFF	OFF	OFF
	SW2	OFF	L-1	L-2	L-3	OFF	OFF	OFF

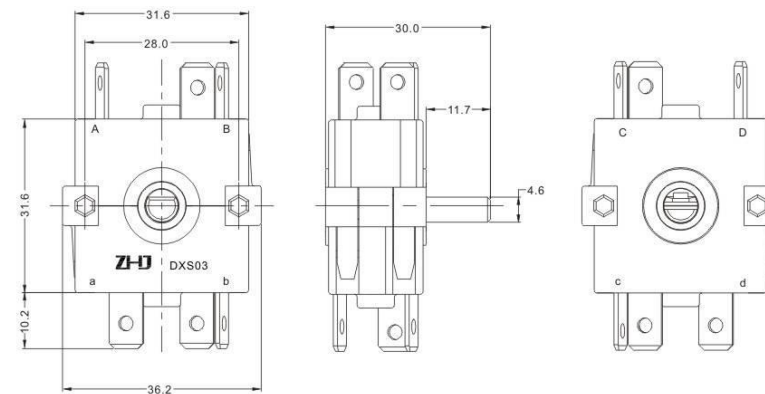


SPECIFICATION:

- Single pole multi-position
- push-in terminal
- 4.8x0.8 & 6.3x0.8 terminal option

RATINGS AND APPROVALS:

- 16(4)A 250V ~ T125 1E4



DXS03-A	X	X	X	X	X	X
Sereis	Plies	Shaft	Rotary angle	Shaft angle	Teminal	Function
	1 Monolayer 2 Double-deck	A None B C	1 30° 2 45° 3 90°	0 1 2 3 4	A B C	Attached List

Function options list

Output	Gear
Input	0 1
A a	●
B b	
C c	
D d	

A01

Output	Gear
Input	0 1 2
A a	●
B b	
C c	
D d	

A02

Output	Gear
Input	0 1 2
A a	●
B b	●
C c	
D d	

A03

Output	Gear
Input	0 1 2 3
A a	●
B b	
C c	
D d	

A04

Output	Gear
Input	0 1 2 3
A a	●
B b	●
C c	●
D d	

A05

Output	Gear
Input	0 1 2 3
A a	●
B b	●
C c	●
D d	●

A06

Output	Gear
Input	0 1 2 3 4
A a	●
B b	●
C c	●
D d	●

A07

Output	Gear
Input	0 1 2 3 4
A a	●
B b	●
C c	●
D d	●

A08

Output	Gear
Input	0 1 2 3 4
A a	●
B b	●
C c	●
D d	●

A09

Output	Gear
Input	0 1 2 3 4
A a	●
B b	●
C c	●
D d	●

A10

Output	Gear
Input	0 1 2 3 4
A a	●
B b	●
C c	●
D d	●

A11

Output	Gear
Input	0 1 2 3 4
A a	●
B b	●
C c	●
D d	●

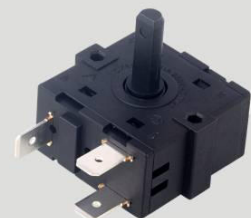
A12

Output	Gear
Input	0 1 2 3 4
A a	●
B b	●
C c	●
D d	●

A13

Output	Gear
Input	0 1 2 3 4
A a	●
B b	●
C c	●
D d	●

A14

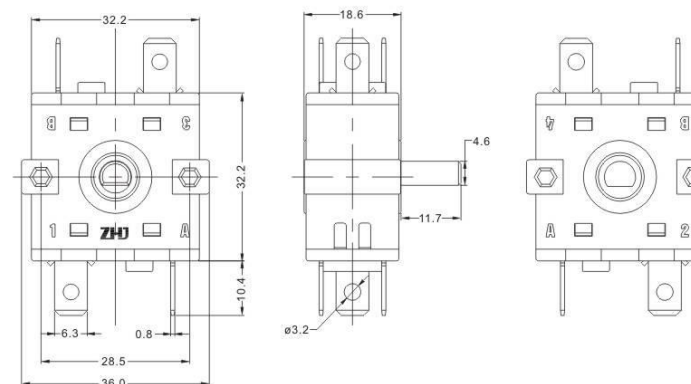


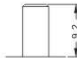

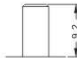











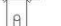

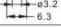

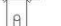

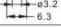

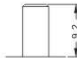






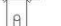

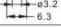

SPECIFICATION:

- Single pole, multi-position
- push-in terminal
- 4.8x0.8 & 6.3x0.8 terminal option


RATINGS AND APPROVALS:

- 16(4)A 250VAC T125 1E4
- 15RA 125/250VAC T105/T125 1E4
- 10R(6)A 125/250VAC T105/T125 1E4
- 13RA 125/250VAC T105/T125 1E4
- 6RA 125/250VAC T105/T125 1E4




DXS03-B	X	X	X	X	X	X																																									
Sereis	Plies	Shaft	Rotary angle	Shaft angle	Teminal	Function																																									
<table><tr><td>1</td><td>Mondlalyer</td></tr><tr><td>2</td><td>Double-deck</td></tr></table>	1	Mondlalyer	2	Double-deck	<table><tr><td>A</td><td>None</td></tr><tr><td>B</td><td></td></tr><tr><td>C</td><td></td></tr></table>	A	None	B		C		<table><tr><td>1</td><td>22.5°</td></tr><tr><td>2</td><td>25.7°</td></tr><tr><td>3</td><td>30°</td></tr><tr><td>4</td><td>36°</td></tr><tr><td>5</td><td>45°</td></tr><tr><td>6</td><td>60°</td></tr><tr><td>7</td><td>90°</td></tr></table>	1	22.5°	2	25.7°	3	30°	4	36°	5	45°	6	60°	7	90°	<table><tr><td>0</td><td></td></tr><tr><td>1</td><td></td></tr><tr><td>2</td><td></td></tr><tr><td>3</td><td></td></tr><tr><td>4</td><td></td></tr></table>	0		1		2		3		4		<table><tr><td>A</td><td></td></tr><tr><td>B</td><td></td></tr><tr><td>C</td><td></td></tr><tr><td>D</td><td></td></tr></table>	A		B		C		D		Attached Lis
1	Mondlalyer																																														
2	Double-deck																																														
A	None																																														
B																																															
C																																															
1	22.5°																																														
2	25.7°																																														
3	30°																																														
4	36°																																														
5	45°																																														
6	60°																																														
7	90°																																														
0																																															
1																																															
2																																															
3																																															
4																																															
A																																															
B																																															
C																																															
D																																															

DXS03-B Function options list




Output	Gear	
Input	0	1
A 1		●
2		
B 3		
4		

B01





Output	Gear		
Input	0	1	2
A 1		●	
2			●
B 3			
4			

B02





Output	Gear		
Input	0	1	2
A 1		●	●
2			●
B 3			
4			

B03


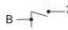
Output	Gear			
Input	0	1	2	3
A 1		●		
2			●	
B 3				●
4				

B04



Output	Gear			
Input	0	1	2	3
A 1		●		
2			●	
B 3			●	●
4				

B05



Output	Gear			
Input	0	1	2	3
A 1		●		
2		●	●	
B 3			●	●
4				

B06



Output	Gear			
Input	0	1	2	3
A 1		●		
2		●	●	
B 3		●	●	●
4				

B07



Output	Gear				
Input	0	1	2	3	4
A 1		●			
2			●		
B 3				●	
4					●

B08

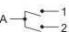
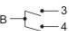
Output	Gear				
Input	0	1	2	3	4
A 1		●			
2		●	●		
B 3				●	
4					●

B09

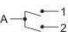

Output	Gear				
Input	0	1	2	3	4
A 1		●			
2			●		
B 3		●	●	●	
4					●

B10

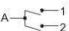
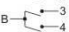
Output	Gear				
Input	0	1	2	3	4
A 1		●			
2			●		
B 3			●	●	
4				●	●

B11

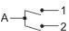
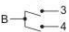
Output	Gear				
Input	0	1	2	3	4
A 1		●			
2			●		
B 3		●	●	●	
4				●	●

B12

Output	Gear				
Input	0	1	2	3	4
A 1		●			
2			●		
B 3		●	●	●	
4			●	●	●

B13

Output	Gear				
Input	0	1	2	3	4
A 1		●			
2		●	●		
B 3			●	●	
4		●	●	●	●

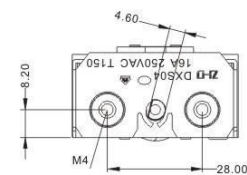
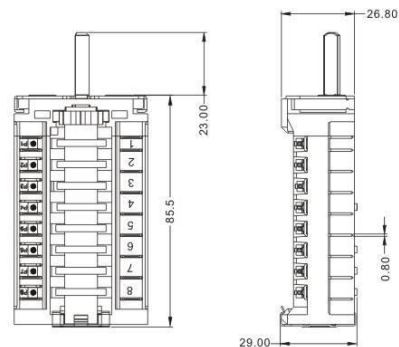
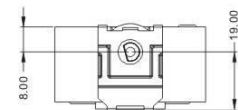
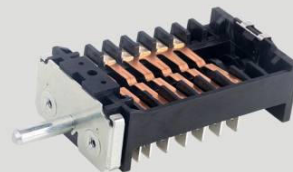
B14

SPECIFICATION:

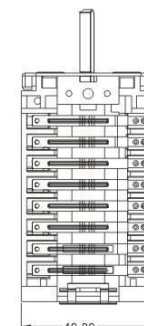
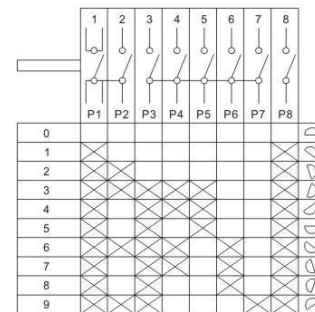
- Single pole, multi-position
- push-in terminal
- 4.8x0.8 & 6.3x0.8 terminal option

RATINGS AND APPROVALS:

- 16A 250VAC T125 1E4



产品功能图



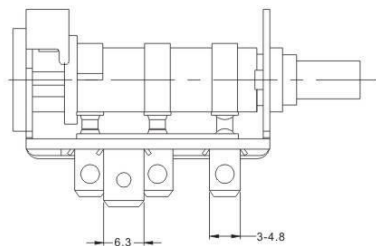


SPECIFICATION:

- Single pole, multi-position
- push-in terminal
- 4.8x0.8 & 6.3x0.8 terminal option

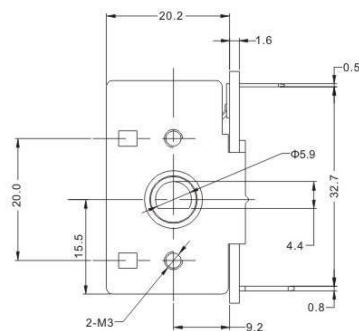
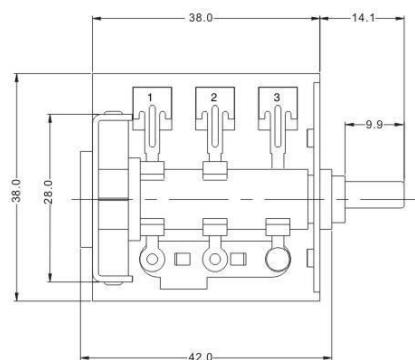
RATINGS AND APPROVALS:

- 16A 250VAC T125 1E4

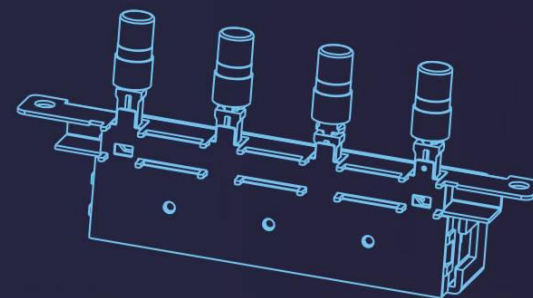


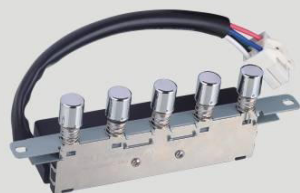
Output Input	Gear							
	1	2	3	4	5	6	7	8
3	ON		ON		ON		ON	
2	ON	ON				ON	ON	
1					ON	ON	ON	
Icon								

Stall angle 45°



琴键开关 <<< KEY BOARD SWITCH



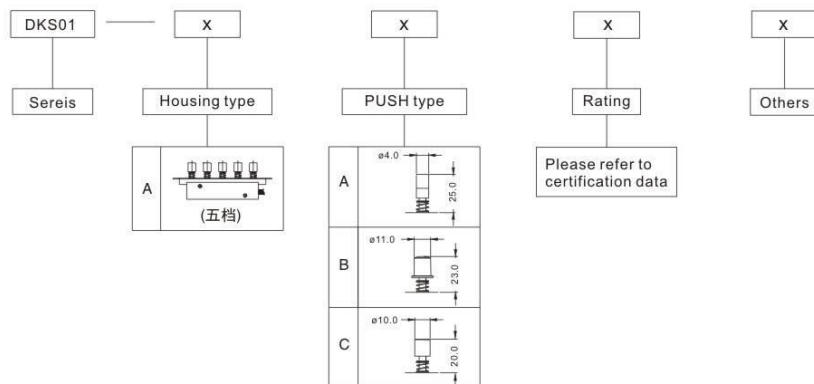
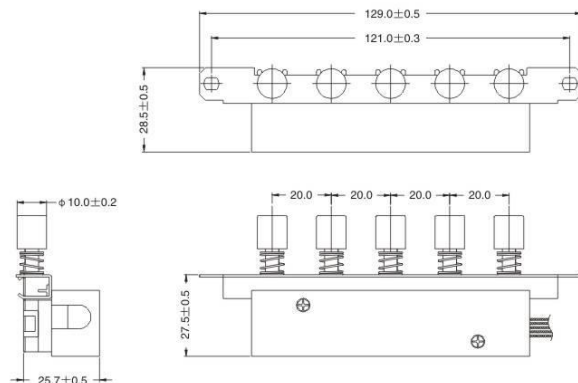


SPECIFICATION:

- Single pole, sing/double throw

RATINGS AND APPROVALS:

- 4A 250VAC T85 1E4



SPECIFICATION:

- Single pole, single/double throw

RATINGS AND APPROVALS:

- 4A 250VAC T85 1E4

