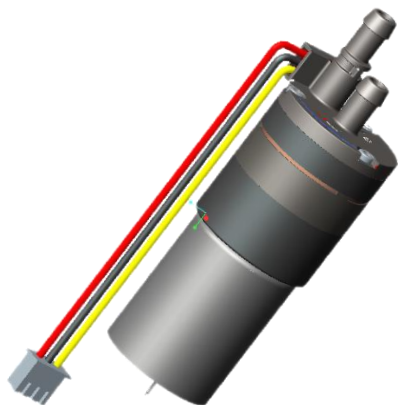


# 泵系列产品介绍

## Introduction of Pump



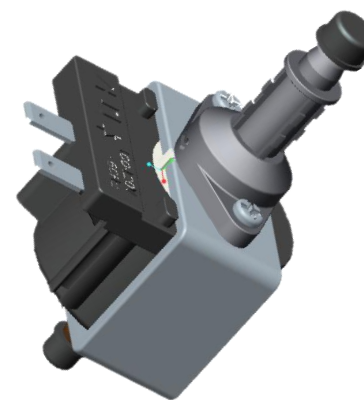
隔膜泵

Diaphragm Pump



无刷泵

Brushless Pump

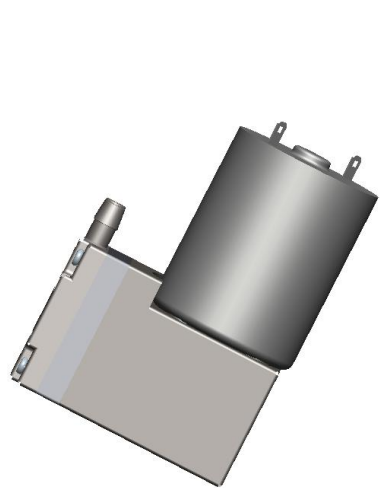


电磁泵

Electromagnetic pump

# 隔膜气泵系列

## Diaphragm Air Pump Series



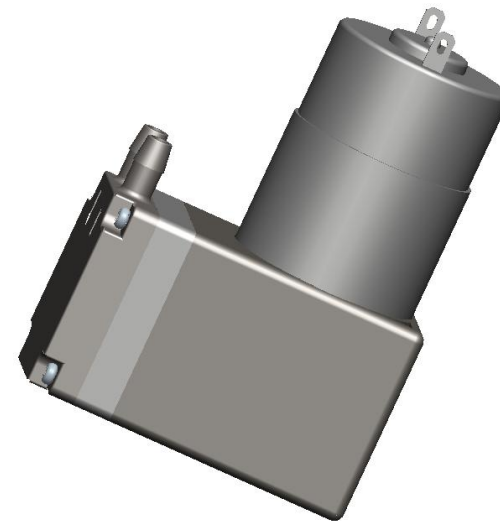
DWP01-A25



DWP01-A27

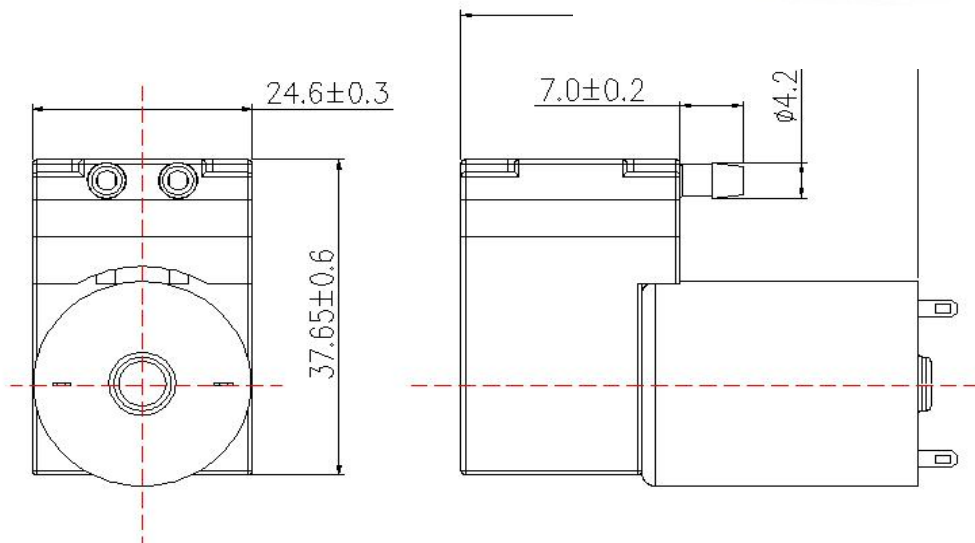
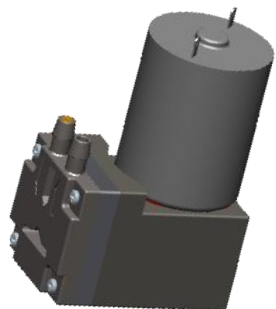


DWP01-A28



DWP01-A40

型号Model: DWP01-A25



## 基本规格参数 Specification

电压 Rated voltage	DC6V/12V
电流 Current	<600ma
真空 Vacuum	-60~-70Kpa
流量 Rate of flow	1-2L/min
流体介质 Fluid medium	常温空气 Air in ordinary temperatures
寿命 Working Life	> 1500 Hours
工作噪音 Noise	小于65dB距离1米 < 65dB within 1 meter range

## 功能特点

### Function and Characteristics

泵体积小，宝塔形进出嘴，安装牢固；

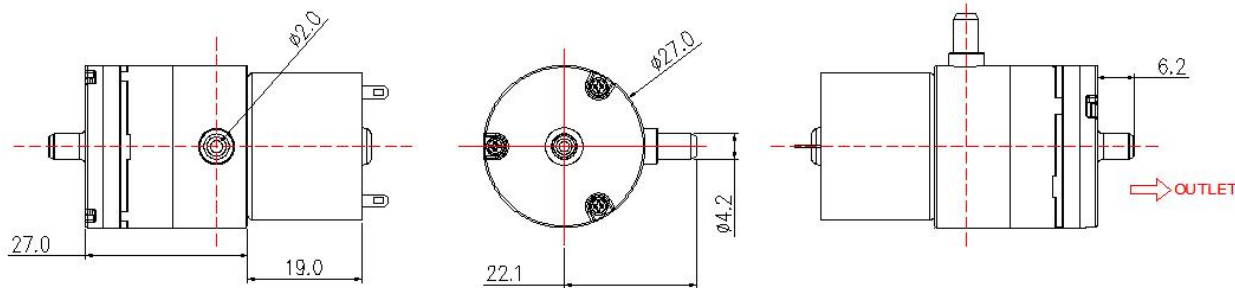
真空度高，流量稳定。

Small pump volume, Rib feature on the Inlet &Outlet,  
High vacuum, stable flow.

适用产品：真空破壁机，净食机（优食科技）

Application: Vacuum Blender, Food cleaning machine

型号Model: DWP01-A27



# 隔膜气泵Diaphragm Air Pump

## 基本规格参数 Specification

电压 Rated voltage	DC3.7V/5V
电流 Current	<700ma
真空 Vacuum	-50~-60kpa
流量 Rate of flow	2-4L/min
流体介质 Fluid medium	常温空气 Air in ordinary temperatures
寿命 Working Life	> 500 Hours
工作噪音 Noise	小于60dB距离1米 < 60dB within 1 meter range

## 功能特点 Function and Characteristics

柱状泵体，便于安装固定；噪音低，流量稳定。  
Cylindrical pump body, easy to install and fix; Low noise, stable flow.

适用产品：真空破壁机（苏泊尔）  
Application: Vacuum Blender(Supor)

型号Model: DWP01-A27-02



## 基本规格参数 Specification

电压 Rated voltage	DC5-24V
电流 Current	<500ma
真空/压力 Vacuum	-40~-50kpa 0.5-1.5Bar
流量 Rate of flow	1.0-2.0L/min
流体介质 Fluid medium	常温空气 Air in ordinary temperatures
寿命 Working Life	>100 Hours
工作噪音 Noise	小于50dB距离1米 < 50dB within 1 meter range

## 功能特点

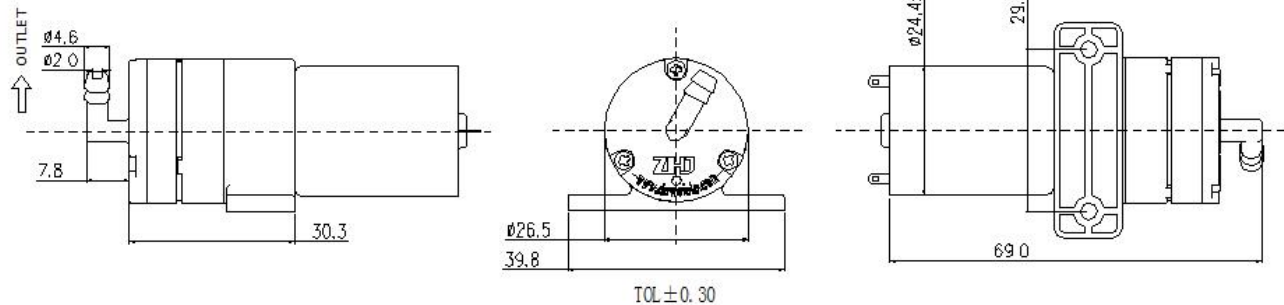
### Function and Characteristics

微型真空泵，体积小，安装空间占用少；工作噪音小；流量稳定。

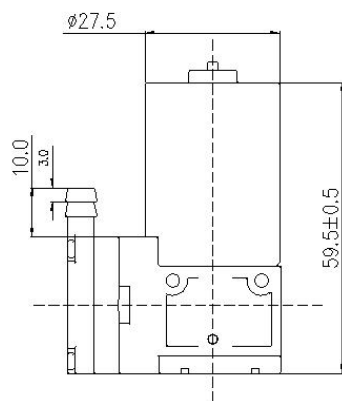
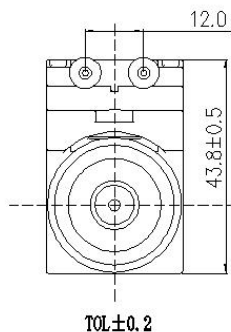
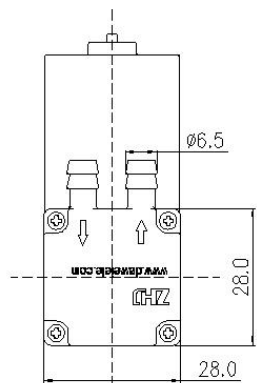
Miniature vacuum pump, small size, less installation space; low working noise; stable flow.

适用产品：咖啡机，果汁机，真空搅拌机

Application: Coffee maker, Juice machine, Vacuum Blendex machine



型号Model: DWP01-A28



# 隔膜气泵Diaphragm Air Pump

## 基本规格参数 Specification

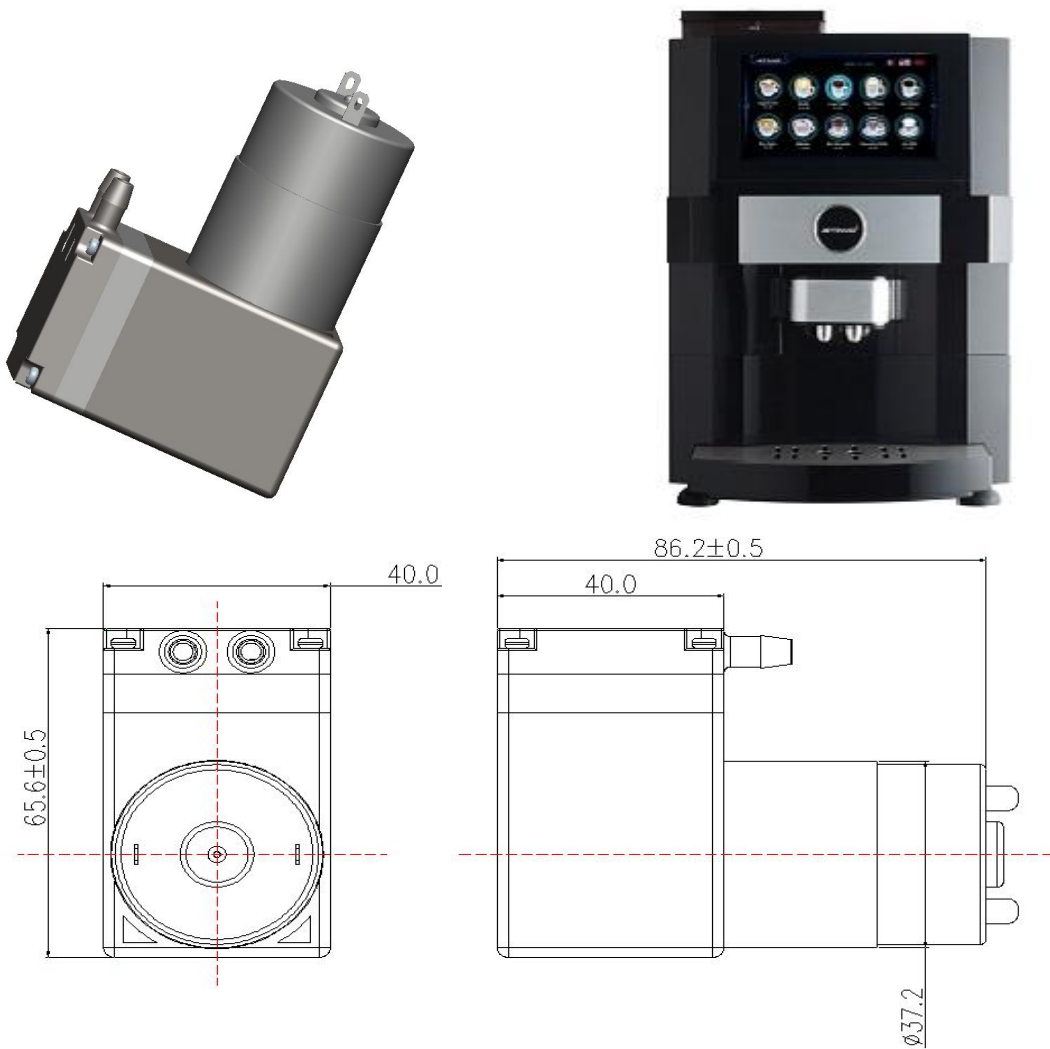
电压 Rated voltage	DC12V/18V
电流 Current	<500ma
真空 Vacuum	-65~-85kpa
流量 Rate of flow	3-7L/min
流体介质 Fluid medium	常温空气 Air in ordinary temperatures
寿命 Working Life	> 500 Hours
工作噪音 Noise	小于65dB距离1米 < 65dB within 1 meter range

## 功能特点

## Function and Characteristics

方形泵体，吸力强，真空度高，保压性能优。  
Square pump body, strong suction, high vacuum, excellent pressure retention performance.  
适用产品：真空破壁机（美的）  
Application: Vacuum Blender (Midea)

型号Model: DWP01-A40



# 隔膜气泵Diaphragm Air Pump

## 基本规格参数 Specification

电压 Rated voltage	DC12V/24V
电流 Current	<700ma
真空 Vacuum	-70~-85kpa
流量 Rate of flow	9-12L/min
流体介质 Fluid medium	常温空气 Air in ordinary temperatures
寿命 Working Life	> 3000 Hours
工作噪音 Noise	小于70dB距离1米 < 70dB within 1 meter range

## 功能特点

## Function and Characteristics

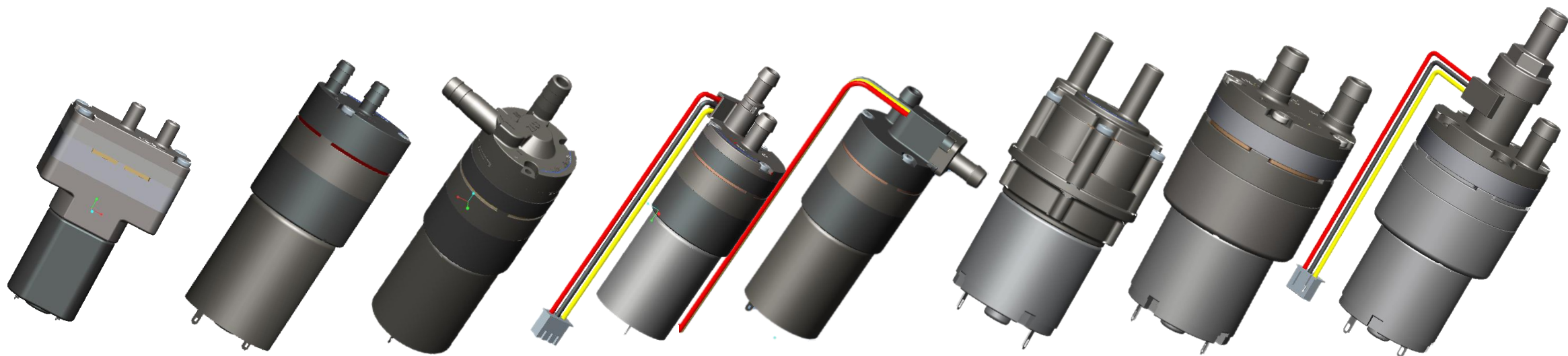
方形泵体，吸力强，真空度和流量极高，保压性能优。  
Square pump body, strong suction, high vacuum and flow, excellent pressure retention performance.

适用产品：咖啡机  
Application: Coffee maker



# 隔膜水泵系列

## Diaphragm Water Pump Series



B12水泵

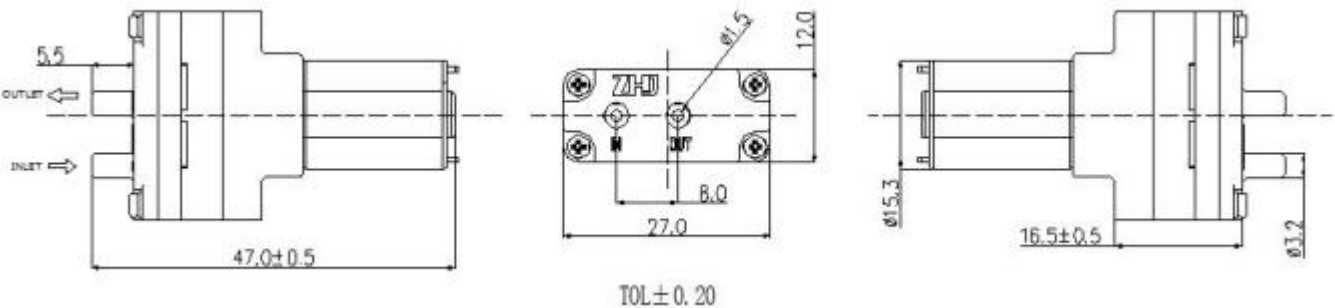
B27水泵

B27流量泵

B40水泵



型号Model: DWP01-B12



**基本规格参数 Specification**

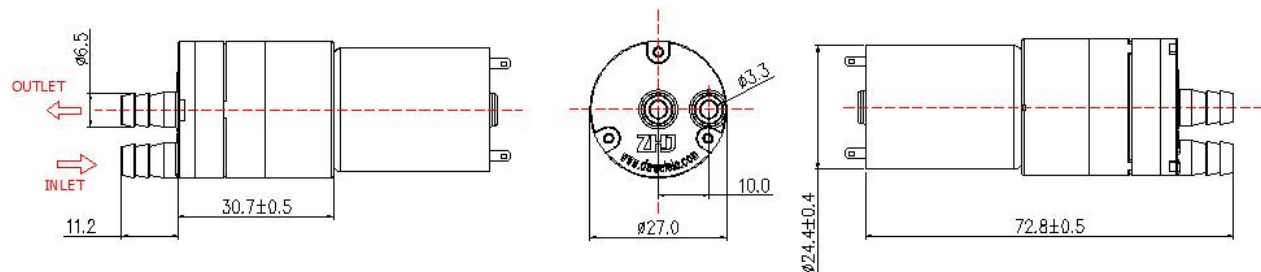
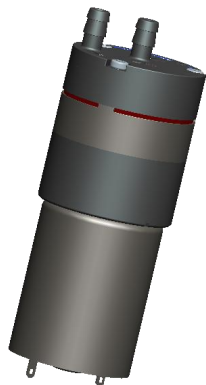
电压 Rated voltage	DC 3-5V
电流 Current	<500ma
真空 Vacuum	-10~-30kpa
流量 Rate of flow	50-150ml/min
流体介质 Fluid medium	常温纯净水 Pure water
寿命 Working Life	>100 Hours
工作噪音 Noise	小于50dB距离1米 < 50dB within 1 meter range

**功能特点  
Function and Characteristics**

微型真空泵，体积小，安装空间占用少；工作噪音小；流量稳定。  
Miniature vacuum pump, small size, less installation space; low working noise; stable flow.

适用产品：蒸汽烤箱 蒸汽拖把  
Application: Steam oven, steam mop

型号Model: DWP01-B27-01



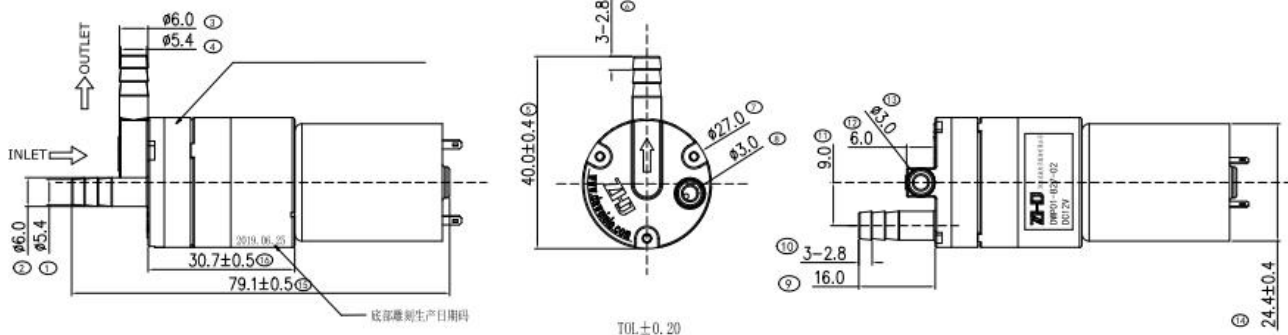
## 基本规格参数 Specification

电压 Rated voltage	DC12~24V
电流 Current	100~300ma
真空/压力 Vacuum	< -0.2Ba/1.8-3.5Bar
流量 Rate of flow	0.3~1.2L/min
流体温度 Fluid temperature	0-95℃
寿命 Working Life	> 500 Hours
工作噪音 Noise	小于50dB距离1米 < 50dB within 1 meter range

## 功能特点 Function and Characteristics

- 1.功率小2~5W
  - 2.工作噪音低40~45dB
  - 3.有自吸能力，吸程可达3~4米
  - 4.符合食品接触/FDA要求，可用于饮用水
  - 5.工作压力大，可在较高反压下工作，压力流量稳定
- 适用产品：饮水机，果汁机，豆浆机
- 1.Power is 2~5W
  - 2.Noise between 40~45db
  - 3.Self-suction and can suck up to 3~4 meters
  - 4.Meets food contact /FDA requirements and can be used in drinking water
  - 5.High working pressure, can work under high back pressure, stable pressure flow
- Application: water dispenser, juicer, soybean machine

型号Model: DWP01-B27-02



## 基本规格参数 Specification

电压 Rated voltage	DC12~24V
电流 Current	100~300ma
真空/压力 Vacuum	< -0.2Ba/1.8-3.5Bar
流量 Rate of flow	0.3~1.2L/min
流体温度 Fluid temperature	0-95°C
寿命 Working Life	> 500 Hours
工作噪音 Noise	小于50dB距离1米 < 50dB within 1 meter range

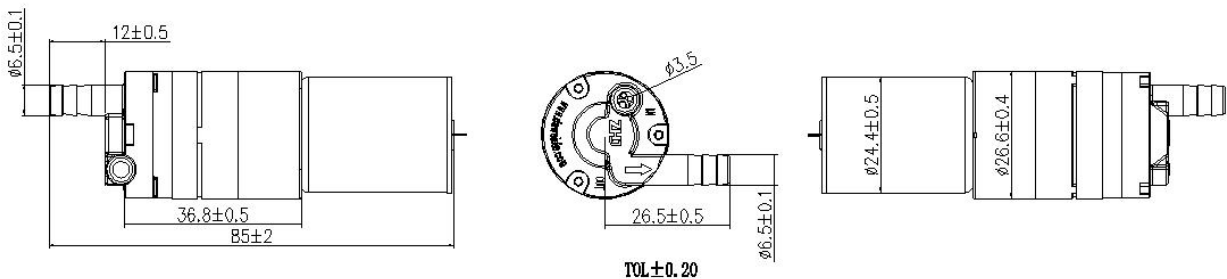
## 功能特点

## Function and Characteristics

- 1.功率小2~5W
  - 2.工作噪音低40~45dB
  - 3.有自吸能力，吸程可达3~4米
  - 4.符合食品接触/FDA要求，可用于饮用水
  - 5.工作压力大，可在较高反压下工作，压力流量稳定
- 适用产品：饮水机，果汁机，豆浆机（九阳）

- 1.Power is 2~5W
  - 2.Noise between 40~45db
  - 3.Self-suction and can suck up to 3~4 meters
  - 4.Meets food contact /FDA requirements and can be used in drinking water
  - 5.High working pressure, can work under high back pressure, stable pressure flow
- Application: water dispenser, juicer, soybean machine

型号Model: DWP01-B27-02



## 基本规格参数 Specification

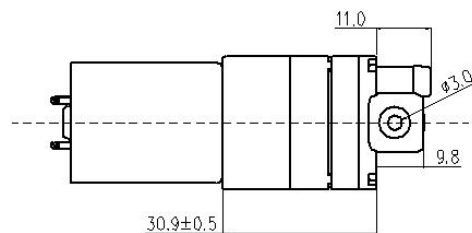
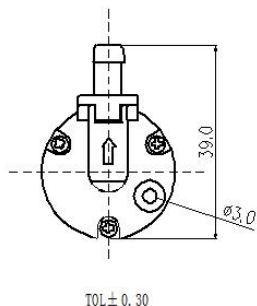
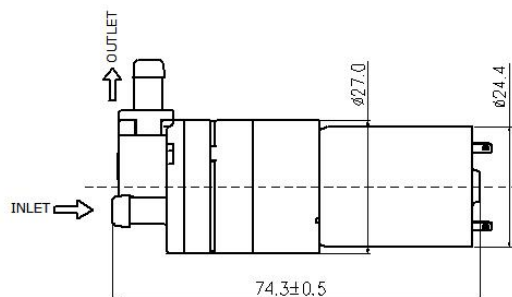
电压 Rated voltage	DC12~24V
电流 Current	100~300ma
真空/压力 Vacuum	< -0.2Ba/1.8-3.5Bar
流量 Rate of flow	0.3~1.2L/min
流体温度 Fluid temperature	0-95℃
寿命 Working Life	> 500 Hours
工作噪音 Noise	小于50dB距离1米 < 50dB within 1 meter range

## 功能特点 Function and Characteristics

- 1.功率小2~5W
  - 2.工作噪音低40~45dB
  3. 有自吸能力，吸程可达3~4米
  - 4.符合食品接触/FDA要求，可用于饮用水
  - 5.工作压力大，可在较高反压下工作，压力流量稳定
- 适用产品：饮水机，果汁机，豆浆机（九阳）

- 1.Power is 2~5W
  - 2.Noise between 40~45db
  - 3.Self-suction and can suck up to 3~4 meters
  - 4.Meets food contact /FDA requirements and can be used in drinking water
  - 5.High working pressure, can work under high back pressure, stable pressure flow
- Application: water dispenser, juicer, soybean machine

型号Model: DWP01-B27-03



# 流量水泵 Flowmeter Pump

## 基本规格参数 Specification

电压 Rated voltage	DC12~24V
电流 Current	100~300ma
压力 Pressure	1.0-3.5Bar
真空 Vacuum	< -0.2Ba
流量 Rate of flow	0.5~0.9L/min
流体温度 Fluid temperature	0-95℃
寿命 Working Life	> 500 Hours
工作噪音 Noise	小于50dB距离1米 < 50dB within 1 meter range

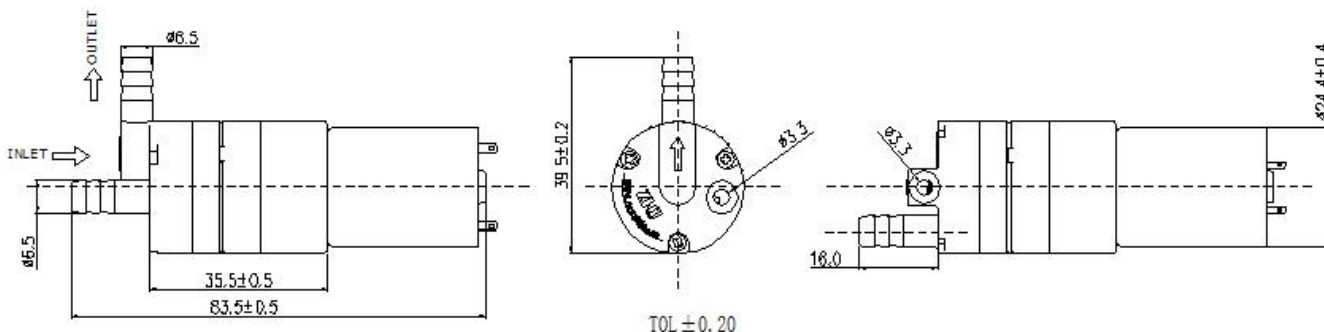
## 功能特点

## Function and Characteristics

- 1.功率小2~5W
  - 2.工作噪音低40~45dB
  - 3.有自吸能力，吸程可达3~4米
  - 4.符合食品接触/FDA要求，可用于饮用水
  - 5.工作压力大，可在较高反压下工作，压力流量稳定
- 带叶轮霍尔流量检测功能，信号比1: 20，精度约±5%  
适用产品：饮水机，果汁机，豆浆机

- 1.Power is 2~5W
  - 2.Noise between 40~45db
  - 3.self-suction and can suck up to 3~4 meters.
  - 4.Meets food contact /FDA requirements and can be used in drinking water.
  - 5.High working pressure, can work under high back pressure, stable pressure flow.With grating flow detection function, accurate flow control, the accuracy of about ±5%
- Application: water dispenser, juicer, soybean machine

型号Model: DWP01-B27-04



## 基本规格参数 Specification

电压 Rated voltage	DC12~24V
电流 Current	100~300ma
压力 Pressure	1.0-3.5Bar
真空 Vacuum	< -0.2Ba
流量 Rate of flow	0.5~0.9L/min
流体温度 Fluid temperature	0-95°C
寿命 Working Life	> 500 Hours
工作噪音 Noise	小于50dB距离1米 < 50dB within 1 meter range

## 功能特点 Function and Characteristics

- 1.功率小2~5W
- 2.工作噪音低40~45dB
- 3.有自吸能力，吸程可达3~4米
- 4.符合食品接触/FDA要求，可用于饮用水
- 5.可装于液面之下水泵不工作时出水口不会自然渗水  
止回高度1.0-1.5米

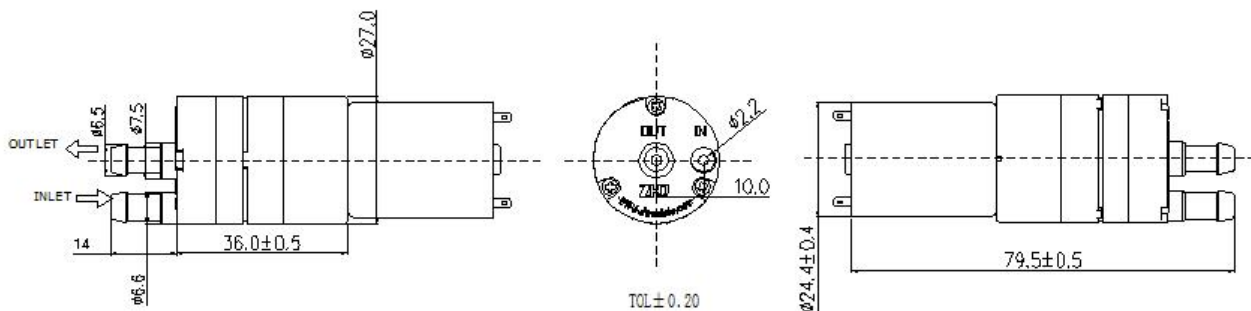
适用产品：饮水机，果汁机，豆浆机

- 1.Power is 2~5W
- 2.Noise between 40~45db
- 3.self-suction and can suck up to 3~4 meters.
- 4.Meets food contact /FDA requirements and can be used in drinking water.
- 5.Can be installed below the liquid level, the water outlet will not seep naturally when the pump is not working  
Height 1.0-1.5 meters

Application: water dispenser, juicer, soybean machine



型号Model: DWP01-B27-04



## 基本规格参数 Specification

电压 Rated voltage	DC12~24V
电流 Current	100~300ma
压力 Pressure	1.0-3.5Bar
真空 Vacuum	< -0.2Ba
流量 Rate of flow	0.5~0.9L/min
流体温度 Fluid temperature	0-95°C
寿命 Working Life	> 500 Hours
工作噪音 Noise	小于50dB距离1米 < 50dB within 1 meter range

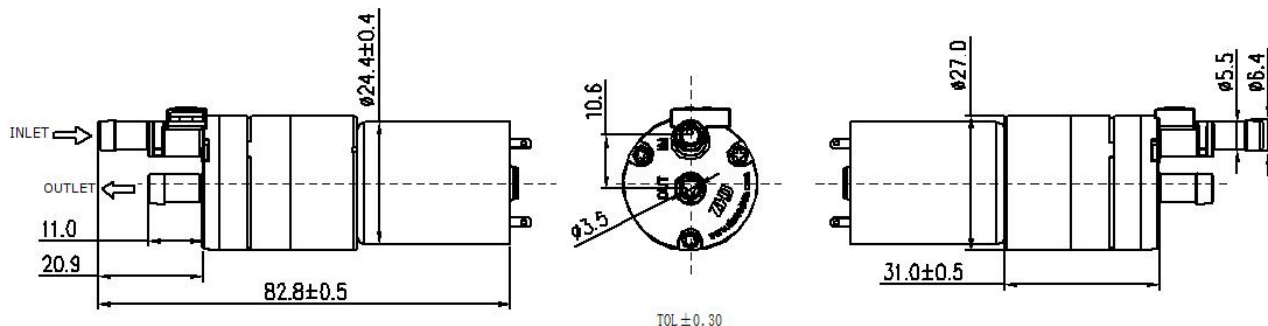
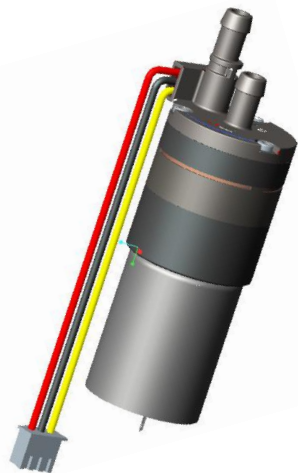
## 功能特点 Function and Characteristics

- 1.功率小2~5W
- 2.工作噪音低40~45dB
- 3.有自吸能力，吸程可达3~4米
- 4.符合食品接触/FDA要求，可用于饮用水
- 5.可装于液面之下水泵不工作时出水口不会自然渗水  
止回高度1.0-1.5米

适用产品：饮水机，果汁机，豆浆机

- 1.Power is 2~5W
  - 2.Noise between 40~45db
  - 3.self-suction and can suck up to 3~4 meters.
  - 4.Meets food contact /FDA requirements and can be used in drinking water.
  - 5.Can be installed below the liquid level, the water outlet will not seep naturally when the pump is not working  
Height 1.0-1.5 meters
- Application: water dispenser, juicer, soybean machine

型号Model: DWP01-B27-05



# 流量水泵 Flowmeter Pump

## 基本规格参数 Specification

电压 Rated voltage	DC12~24V
电流 Current	100~300ma
压力 Pressure	1.0~3.5Bar
真空 Vacuum	< -0.2Ba
流量 Rate of flow	0.5~0.9L/min
流体温度 Fluid temperature	0-95°C
寿命 Working Life	> 500 Hours
工作噪音 Noise	小于50dB距离1米 < 50dB within 1 meter range

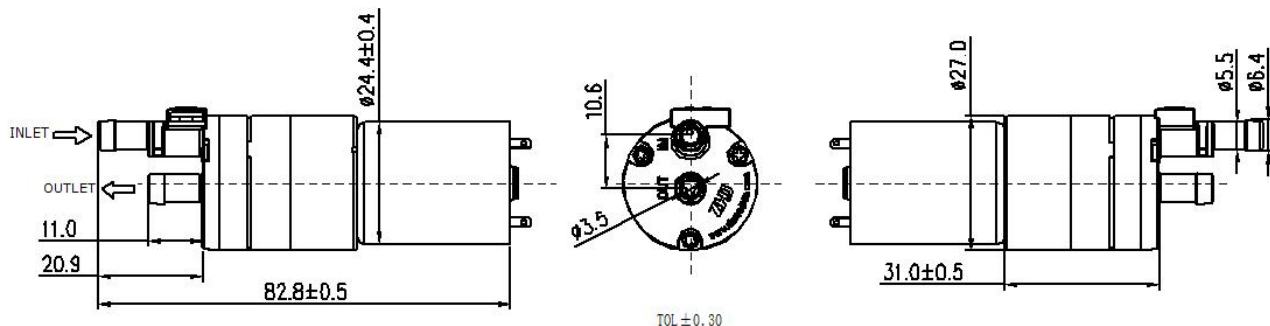
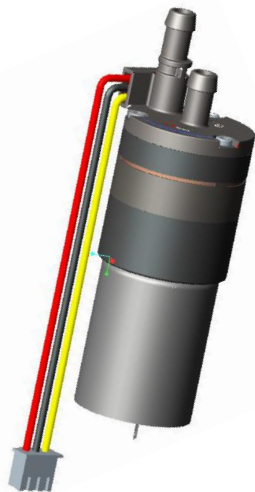
## 功能特点

## Function and Characteristics

- 1.功率小2~5W
  - 2.工作噪音低40~45dB
  - 3.有自吸能力，吸程可达3~4米
  - 4.符合食品接触/FDA要求，可用于饮用水
  - 5.可装于液面之下水泵不工作时出水口不会自然渗水
- 止回高度1.0-1.5米  
适用产品：饮水机，果汁机，豆浆机

- 1.Power is 2~5W
  - 2.Noise between 40~45db
  - 3.self-suction and can suck up to 3~4 meters.
  - 4.Meets food contact /FDA requirements and can be used in drinking water.
  - 5.Can be installed below the liquid level, the water outlet will not seep naturally when the pump is not working
- Height 1.0-1.5 meters  
Application: water dispenser, juicer, soybean machine

型号Model: DWP01-B27-05



# 流量水泵 Flowmeter Pump

## 基本规格参数 Specification

电压 Rated voltage	DC12~24V
电流 Current	100~300ma
压力 Pressure	1.0~3.5Bar
真空 Vacuum	< -0.2Ba
流量 Rate of flow	0.5~0.9L/min
流体温度 Fluid temperature	0-95°C
寿命 Working Life	> 500 Hours
工作噪音 Noise	小于50dB距离1米 < 50dB within 1 meter range

## 功能特点

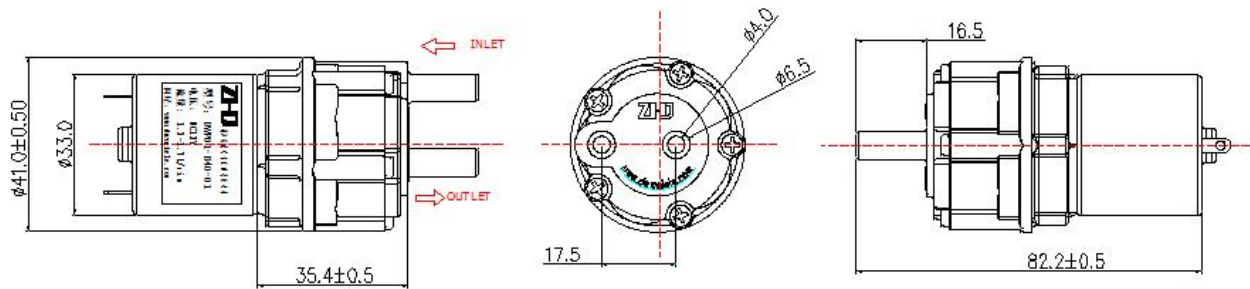
## Function and Characteristics

- 1.功率小2~5W
- 2.工作噪音低40~45dB
- 3.有自吸能力，吸程可达3~4米
- 4.符合食品接触/FDA要求，可用于饮用水
- 5.可装于液面之下水泵不工作时出水口不会自然渗水  
止回高度1.0-1.5米

适用产品：饮水机，果汁机，豆浆机

- 1.Power is 2~5W
  - 2.Noise between 40~45db
  - 3.self-suction and can suck up to 3~4 meters.
  - 4.Meets food contact /FDA requirements and can be used in drinking water.
  - 5.Can be installed below the liquid level, the water outlet will not seep naturally when the pump is not working  
Height 1.0-1.5 meters
- Application: water dispenser, juicer, soybean machine

型号Model: DWP01-B40



# 隔膜水泵Diaphragm Water Pump

## 基本规格参数 Specification

电压 Rated voltage	DC12~24V
电流 Current	200~500ma
压力 Pressure	1.5-3.5Bar
真空 Vacuum	< -0.3Ba
流量 Rate of flow	1.0~2.0L/min
流体温度 Fluid temperature	0-95℃
寿命 Working Life	> 500 Hours
工作噪音 Noise	小于50dB距离1米 < 50dB within 1 meter range

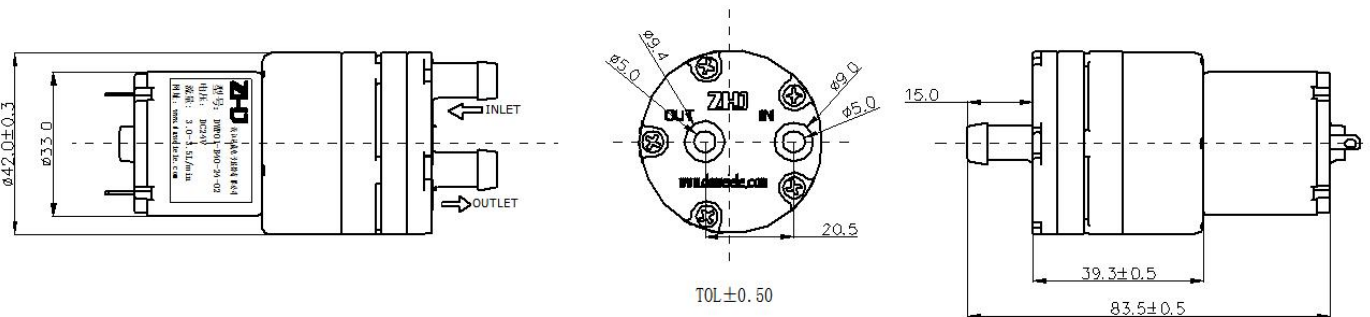
## 功能特点

## Function and Characteristics

- 1.功率3~8W
  - 2.工作噪音低40~45dB
  - 3.有自吸能力, 吸程可达3~4米
  - 4.符合食品接触/FDA要求, 可用于饮用水
  - 5.工作压力大, 可在较高反压下工作, 压力流量稳定
- 适用产品: 饮水机, 茶吧机, 功夫茶具

- 1.Power is 3~8W
  - 2.Noise between 40~45db.
  - 3.self-suction and can suck up to 3~4 meters.
  - 4.Meets food contact /FDA requirements and can be used in drinking water.
  - 5.High working pressure, can work under high back pressure, stable pressure flow.
- Applicaion: water dispenser, tea bar machine, kungfu tea set.

型号Model: DWP01-B40-02



**基本规格参数 Specification**

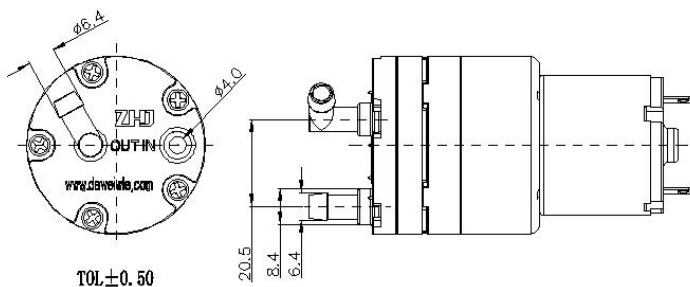
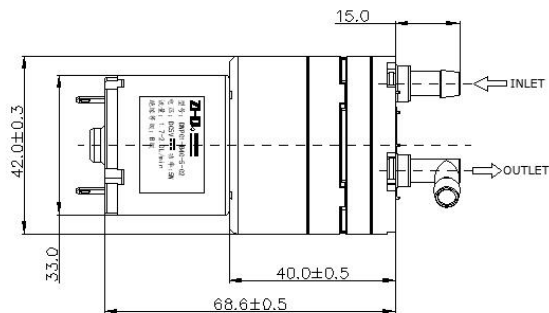
电压 Rated voltage	DC12~24V
电流 Current	200~500ma
压力 Pressure	1.5-3.5Bar
真空 Vacuum	< -0.3Ba
流量 Rate of flow	2.0~3.5L/min
流体温度 Fluid temperature	0-95℃
寿命 Working Life	> 500 Hours
工作噪音 Noise	小于55dB距离1米 < 50dB within 1 meter range

**功能特点  
Function and Characteristics**

- 1.功率5-15W
  - 2.工作噪音低40~55dB
  - 3. 有自吸能力，吸程可达3~4米
  - 4.符合食品接触/FDA要求，可用于饮用水
  - 5.工作压力大，可在较高反压下工作，压力流量稳定
- 适用产品：饮水机，茶吧机，功夫茶具
- 1.Power is 5-15W
  - 2.Noise between40~55db.
  - 3.self-suction and can suck up to 3~4 meters.
  - 4.Meets food contact /FDA requirements and can be used in drinking water.
  - 5.High working pressure, can work under high back pressure, stable pressure flow.
- Applicaion: water dispenser, tea bar machine, kungfu tea set.



型号Model: DWP01-B40-02



# 隔膜水泵Diaphragm Water Pump

## 基本规格参数 Specification

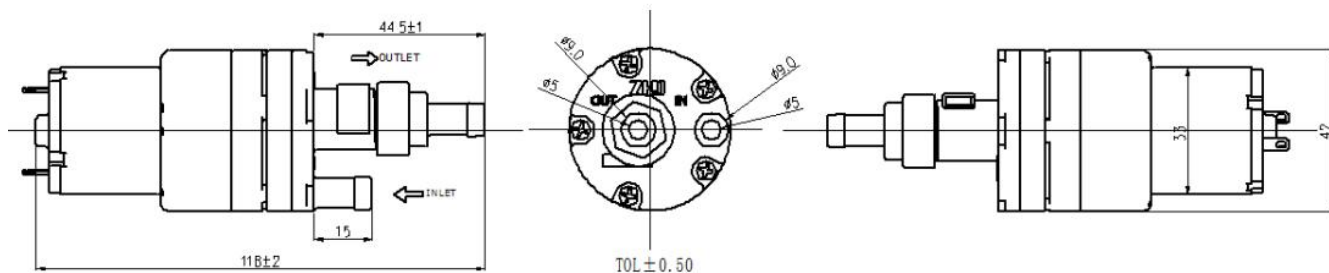
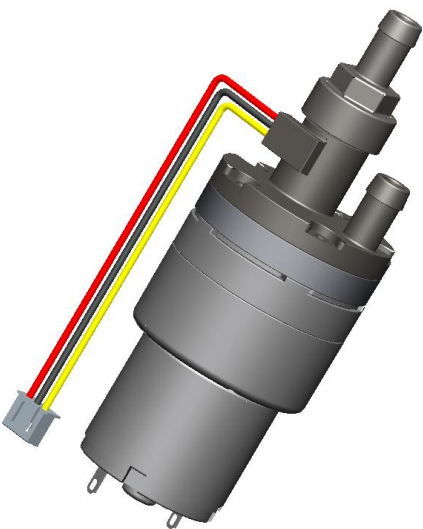
电压 Rated voltage	DC5~24V
电流 Current	200~500ma
压力 Pressure	1.5-3.5Bar
真空 Vacuum	< -0.3Ba
流量 Rate of flow	2.0~3.5L/min
流体温度 Fluid temperature	0-95℃
寿命 Working Life	> 500 Hours
工作噪音 Noise	小于55dB距离1米 < 50dB within 1 meter range

## 功能特点 Function and Characteristics

- 1.功率5-15W
  - 2.工作噪音低40~55dB
  3. 有自吸能力，吸程可达3~4米
  - 4.符合食品接触/FDA要求，可用于饮用水
  - 5.工作压力大，可在较高反压下工作，压力流量稳定
- 适用产品：饮水机，茶吧机，功夫茶具
- 1.Power is 5-15W
  - 2.Noise between 40~55db.
  - 3.self-suction and can suck up to 3~4 meters.
  - 4.Meets food contact /FDA requirements and can be used in drinking water.
  - 5.High working pressure, can work under high back pressure, stable pressure flow.
- Applicaion: water dispenser, tea bar machine, kungfu tea set.



型号Model: DWP01-B40-02



# 隔膜水泵Diaphragm Water Pump

## 基本规格参数 Specification

电压 Rated voltage	DC12~24V
电流 Current	200~500ma
压力 Pressure	1.5-3.5Bar
真空 Vacuum	< -0.3Ba
流量 Rate of flow	2.0~3.5L/min
流体温度 Fluid temperature	0-95℃
寿命 Working Life	> 500 Hours
工作噪音 Noise	小于55dB距离1米 < 50dB within 1 meter range

## 功能特点

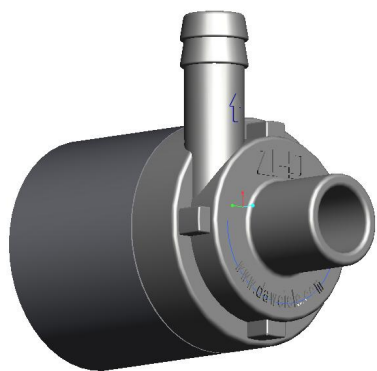
## Function and Characteristics

- 1.功率5-15W
  - 2.工作噪音低40~55dB
  3. 有自吸能力，吸程可达3~4米
  - 4.符合食品接触/FDA要求，可用于饮用水
  - 5.工作压力大，可在较高反压下工作，压力流量稳定
- 适用产品：饮水机，茶吧机，功夫茶具

- 1.Power is 5-15W
  - 2.Noise between 40~55db.
  - 3.self-suction and can suck up to 3~4 meters.
  - 4.Meets food contact /FDA requirements and can be used in drinking water.
  - 5.High working pressure, can work under high back pressure, stable pressure flow.
- Applicaion: water dispenser, tea bar machine, kungfu tea set.

# 无刷水泵系列

## Brushless Pump Series



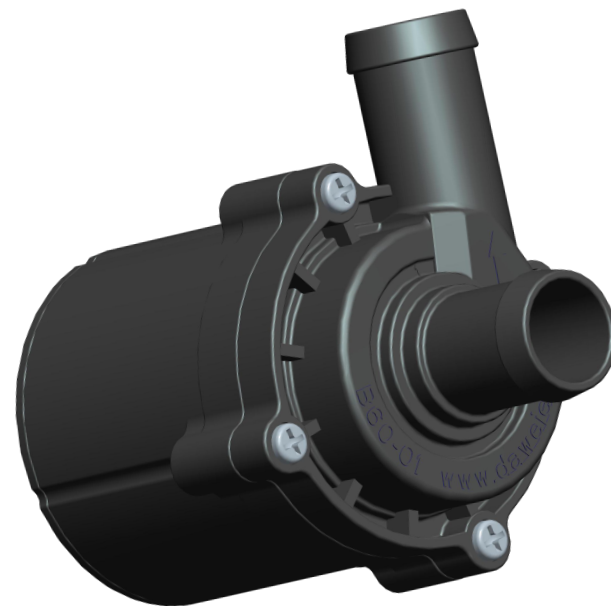
**B26无刷水泵**



**B40无刷水泵**

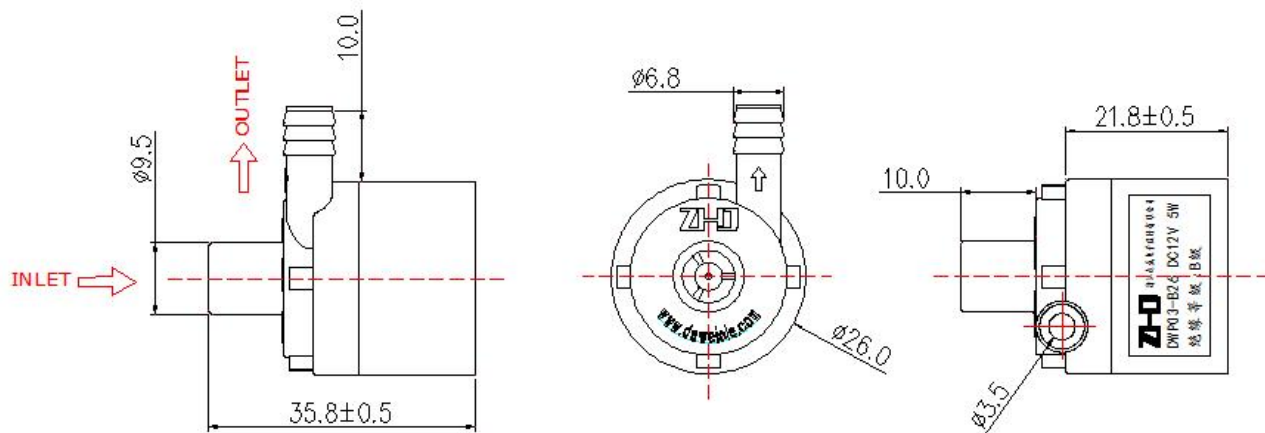


**B50无刷水泵**



**B60无刷水泵**

型号Model: DWP03-B26-01



# 无刷水泵Brushless Pump

## 基本规格参数 Specification

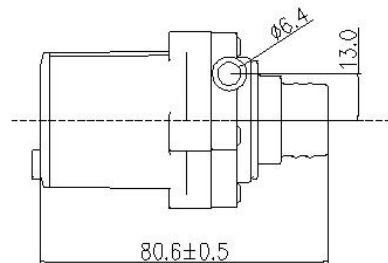
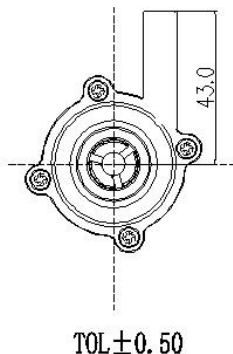
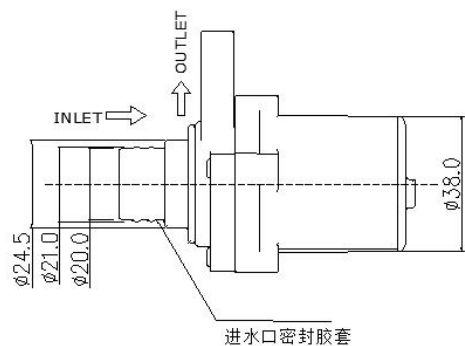
电压 Rated voltage	DC5V/12V
电流 Current	<450ma
压力 Pressure	1.0-2.5M
流量 Rate of flow	1.0-2.0L/min
流体温度 Fluid temperature	0-95℃
寿命 Working Life	> 2000 Hours
工作噪音 Noise	小于40dB距离1米 < 40dB within 1 meter range

## 功能特点

## Function and Characteristics

泵体为单级无刷泵无自吸功能  
使用无刷电机驱动使用寿命长，工作噪音小，可潜水使用，符合食品级要求  
The pump body is a single stage brushless pump without self-priming function.  
The use of brushless motor drive long service life, low working noise, can be used for diving, in line with the food grade requirements  
适用产品：饮水机，医疗设备，加湿器  
Application: water dispenser, Armarium, Humidifier

型号Model: DWP03-B40-01



# 无刷水泵Brushless Pump

## 基本规格参数 Specification

电压 Rated voltage	DC12V/24V
电流 Current	<1000ma
压力 Pressure	1.0-10M
流量 Rate of flow	5-8L/min
流体温度 Fluid temperature	0-95℃
寿命 Working Life	> 5000 Hours
工作噪音 Noise	小于45dB距离1米 < 45dB within 1 meter range

## 功能特点

## Function and Characteristics

泵体为单级无刷泵无自吸功能  
使用无刷电机驱动使用寿命长，工作噪音小，可潜水使用，符合食品级要求

- 1.额定电压DC12-24V
- 2.额定功率8-10W
- 3.出水扬程3-4米
- 4.单泵工作噪音≤35dB
- 5.使用寿命≥5000小时
- 6.三相无感驱动系统（可外置）
- 7.工作水温0-100℃,PCB板和线圈组件密封胶处理防水防潮
- 8.工作模式：间断工作，常温可连续工作,可订制保护功能

型号Model: DWP03-B50-01



# 无刷水泵Brushless Pump

## 基本规格参数 Specification

电压 Rated voltage	DC12V, 正常工作电压DC8-20V
功率 Power	50W 最大流量时
最大扬程 Maximum lift	12~16m
流量 Rate of flow	20~30L/min
流体温度 Fluid temperature	0-55℃
寿命 Working Life	> 10000 Hours
工作噪音 Noise	≤45dB

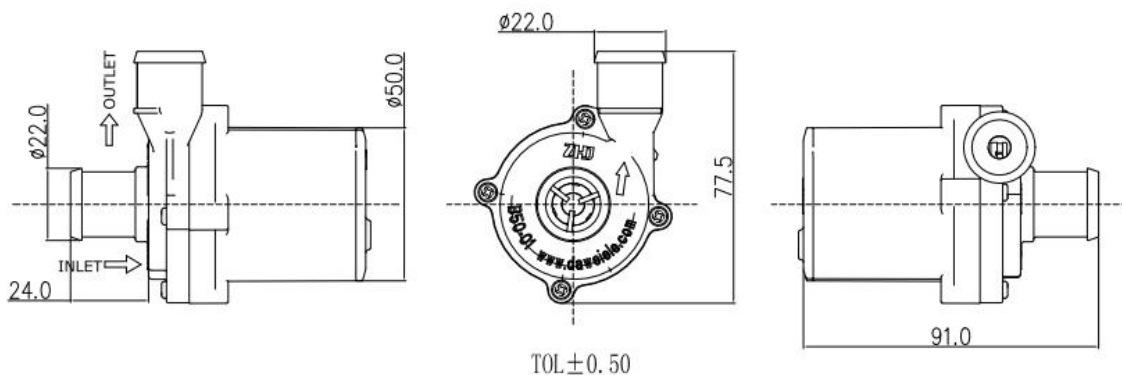
## 功能特点

## Function and Characteristics

可以按需定制以下功能:

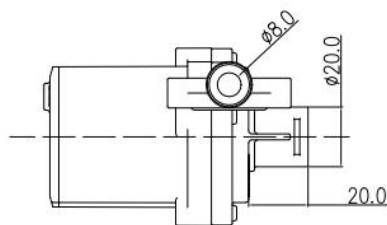
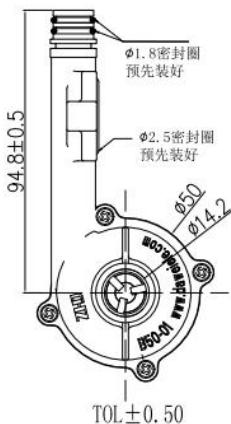
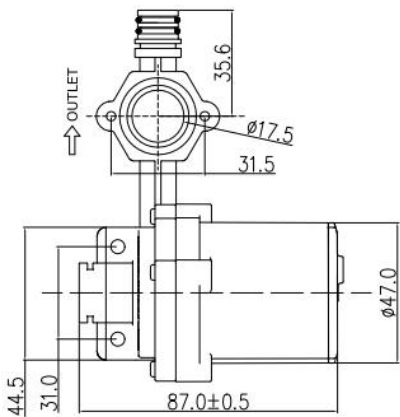
The following features can be customized on demand:

1. 空抽保护 Empty pumping protection
2. 过压保护 Over-voltage protection
3. 堵转保护 Blocking protection
4. 调速功能 Blocking protection





型号Model: DWP03-B50-02



# 无刷水泵Brushless Pump

## 基本规格参数 Specification

电压 Rated voltage	DC24V, 正常工作电压DC16-32V
功率 Power	35W 最大流量时
最大扬程 Maximum lift	10~14m
流量 Rate of flow	10~15L/min
流体温度 Fluid temperature	0-55℃
寿命 Working Life	> 10000 Hours
工作噪音 Noise	≤45dB

## 功能特点

## Function and Characteristics

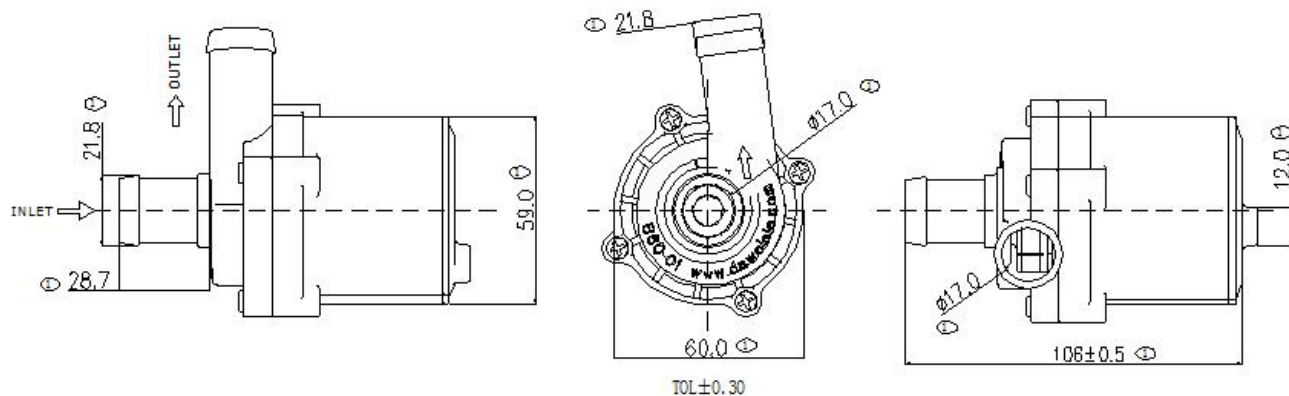
可以按需定制以下功能:

The following features can be customized on demand:

1. 空抽保护 Empty pumping protection
2. 过压保护 Over-voltage protection
3. 堵转保护 Blocking protection
4. 调速功能 Blocking protection



型号Model: DWP03-B60



# 无刷水泵Brushless Pump

## 基本规格参数 Specification

电压 Rated voltage	DC12-24V
功率 Power	<60W
压力 Pressure	0.5~1.0Bar
流量 Rate of flow	40~60L/min
流体温度 Fluid temperature	0-55℃
寿命 Working Life	> 10000 Hours
工作噪音 Noise	≤45dB

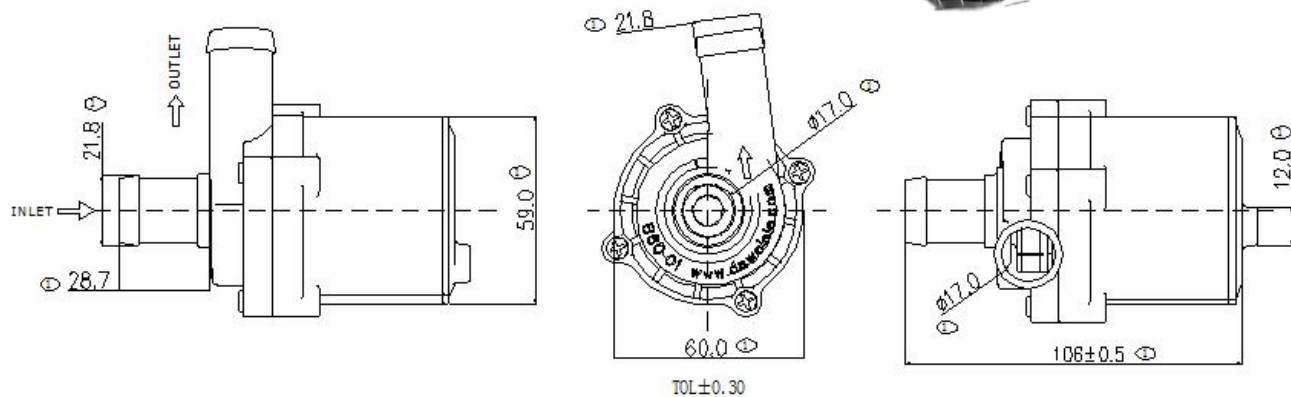
## 功能特点

## Function and Characteristics

泵体类型为三相直流无刷泵，  
主要应用于智能马桶、燃气热水器

The pump body type is a three-phase DC brushless pump.  
Mainly used in smart toilets, gas water heaters

型号Model: DWP03-B60



# 无刷水泵Brushless Pump

## 基本规格参数 Specification

电压 Rated voltage	DC12-24V
功率 Power	<60W
压力 Pressure	0.5~1.0Bar
流量 Rate of flow	40~60L/min
流体温度 Fluid temperature	0-55℃
寿命 Working Life	> 10000 Hours
工作噪音 Noise	≤45dB

## 功能特点

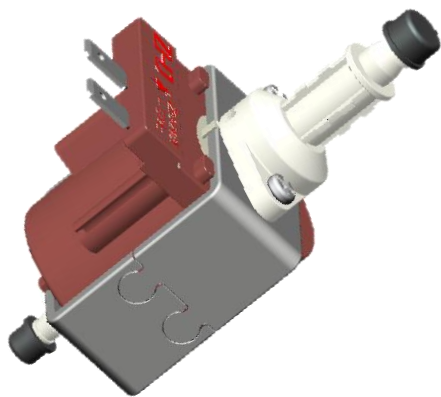
## Function and Characteristics

泵体类型为三相直流无刷泵，  
主要应用于智能马桶、燃气热水器

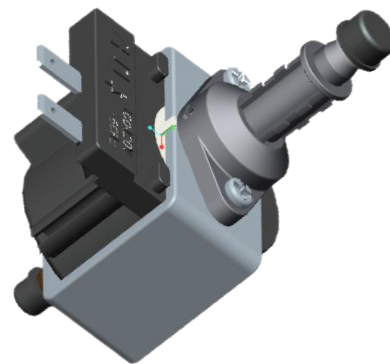
The pump body type is a three-phase DC brushless pump.  
Mainly used in smart toilets, gas water heaters

# 电磁泵系列

## Electromagnetic Pump Series

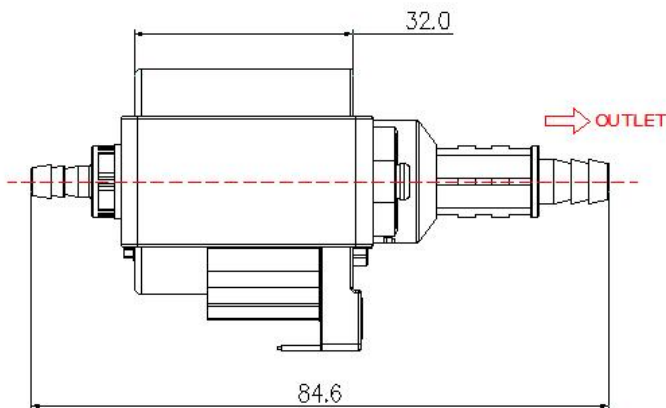
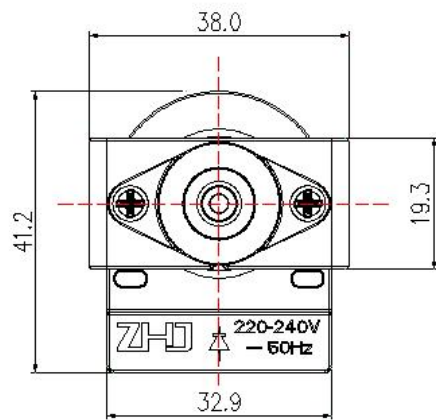
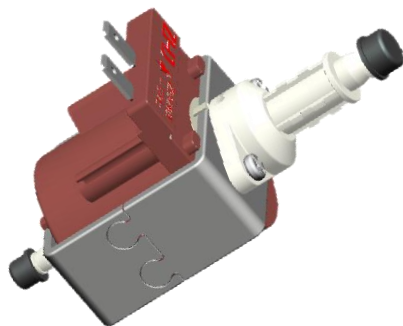


H type



M type

型号Model: H type



# 电磁水泵Electromagnetic pump

## 基本规格参数 Specification

电压 Rated voltage	AC110~220V 50~60HZ
功率 Power	<20W
压力 Pressure	3.0~7.0Bar
流量 Rate of flow	70~300ml/min
流体温度 Fluid temperature	0-55℃
寿命 Working Life	> 1000 Hours
工作噪音 Noise	/

## 功能特点

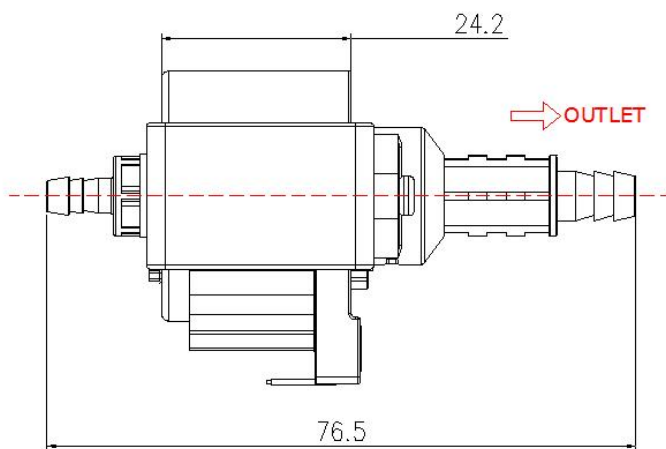
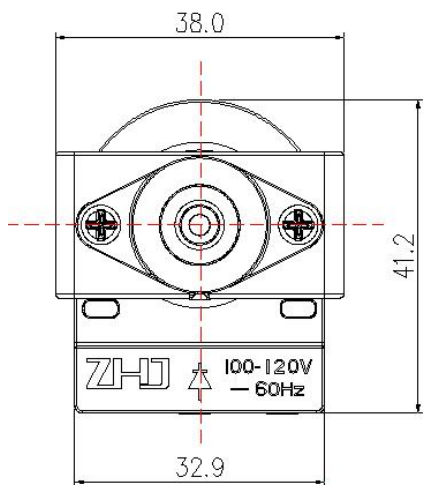
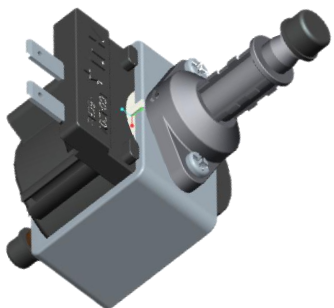
## Function and Characteristics

泵体类型为电磁柱塞泵，使用交流电为电源，具有自吸能力，流量压力稳定可在高反压下长期工作

Pump body type is electromagnetic plunger pump, using AC as power supply, with self-suction capacity, stable flow and pressure can work under high back pressure for a long time.

主要应用于蒸汽类产品，如蒸汽地拖，蒸汽烫斗，蒸汽烤箱  
Mainly used in steam products, such as steam floor mop, steam irons, steam oven.

型号Model: M type



# 电磁水泵Electromagnetic pump

## 基本规格参数 Specification

电压 Rated voltage	AC110~120V 50~60HZ
功率 Power	<15W
压力 Pressure	1.5~5.0Bar
流量 Rate of flow	50~150ml/min
流体温度 Fluid temperature	0-55℃
寿命 Working Life	> 1000 Hours
工作噪音 Noise	/

## 功能特点

## Function and Characteristics

泵体类型为电磁柱塞泵，使用交流电为电源，具有自吸能力，流量压力稳定可在高反压下长期工作，带泄压保护功能（选装）

Pump body type is electromagnetic plunger pump, using alternating current as power supply, with self-suction capacity, stable flow and pressure can work under high back pressure for a long time, with pressure relief protection function (optional)

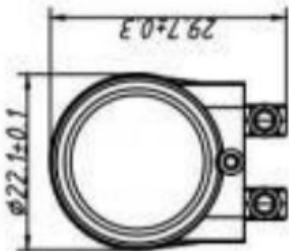
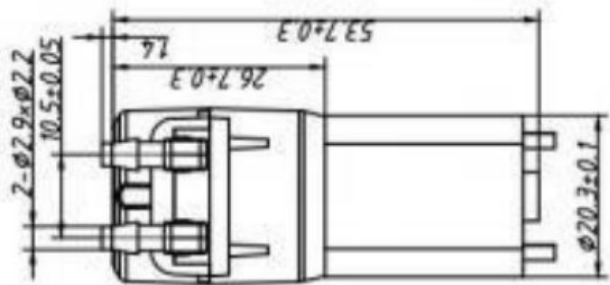
主要应用于蒸汽类产品，如蒸汽地拖，蒸汽烫斗，蒸汽烤箱  
Mainly used in steam products, such as steam floor mop, steam irons, steam oven.

**蠕动泵系列**

**Peristaltic pump series**



型号Model: DWP04-B22



## 蠕动泵Peristaltic pump

### 基本规格参数 Specification

电压 Rated voltage	DC12V
使用电压 Operating voltage	DC 10.0V~13.0V
压力 Pressure	≥5PSI
流量 Rate of flow	40-60ml/Min
流体温度 Fluid temperature	0-55℃
寿命 Working Life	60000 times
工作噪音 Noise	/

### 功能特点

### Function and Characteristics

使用寿命长  
流量精准  
Long service life  
Precise flow rate

主要应用于洗地机，智能马桶  
Mainly used in floor scrubbers, smart toilets