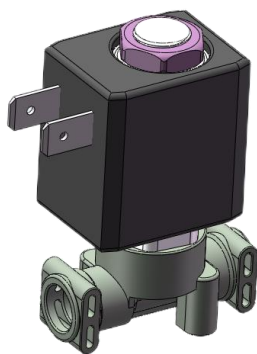


# 电磁阀系列产品介绍

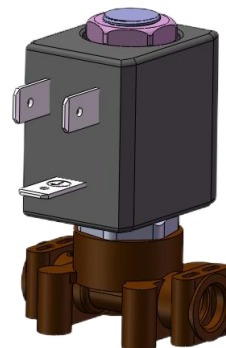
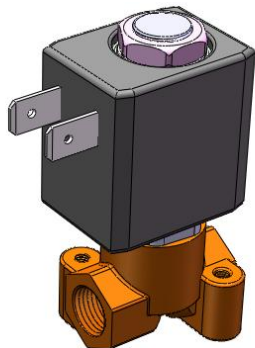
## Introduction of Valve

# 高压电磁阀系列

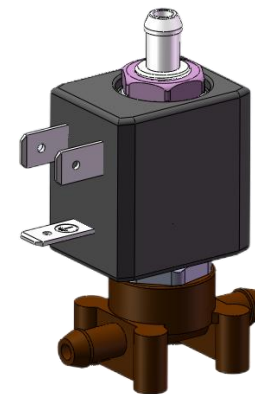
## Diaphragm Air Pump Series



DEV01

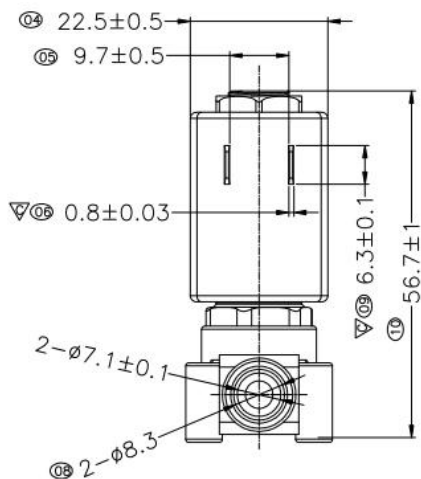
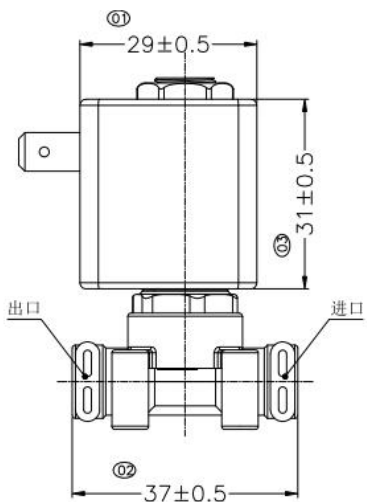
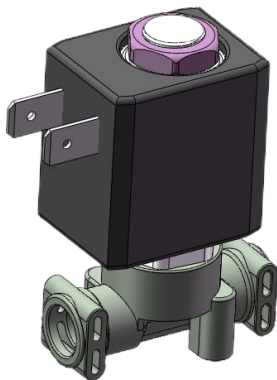


DEV02



# Electromagnetic Valve for Air

型号Model: DEV01-O163



## 基本规格参数 Specification

电压 Rated voltage	DC12V/DC24V/DC36V/Others
适用压力 Pressure range	0~2.0MPa;
介质温度 Medium temperature	0 ~ 40℃
使用寿命 Working life	>100K times
适用介质 Medium texture	水、气、二氧化碳 Water, Air, CO2
连接方式 Connection type	Φ7mm铁氟龙快捷管/250端子 Φ7mm Teflon Express tube / 250 terminal

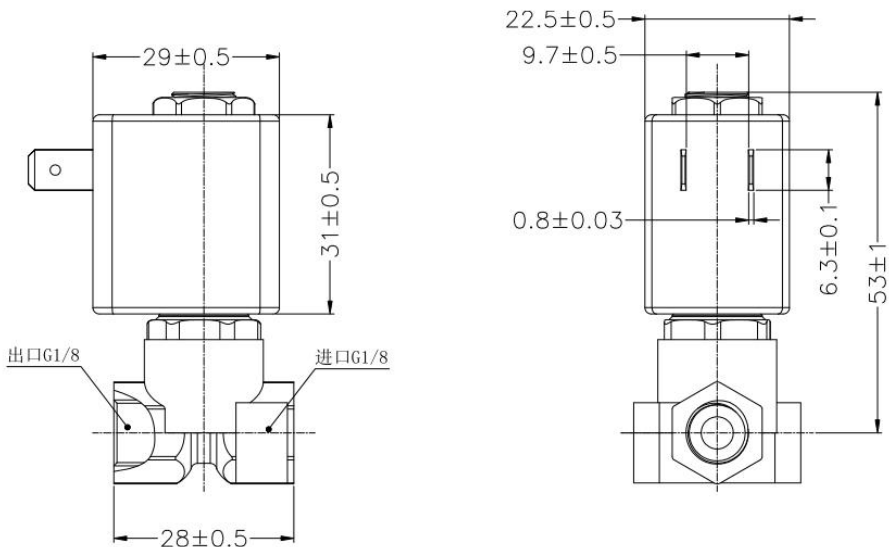
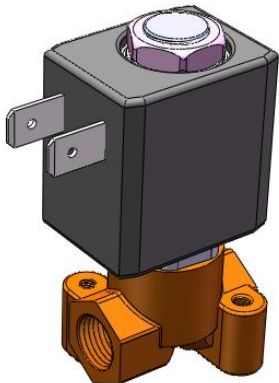
## 功能特点 Function and Characteristics

适用苏打水机或咖啡机

Suitable for soda machine or coffee machine

# Electromagnetic Valve for Air

型号Model: DEV01-O203 (铜阀 Copper valve)



## 基本规格参数 Specification

电压 Rated voltage	DC12V/DC24V/DC36V/Others
适用压力 Pressure range	0~2.0MPa;
介质温度 Medium temperature	0 ~ 140℃
使用寿命 Working life	>100K times
适用介质 Medium texture	水、气、二氧化碳、蒸汽 Water, Air, CO2, Steam
连接方式 Connection type	G1/4螺纹、G1/8螺纹, 250端子 G1/4 thread, G1/8 thread, 250 terminals

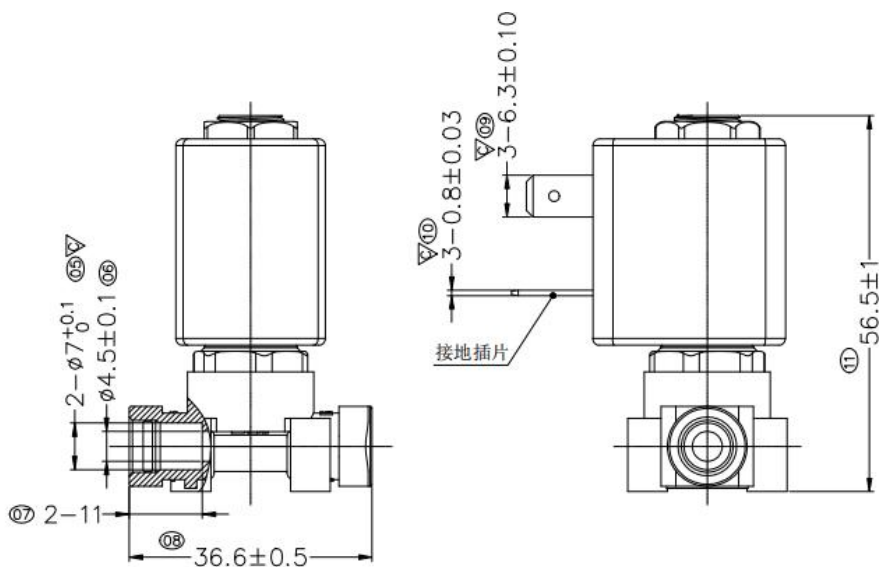
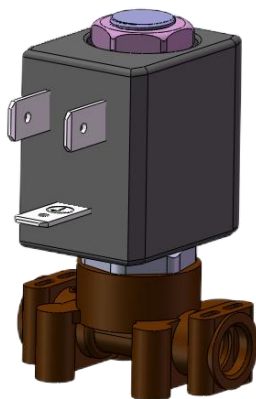
## 功能特点 Function and Characteristics

适用苏打水机或咖啡机

Suitable for soda machine or coffee machine

# Electromagnetic Valve for Air

型号Model: DEV02-201A4



## 基本规格参数 Specification

电压 Rated voltage	DC12V, DC24V, DC36V、 AC110~120V, AC220~230V
适用压力 Pressure range	0~1.5MPa;
介质温度 Medium temperature	0 ~ 140℃
使用寿命 Working life	>100K times
适用介质 Medium texture	水、气、二氧化碳、蒸汽 Water, Air, CO2, Steam
连接方式 Connection type	Φ7mm铁氟龙快捷管/250端子 Φ7mm Teflon Express tube / 250 terminal

## 功能特点

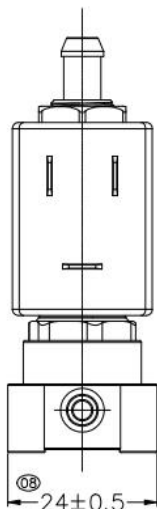
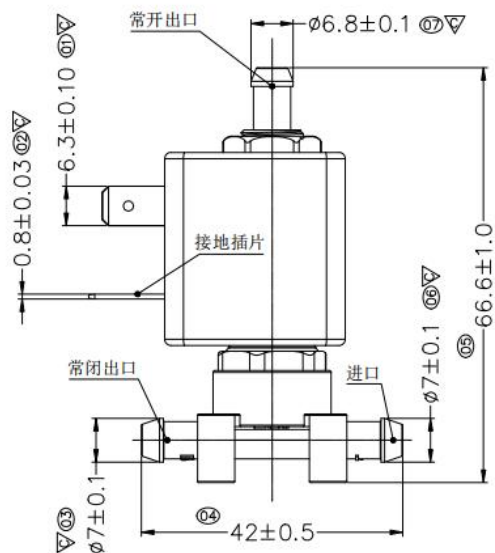
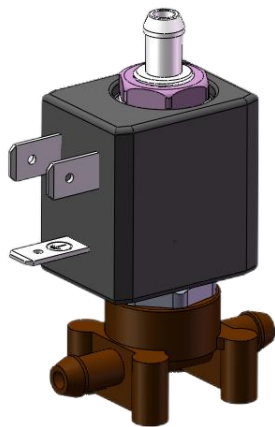
## Function and Characteristics

高温高压环境工作，适用意式咖啡机

Working in high temperature and high pressure environment, suitable for Espresso machine

# Electromagnetic Valve for Air

型号Model: DEV02-302A3



## 基本规格参数 Specification

电压 Rated voltage	DC12V, DC24V, DC36V、 AC110~120V, AC220~230V
适用压力 Pressure range	0~1.5MPa;
介质温度 Medium temperature	0 ~ 140℃
使用寿命 Working life	>100K times
适用介质 Medium texture	水、气、二氧化碳、蒸汽 Water, Air, CO2, Steam
连接方式 Connection type	Φ7mm宝塔接头/250端子 Φ7mm pagoda joint connector link/250 terminal

## 功能特点

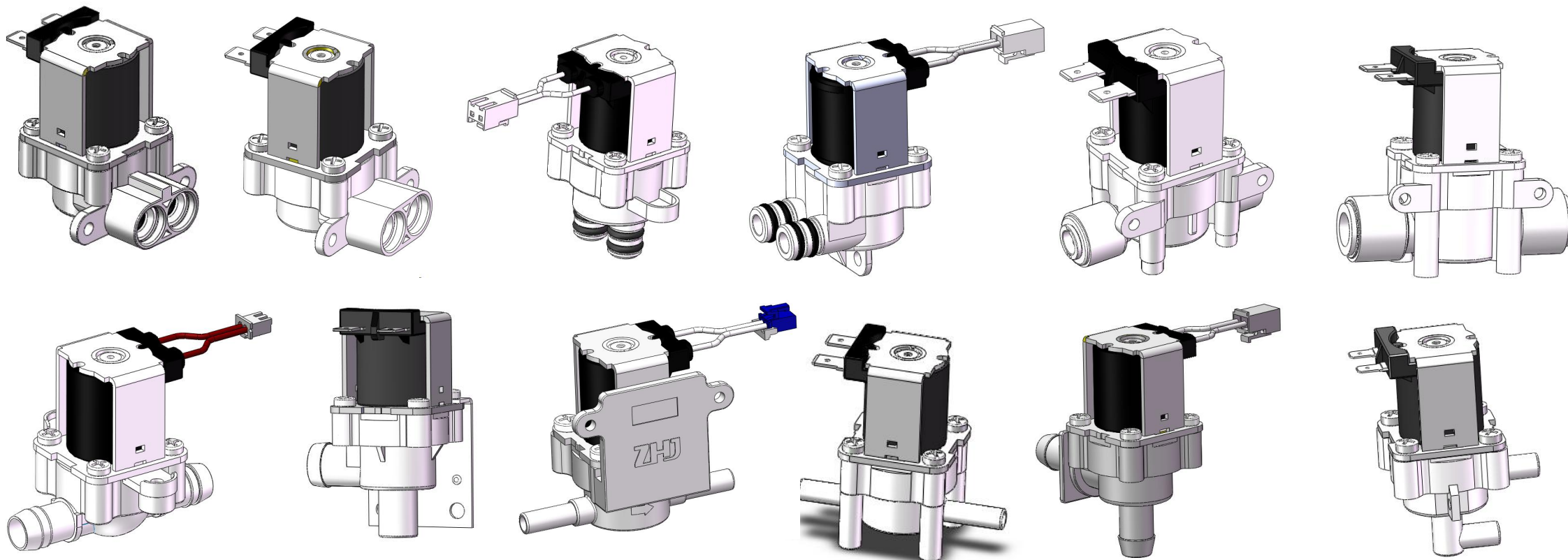
### Function and Characteristics

高温高压环境工作，适用意式咖啡机

Working in high temperature and high pressure environment, suitable for Espresso machine

# 净水电磁阀系列

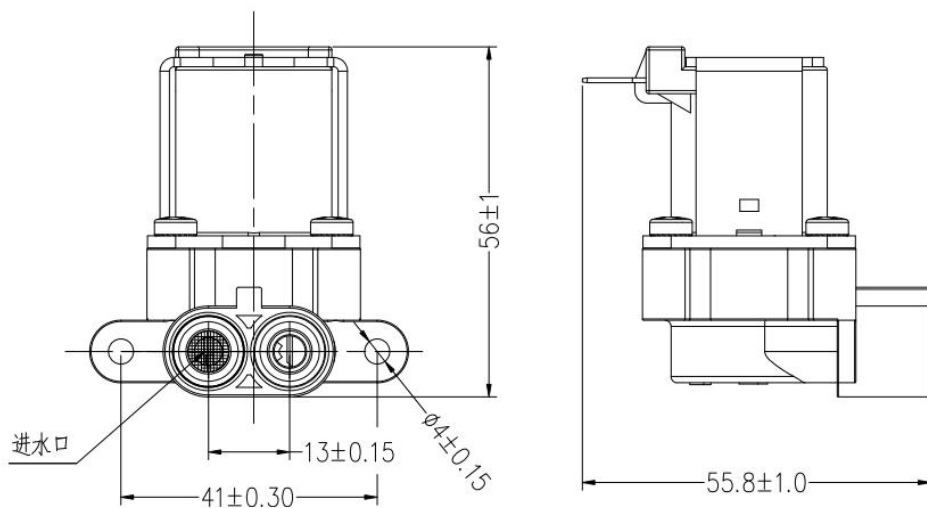
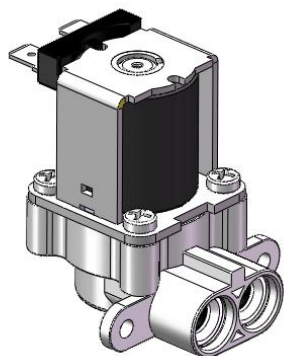
## Diaphragm Air Pump Series





# Waterway board Electromagnetic Valve

型号Model: DEV01-W11



## 基本规格参数 Specification

电压 Rated voltage	DC12V/DC24V/DC36V/Others
适用水压 Water pressure range	0.02 ~ 1.2MPa
介质温度 Medium temperature	0 ~ 40℃
使用寿命 Working life	>100K times
流量Rate of flow	0.5 ~ 15L/min
连接方式 Connection type	水路板 waterway board

## 功能特点 Function and Characteristics

水路板连接，安装方便。进出水口同侧，体积小，可自带滤网。  
废水阀流量可定制；0.42MPa-300CC/min及其他

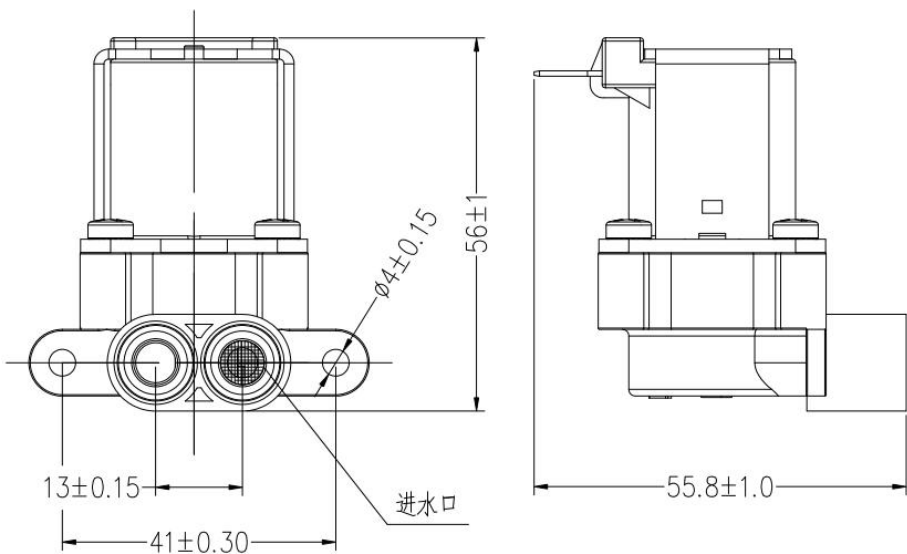
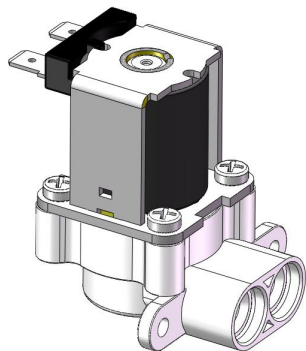
Waterway board connection, easy installation. Inlet and outlet on the same side, small size, equipped with filter screen.

Customization can be acceptable; 0.42MPa-300 cc /min and others.



# Waterway board Electromagnetic Valve

型号Model: DEV01-I11



## 基本规格参数 Specification

电压 Rated voltage	DC12V/DC24V/DC36V/Others
适用水压 Water pressure range	0.02 ~ 1.2MPa
介质温度 Medium temperature	0 ~ 40℃
使用寿命 Working life	>100K times
流量Rate of flow	0.5 ~ 15L/min
连接方式 Connection type	水路板 waterway board

## 功能特点

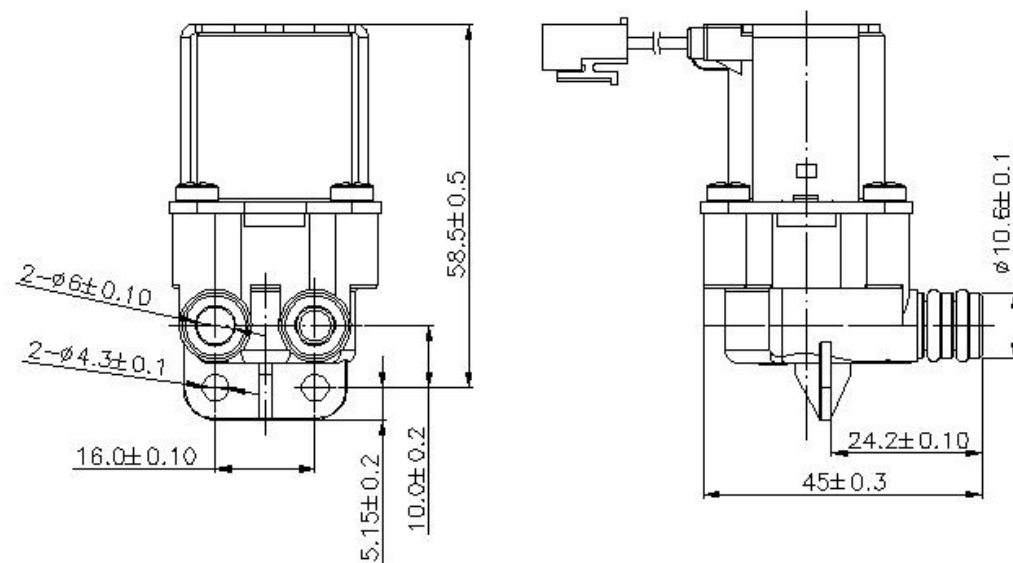
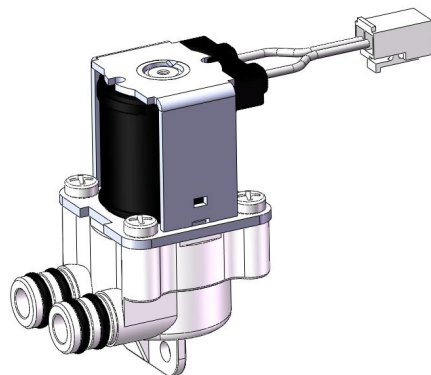
### Function and Characteristics

水路板连接，安装方便。进出水口同侧，体积小，自带滤网。

Waterway board connection, easy installation. Inlet and outlet on the same side, small size, equipped with filter screen.

# Waterway board Electromagnetic Valve

型号Model: DEV01-I05/W05



## 基本规格参数 Specification

电压 Rated voltage	DC12V/DC24V/DC36V/Others
适用水压 Water pressure range	0.02 ~ 1.2MPa
介质温度 Medium temperature	0 ~ 40℃
使用寿命 Working life	10万次以上 >100K times
流量Rate of flow	0.5 ~ 20L/min
连接方式 Connection type	水路板 waterway board

## 功能特点

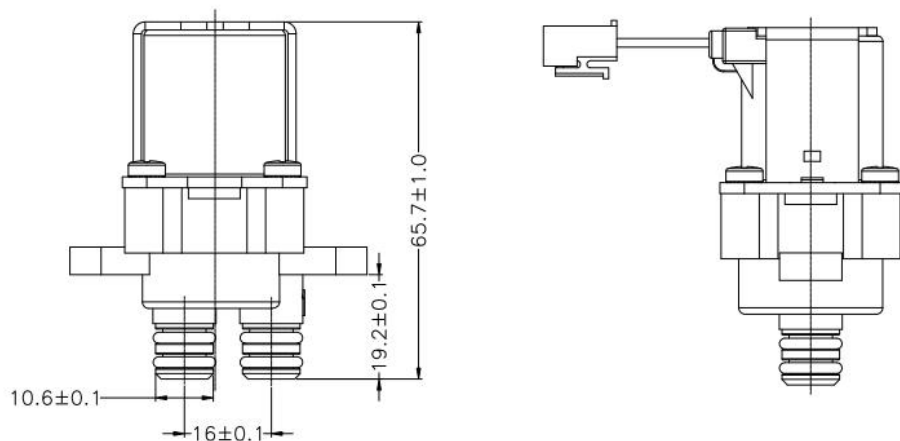
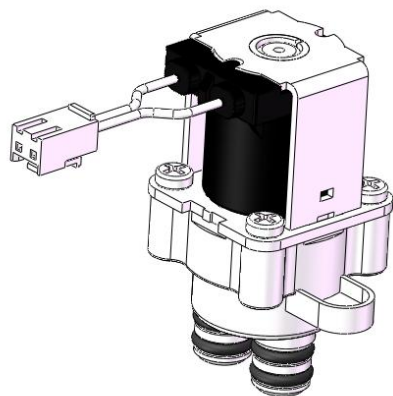
## Function and Characteristics

水路板连接，安装方便。节省空间。  
废水阀流量可定制；0.55MPa-550CC/min及其他

Waterway board connection,easy installation. Save space.  
Customization can be acceptable;0.55MPa-550 cc /min  
and others.

# Waterway board Electromagnetic Valve

型号Model: DEV01-I21/W21



## 基本规格参数 Specification

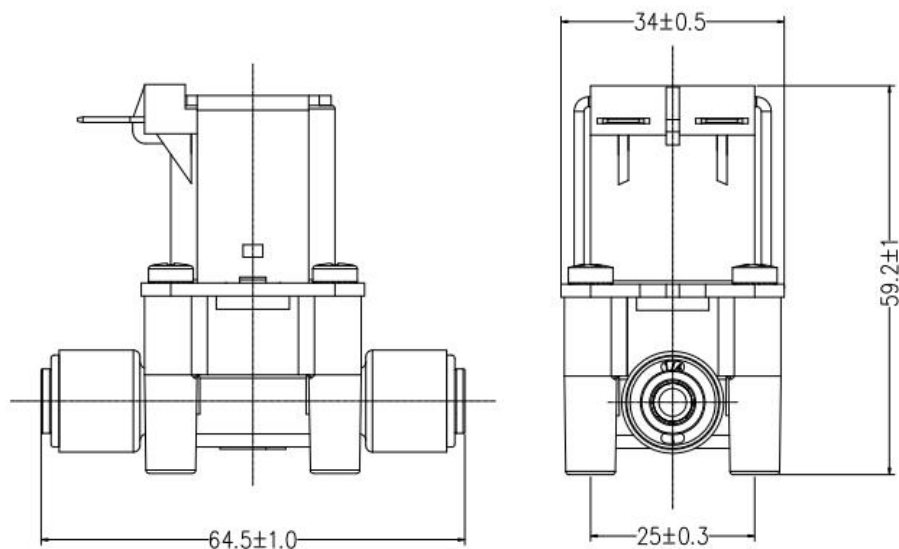
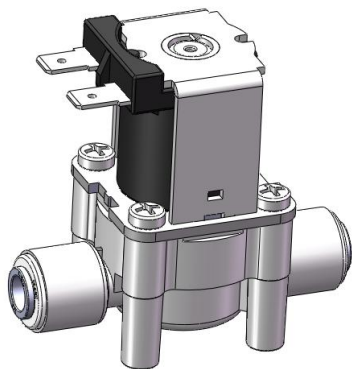
电压 Rated voltage	DC12V/DC24V/DC36V/Others
适用水压 Water pressure range	0.02 ~ 1.2MPa
介质温度 Medium temperature	0 ~ 40℃
使用寿命 Working life	>100K times
流量Rate of flow	0.5 ~ 20L/min
连接方式 Connection type	水路板 waterway board

## 功能特点 Function and Characteristics

水路板连接，安装方便。节省空间。  
废水阀流量可定制；0.42MPa-300CC/min及其他

Waterway board connection,easy installation. Save space.  
Customization can be acceptable;0.42MPa-300 cc /min and others.

型号Model: DEV01-I01/W01



# 二分快插电磁阀 Quick-plug Electromagnetic Valve

## 基本规格参数 Specification

电压 Rated voltage	DC12V/DC24V/36V/Others
适用水压 Water pressure range	0.02 ~ 1.2MPa
介质温度 Medium temperature	0 ~ 40°C
使用寿命 Working life	> 100K times
流量Rate of flow	0.5 ~ 20L/min
连接方式 Connection type	二分快插/250端子 Quick-plug/250 Terminal

## 功能特点

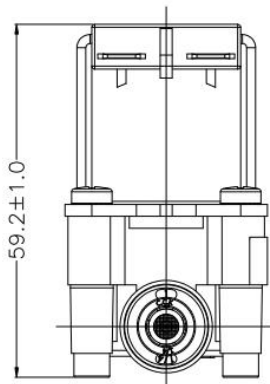
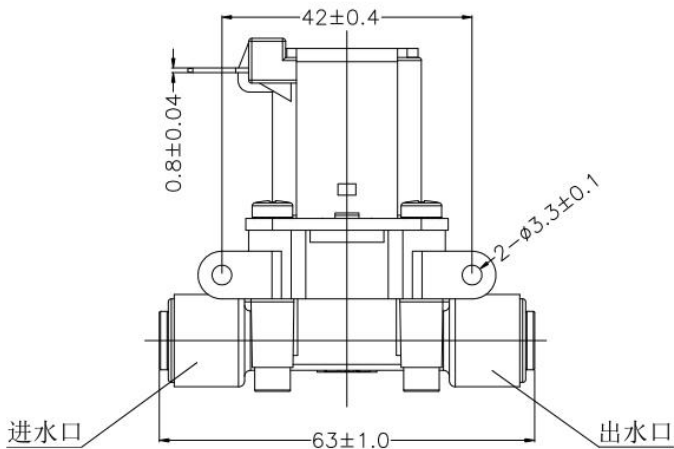
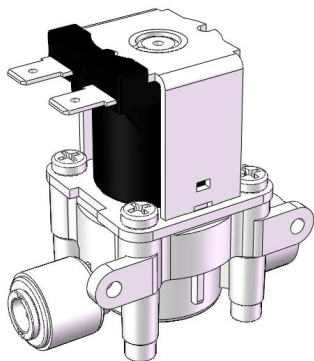
## Function and Characteristics

二分快接，安装方便。自带滤网，一体过滤；  
废水流量可定制；常规0.42MPa-300CC/min及其他

Quick-plug connection,easy installation. With a filter  
screen, integrated filtering;  
Customization can be acceptable; 0.42MPa-300 cc /min  
and others.

Quick-plug Electromagnetic Valve

型号Model: DEV01-I22/W22



基本规格参数 Specification

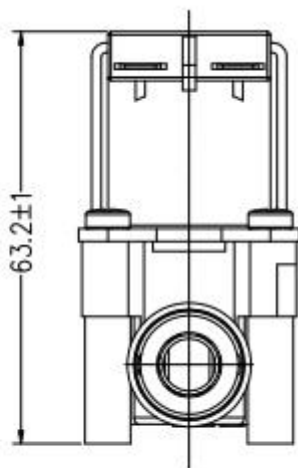
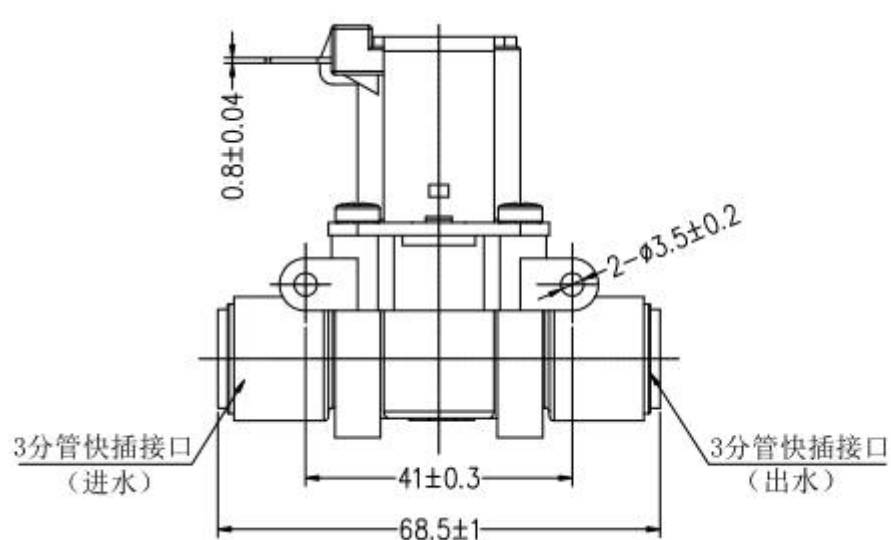
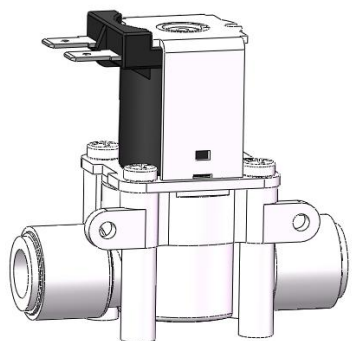
电压 Rated voltage	DC12V/DC24V/36V/Others
适用水压 Water pressure range	0.02 ~ 1.2MPa
介质温度 Medium temperature	0 ~ 40℃
使用寿命 Working life	> 100K times
流量 Rate of flow	0.5 ~ 20L/min
连接方式 Connection type	二分快插/250端子 Quick-plug/250 Terminal

功能特点 Function and Characteristics

二分快接，安装方便。自带滤网，一体过滤；  
废水阀流量可定制；常规0.42MPa-300CC/min及其他

Quick-plug connection,easy installation. With a filter screen, integrated filtering;  
Customization can be acceptable;0.42MPa-300 cc /min and others.

型号Model: DEV01-I19/W19



# 三分快插电磁阀 Quick-plug Electromagnetic Valve

## 基本规格参数 Specification

电压 Rated voltage	DC12V/DC24V/DC36V/Others
适用水压 Water pressure range	0.02 ~ 1.2MPa
介质温度 Medium temperature	0 ~ 40℃
使用寿命 Working life	>100K times
流量Rate of flow	0.5 ~ 20L/min
连接方式 Connection type	三分快插/250端子 Quick-plug/250 Terminal

## 功能特点

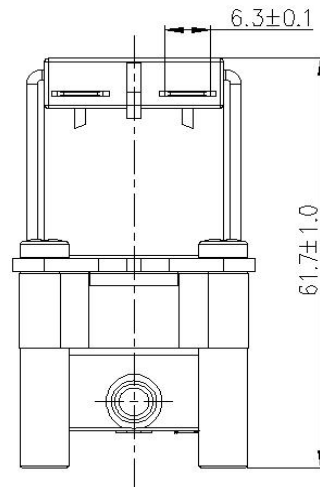
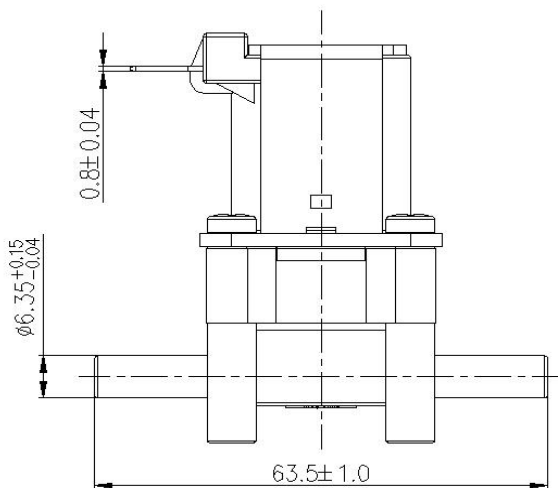
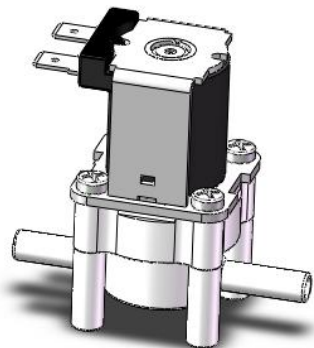
## Function and Characteristics

三分快接，安装方便。通量大

Quick-plug, easy installation, Large flow.

# Connecting link Electromagnetic Valve

型号Model: DEV01-I03/W03



## 基本规格参数 Specification

电压 Rated voltage	DC12V/DC24V/DC36V/Others
适用水压 Water pressure range	0.02 ~ 1.2MPa
介质温度 Medium temperature	0 ~ 40°C
使用寿命 Working life	>100K times
流量Rate of flow	0.5 ~ 15L/min
连接方式 Connection type	二分接杆 Connecting link

## 功能特点

## Function and Characteristics

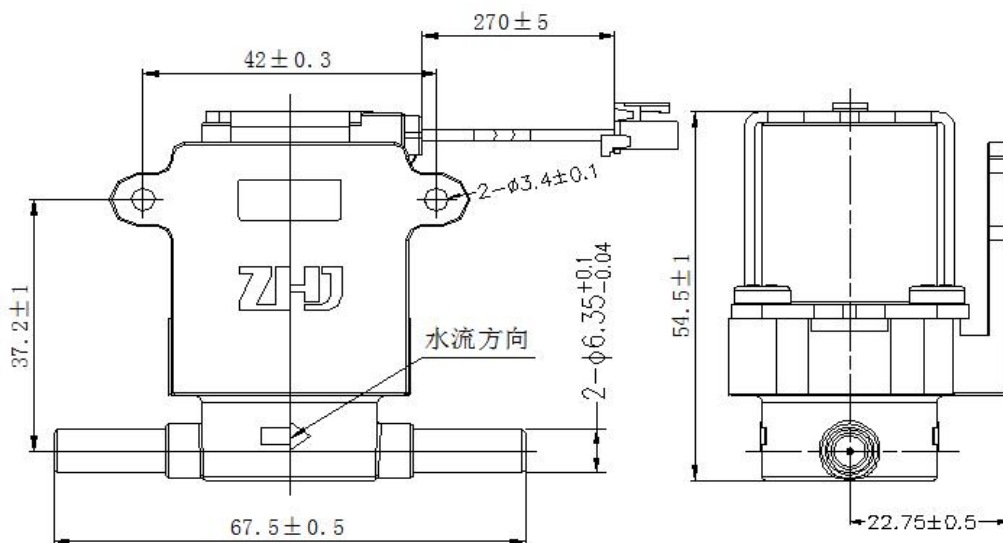
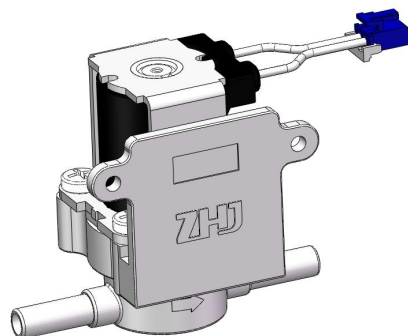
二分接杆，安装方便。  
废水阀流量可定制；0.42MPa-300CC/min及其他

Connecting link, easy installation.  
Customization can be acceptable; 0.42MPa-300 cc /min and others.



## Connecting link Electromagnetic Valve

型号Model: DEV01-I20/W20



### 基本规格参数 Specification

电压 Rated voltage	DC12V/DC24V/DC36V/Others
适用水压 Water pressure range	0.02 ~ 1.2MPa
介质温度 Medium temperature	0 ~ 40°C
使用寿命 Working life	> 100K times
流量Rate of flow	0.5 ~ 15L/min
连接方式 Connection type	二分接杆 Connecting link

### 功能特点

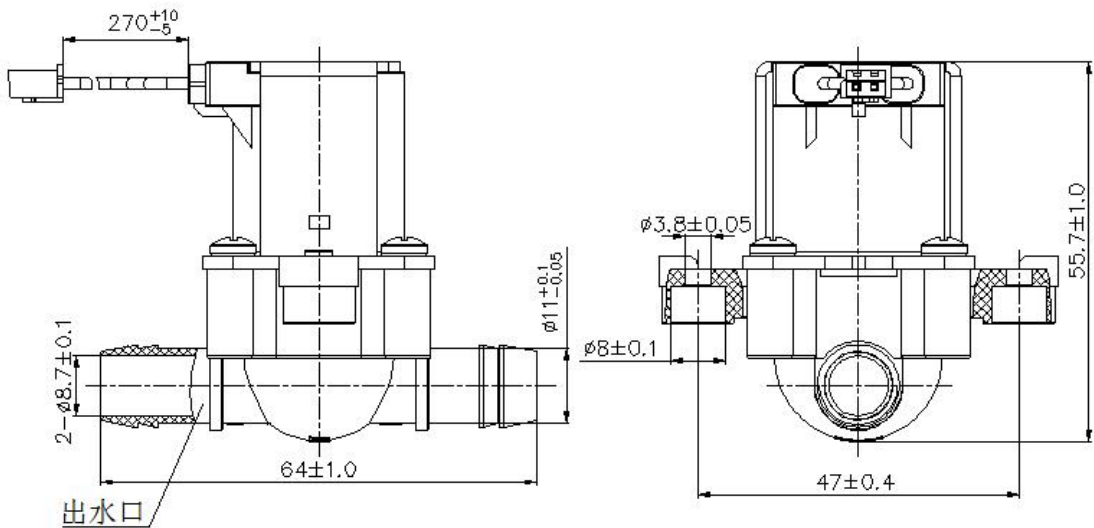
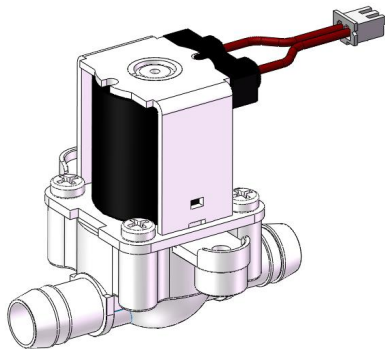
### Function and Characteristics

二分接杆，安装方便。  
废水阀流量可定制；0.42MPa-300CC/min及其他

Connecting link, easy installation  
Customization can be acceptable; 0.42MPa-300 cc /min  
and others.

Outlet Electromagnetic Valve

型号Model: DEV01-O10



基本规格参数 Specification

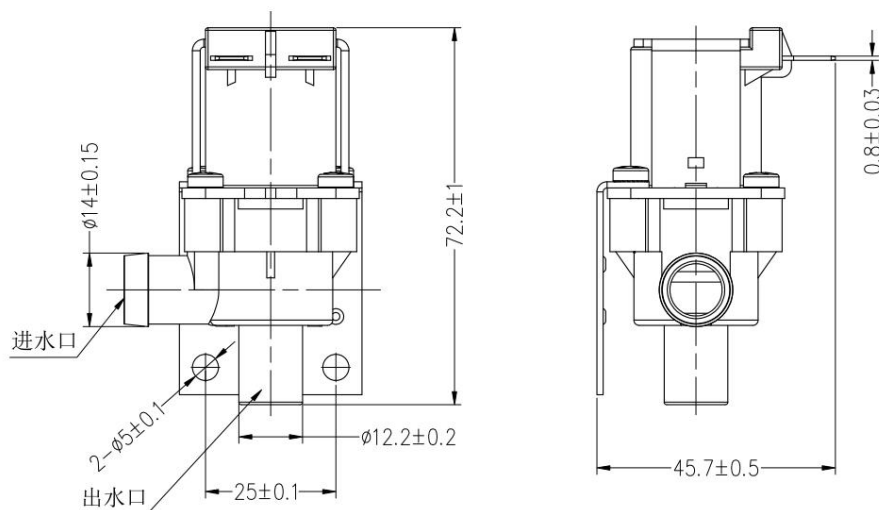
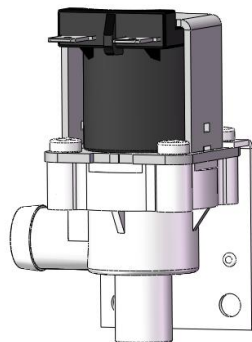
电压 Rated voltage	DC12V/DC24V/DC36V/Others
适用水压 Water pressure range	0 ~ 0.003MPa
介质温度 Medium temperature	0 ~ 100℃
使用寿命 Working life	>100K times
流量Rate of flow	0.003MPa≥2.5L/min
连接方式 Connection type	软管连接 Connection by hose

功能特点  
Function and Characteristics

安装方便，流量大。  
Easy installation, Large flow.

# 大流量放水电磁阀 Outlet Electromagnetic Valve

型号Model: DEV01-005



## 基本规格参数 Specification

电压 Rated voltage	DC12V/DC24V/DC36V/Others
适用水压 Water pressure range	0 ~ 0.003MPa
介质温度 Medium temperature	0 ~ 100°C
使用寿命 Working life	> 100K times
流量Rate of flow	0.003MPa $\geq$ 2.5L/min
连接方式 Connection type	软管连接 Connection by hose

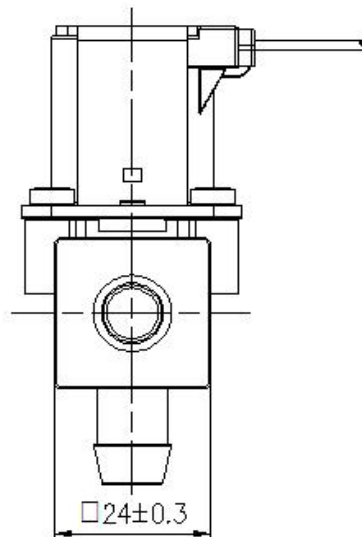
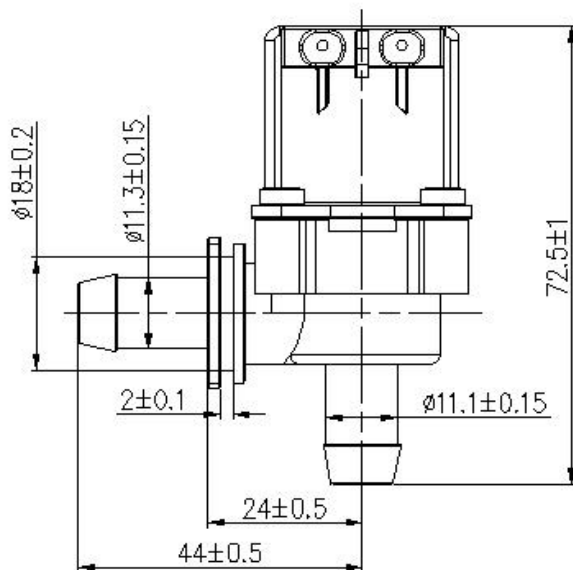
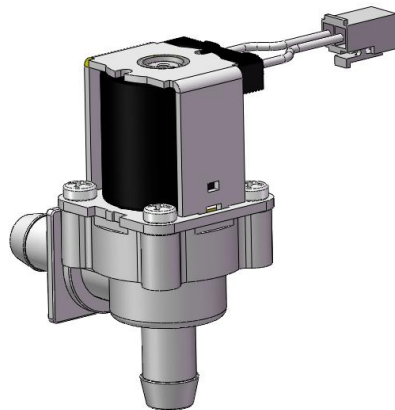
## 功能特点 Function and Characteristics

安装方便，流量大。

Easy installation, Large flow.

# 大流量放水电磁阀 Outlet Electromagnetic Valve

型号Model: DEV01-004



## 基本规格参数 Specification

电压 Rated voltage	DC12V/DC24V/DC36V/Others
适用水压 Water pressure range	0 ~ 0.004MPa
介质温度 Medium temperature	0 ~ 100°C
使用寿命 Working life	>100K times
流量Rate of flow	0.004Mpa $\geq$ 2.5L/min
连接方式 Connection type	接杆 Connecting link

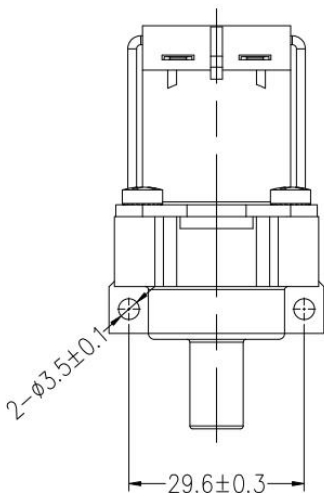
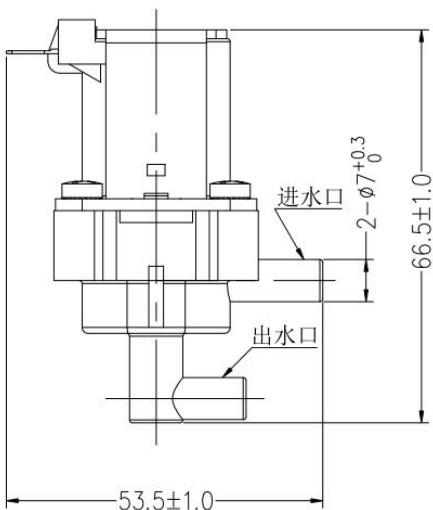
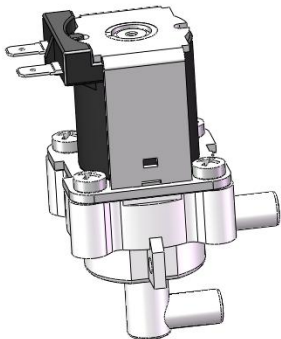
## 功能特点 Function and Characteristics

加装硅胶, 安装方便, 通径流量大。

With silica gel,easy installation,Large flow.

Outlet Electromagnetic Valve

型号Model: DEV01-001



基本规格参数 Specification

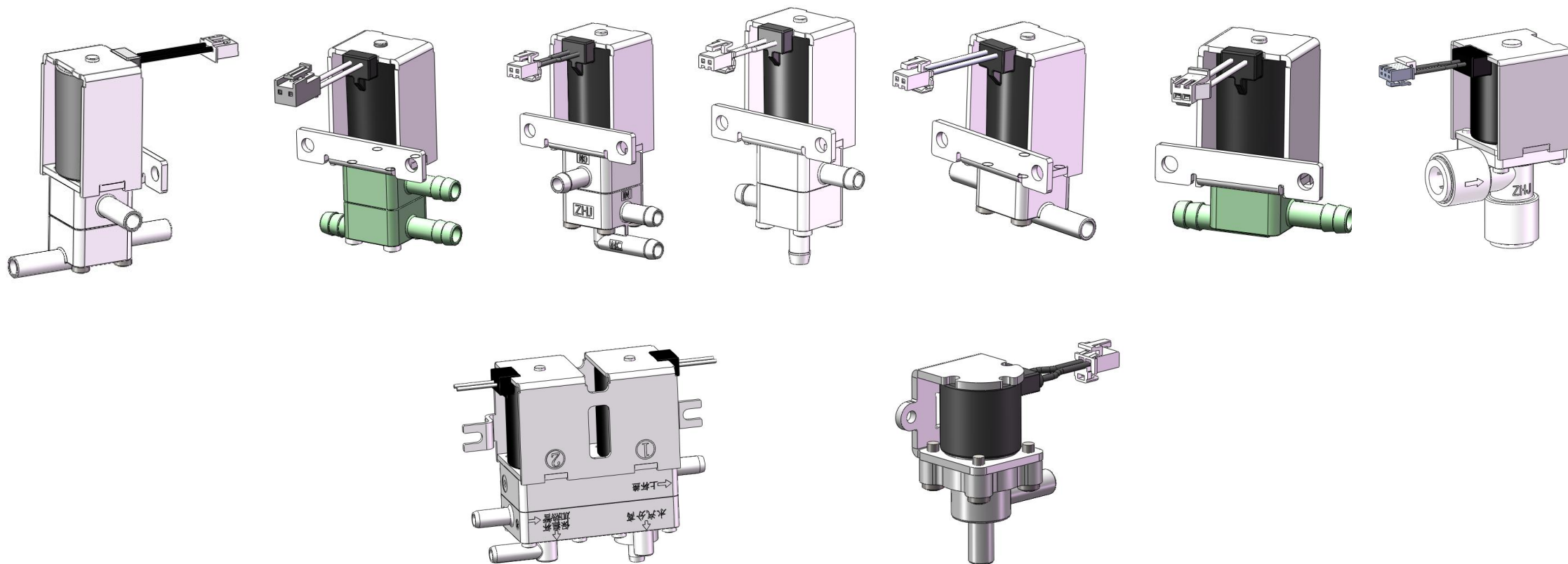
电压 Rated voltage	DC12V/DC24V/DC36V/Others
适用水压 Water pressure range	0 ~ 0.003MPa
介质温度 Medium temperature	0 ~ 100℃
使用寿命 Working life	>100K times
流量 Rate of flow	0.003MPa≥0.6L/min
连接方式 Connection type	接杆 Connecting link

功能特点  
Function and Characteristics

接杆，安装方便，大流量。  
Connecting link, easy installation, Large flow.

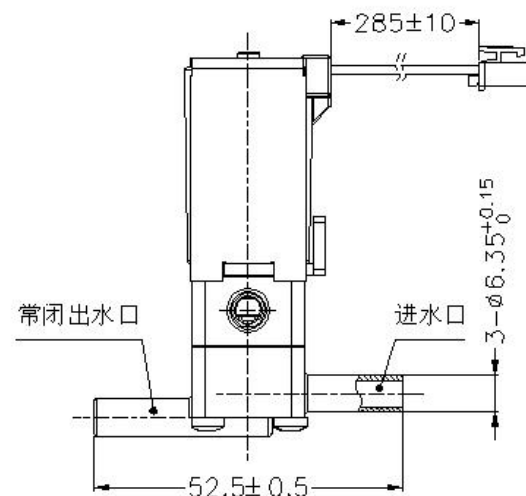
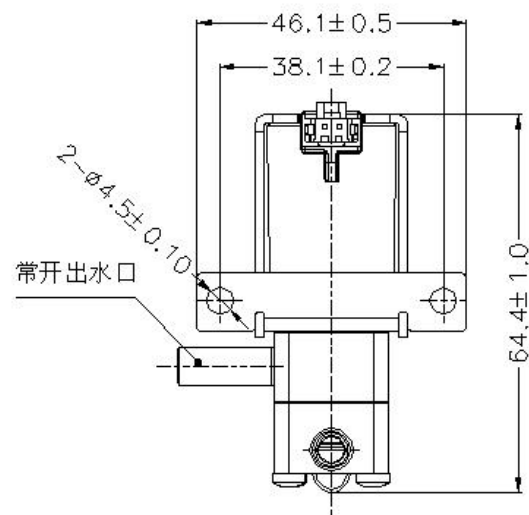
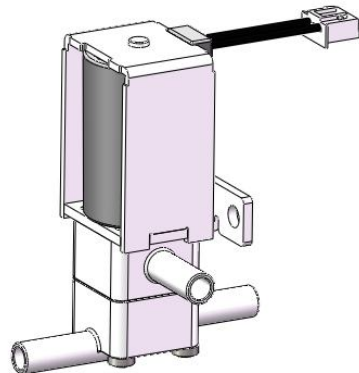
# 直动电磁阀系列

## Diaphragm Air Pump Series



# Three-way Electromagnetic Valve

型号Model: DEV01-002



## 基本规格参数 Specification

电压 Rated voltage	DC12V/DC24V/DC36V/Others
适用水压 Water pressure range	0 ~ 0.10MPa
介质温度 Medium temperature	0 ~ 100℃
使用寿命 Working life	> 100K times
流量 Rate of flow	0.05Mpa≥500ml/min
连接方式 Connection type	二分接杆 Connecting link

## 功能特点

## Function and Characteristics

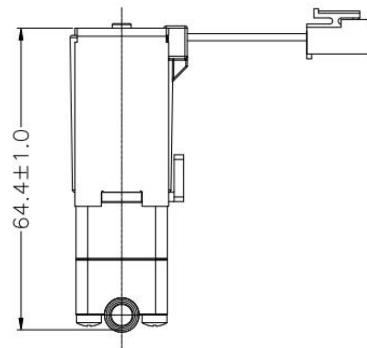
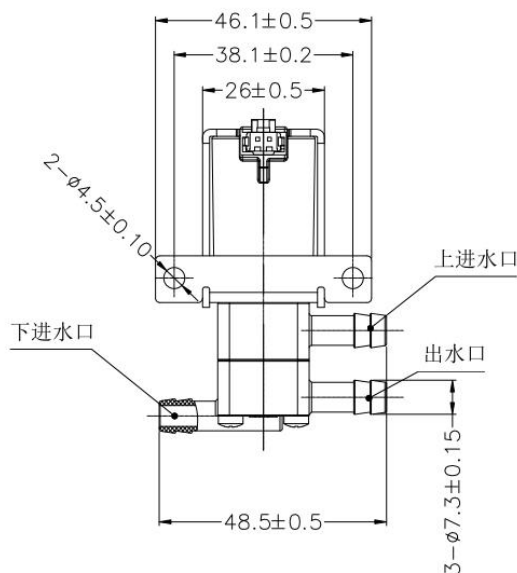
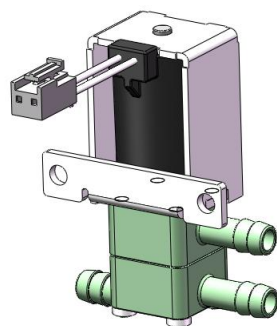
二分接杆，安装方便，连接可靠；  
一进二出，通电切换

Connecting link, easy installation and reliable connection.  
One in two out, switchover when power on.



# Three-way Electromagnetic Valve

型号Model: DEV01-007



## 基本规格参数 Specification

电压 Rated voltage	DC12V/DC24V/DC36V/Others
适用水压 Water pressure range	0 ~ 0.10MPa
介质温度 Medium temperature	0 ~ 100℃
使用寿命 Working life	> 100K times
流量 Rate of flow	0.05Mpa≥500ml/min
连接方式 Connection type	宝塔 Pagoda joint connector

## 功能特点

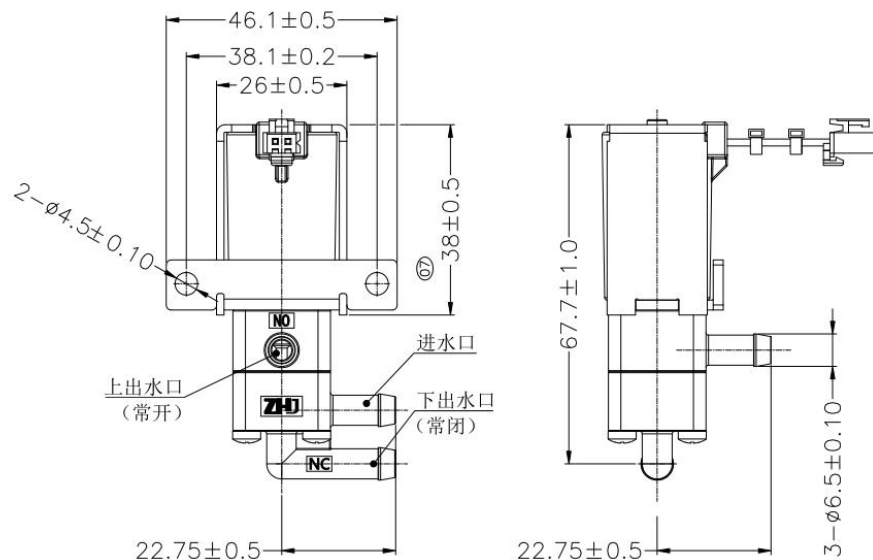
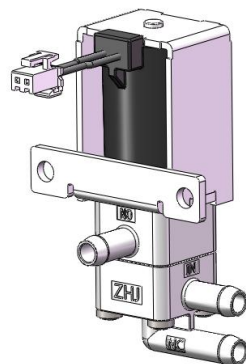
## Function and Characteristics

宝塔接头，安装方便，连接可靠；  
二进一出，通电切换

Pagoda joint connector, easy installation and reliable connection.  
Two in one out, switchover when power on.

# Three-way Electromagnetic Valve

型号Model: DEV01-007



## 基本规格参数 Specification

电压 Rated voltage	DC12V/DC24V/DC36V/Others
适用水压 Water pressure range	0 ~ 0.10MPa
介质温度 Medium temperature	0 ~ 100℃
使用寿命 Working life	> 100K times
流量Rate of flow	0.05Mpa $\geq$ 500ml/min
连接方式 Connection type	宝塔 Pagoda joint connector

## 功能特点

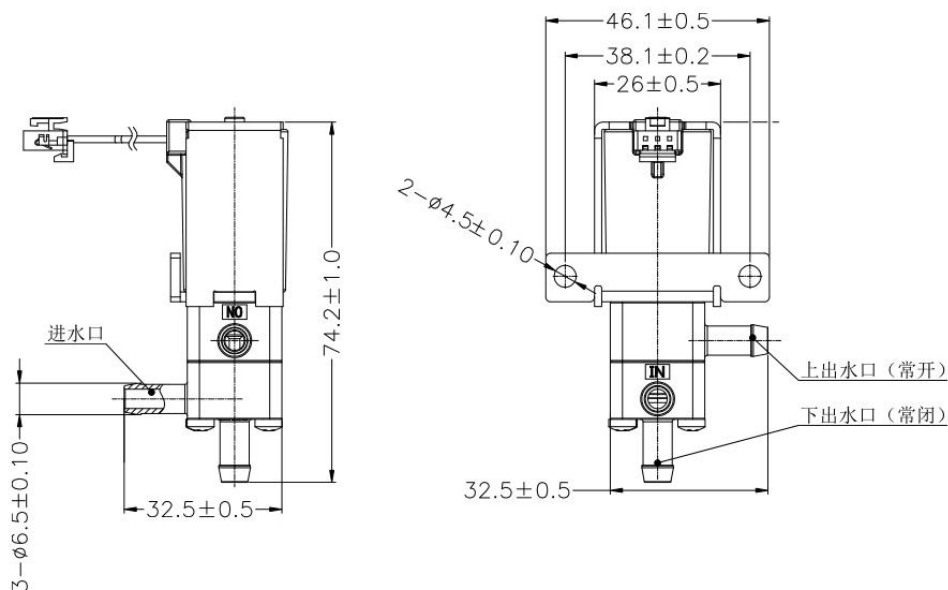
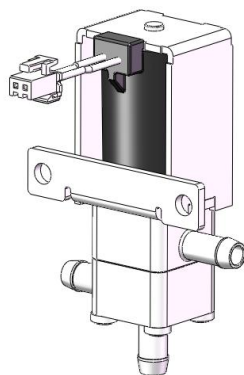
## Function and Characteristics

宝塔接头，安装方便，连接可靠；  
一进二出，通电切换

Pagoda joint connector, easy installation and reliable connection.  
One in two out, switchover when power on.

# Three-way Electromagnetic Valve

型号Model: DEV01-007



## 基本规格参数 Specification

电压 Rated voltage	DC12V/DC24V/DC36V/Others
适用水压 Water pressure range	0 ~ 0.10MPa
介质温度 Medium temperature	0 ~ 100℃
使用寿命 Working life	> 100K times
流量 Rate of flow	0.05Mpa≥500ml/min
连接方式 Connection type	宝塔 Pagoda joint connector

## 功能特点

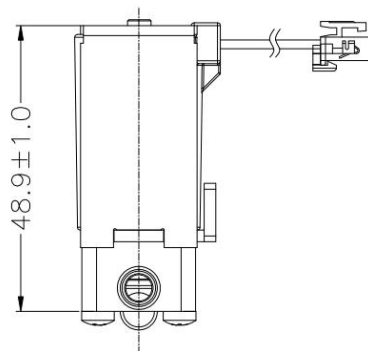
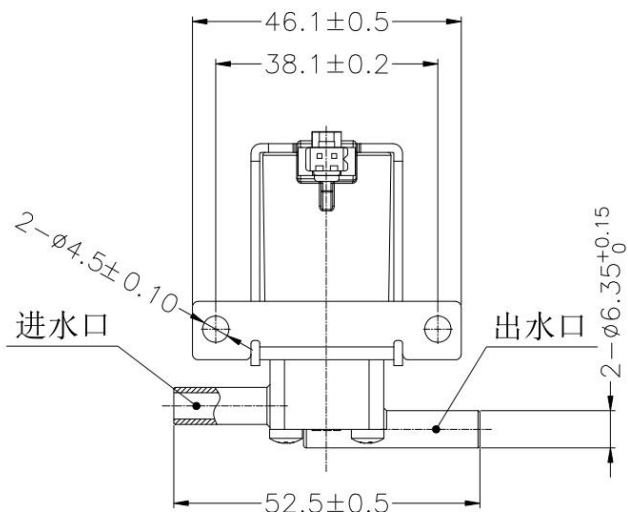
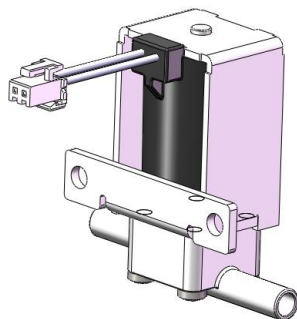
## Function and Characteristics

宝塔接头，安装方便，连接可靠；  
一进二出，通电切换

Pagoda joint connector, easy installation and reliable connection.  
One in two out, switchover when power on.

# Tow-way Electromagnetic Valve

型号Model: DEV01-002



## 基本规格参数 Specification

电压 Rated voltage	DC12V/DC24V/DC36V/Others
适用水压 Water pressure range	0 ~ 0.10MPa
介质温度 Medium temperature	0 ~ 100℃
使用寿命 Working life	> 100K times
流量Rate of flow	0.05Mpa≥500ml/min
连接方式 Connection type	二分接杆 Connecting link

## 功能特点

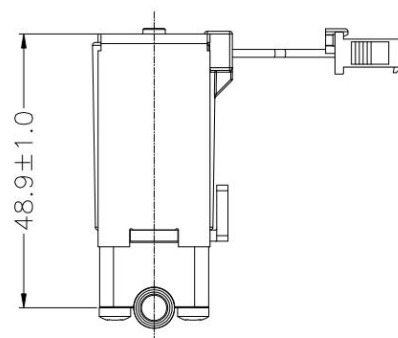
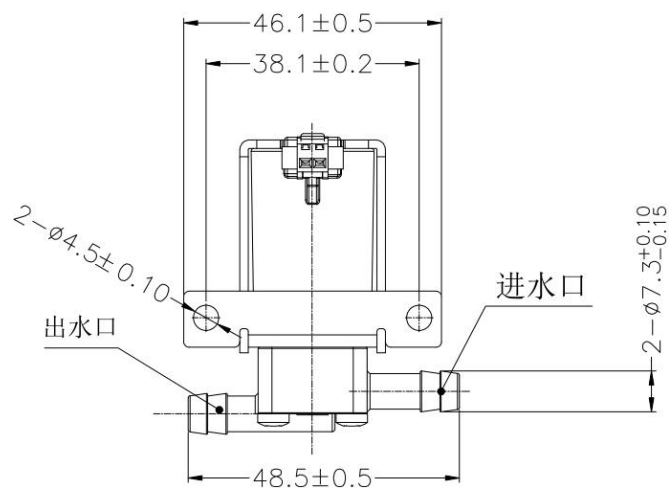
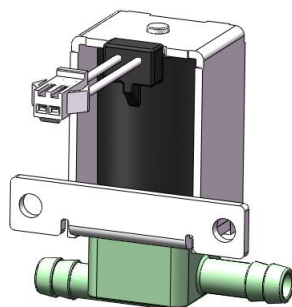
### Function and Characteristics

二分接杆，安装方便，连接可靠；  
一进一出，通电切换

Connecting link, easy installation and reliable connection.  
One in two out, switchover when power on.

# Tow-way Electromagnetic Valve

型号Model: DEV01-007



## 基本规格参数 Specification

电压 Rated voltage	DC12V/DC24V/DC36V/Others
适用水压 Water pressure range	0 ~ 0.01MPa
介质温度 Medium temperature	0 ~ 100℃
使用寿命 Working life	> 100K times
流量Rate of flow	0.05Mpa≥500ml/min
连接方式 Connection type	宝塔 Pagoda joint connector

## 功能特点

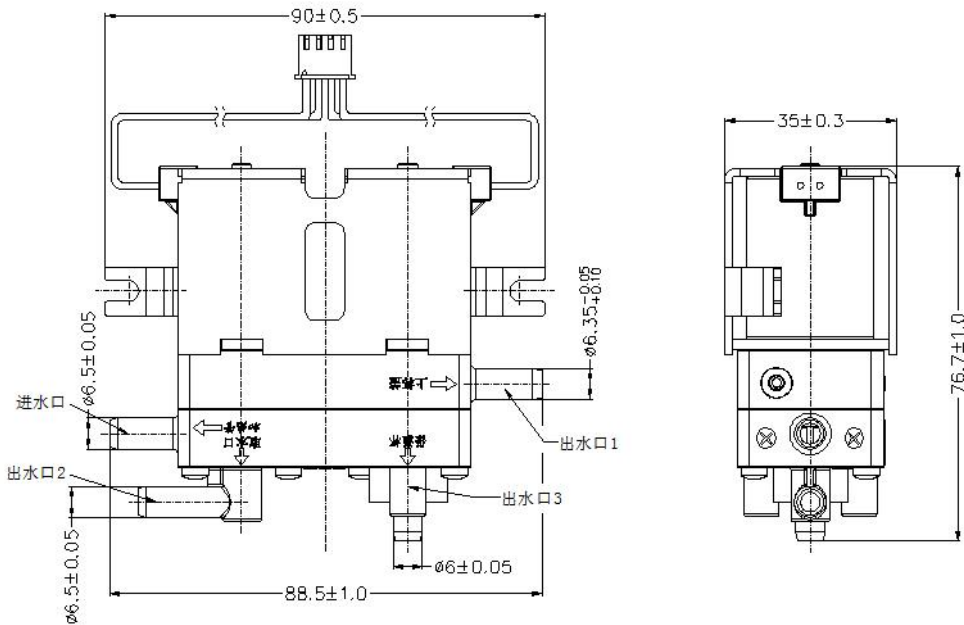
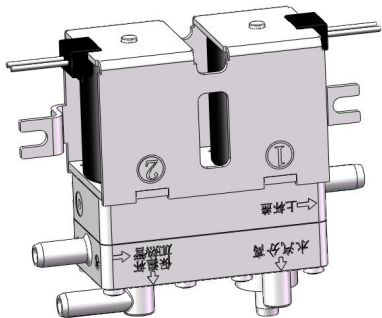
## Function and Characteristics

宝塔接头，安装方便，连接可靠；  
一进一出，通电切换

Pagoda joint connector, easy installation and reliable connection.  
One in two out, switchover when power on.

Four-way Electromagnetic Valve

型号Model: DEV01-O11



基本规格参数 Specification

电压 Rated voltage	DC12V/DC24V/DC36V/Others
适用水压 Water pressure range	0 ~ 0.1MPa
介质温度 Medium temperature	0 ~ 100℃
使用寿命 Working life	>100K times
流量 Rate of flow	0.05Mpa≥500ml/min
连接方式 Connection type	二分接杆 Connecting link

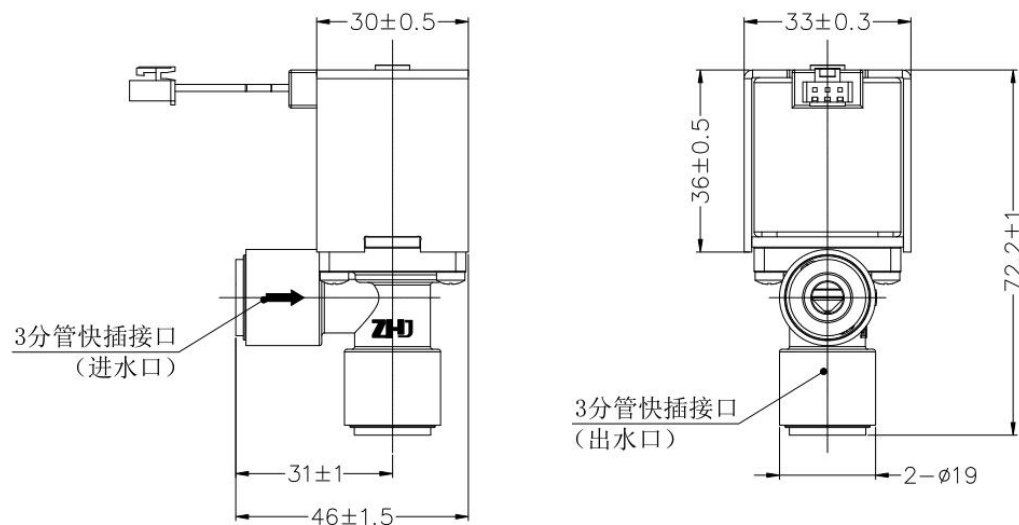
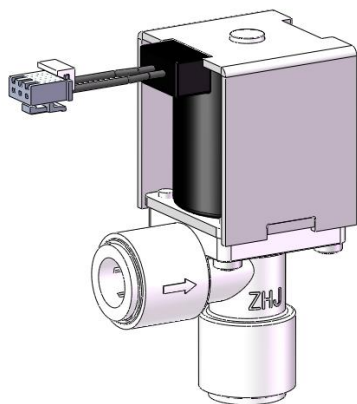
功能特点  
Function and Characteristics

二分接杆，安装方便，连接可靠；  
一进三出，通电切换

Connecting link, easy installation and reliable connection.  
One in three out, switchover when power on.

# Electromagnetic Valve

型号Model: DEV01-O151



## 基本规格参数 Specification

电压 Rated voltage	DC12V/DC24V/DC36V/Others
适用水压 Water pressure range	0 ~ 0.06MPa
介质温度 Medium temperature	0 ~ 100℃
使用寿命 Working life	> 100K times
流量Rate of flow	0.06Mpa ≥ 3L/min
连接方式 Connection type	快插 Quick-plug

## 功能特点

### Function and Characteristics

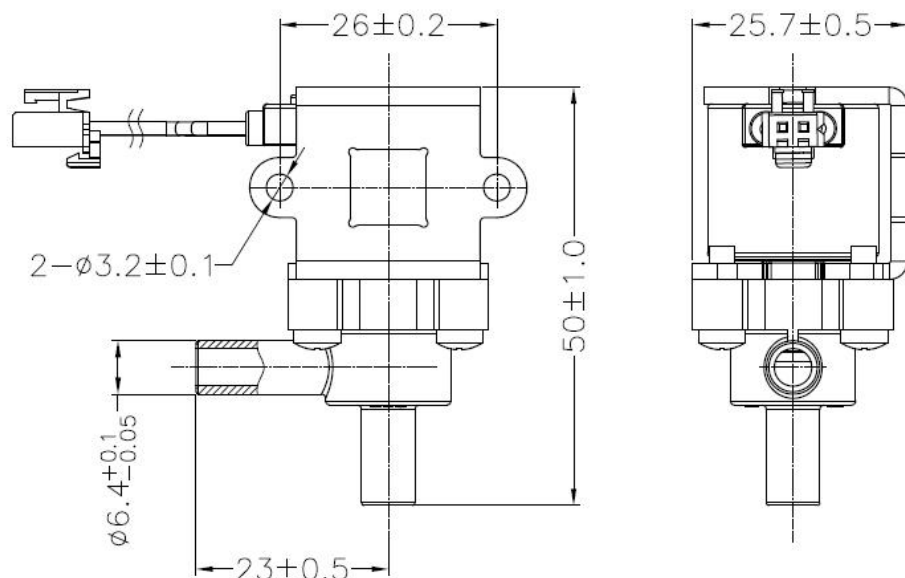
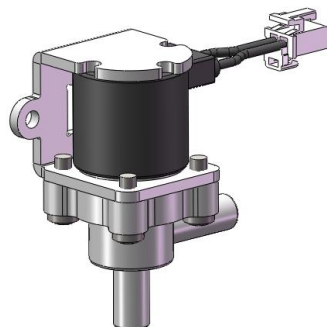
二分快接, 安装方便, 流量大

Connecting link, easy installation, large flow.



# Outlet Electromagnetic Valve

型号Model: DEV01-O13



## 基本规格参数 Specification

电压 Rated voltage	DC12V/DC24V/DC36V/Others
适用水压 Water pressure range	0 ~ 0.01MPa
介质温度 Medium temperature	0 ~ 100℃
使用寿命 Working life	>100K times
流量Rate of flow	0.01Mpa≥0.5L/min
连接方式 Connection type	二分接杆 Connecting link

## 功能特点

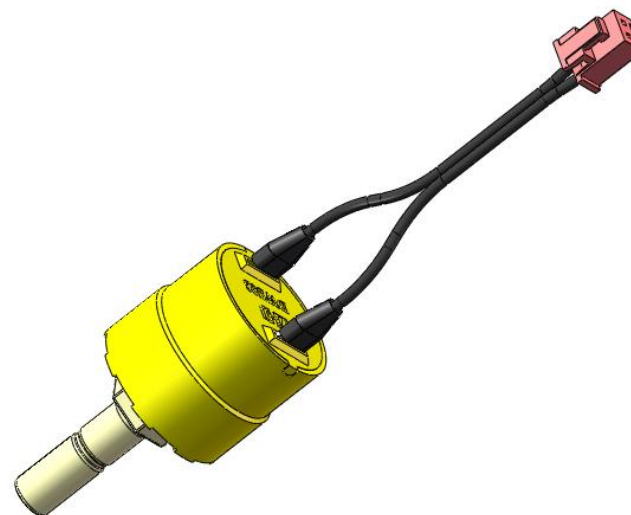
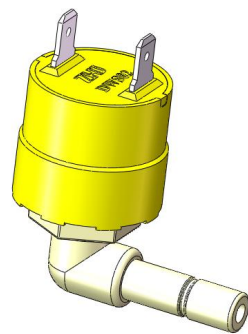
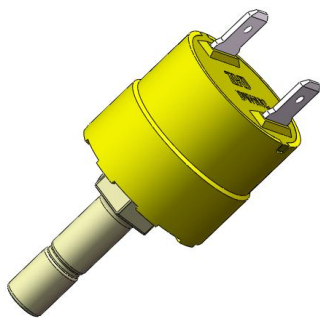
## Function and Characteristics

加装硅胶，安装方便，结构紧凑。

With silica gel,easy installation, compact structure.

# 高压开关系列

## High Pressure Switch Series

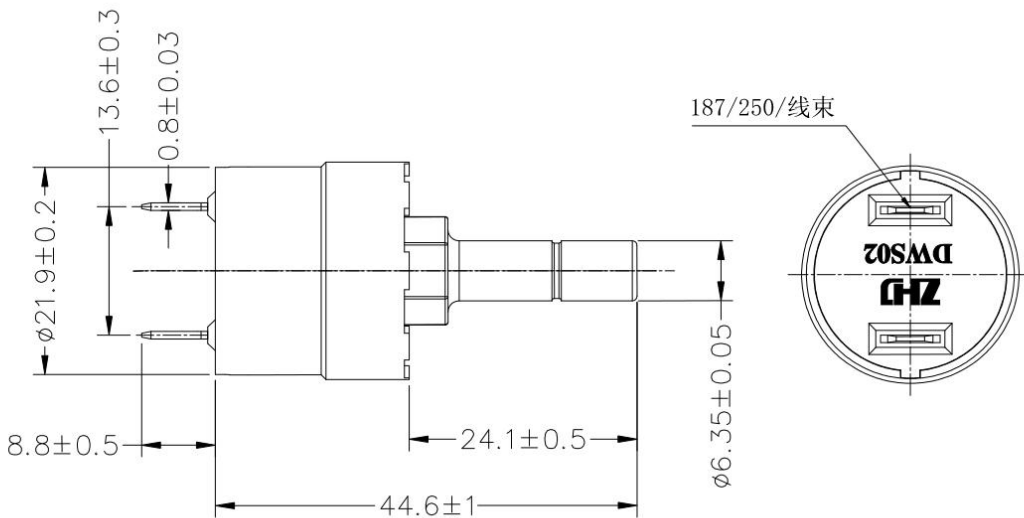
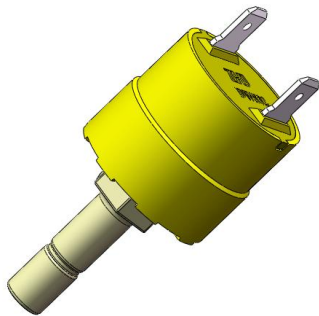


---

DWS02

# 压力开关 High Pressure Switch

型号Model: DWS02



## 基本规格参数 Specification

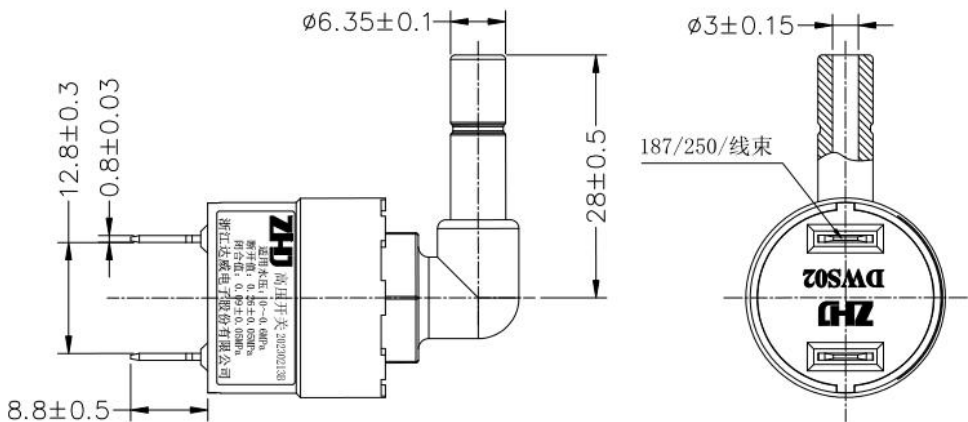
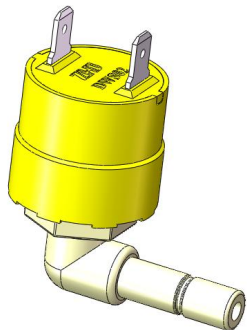
电压 Rated voltage	DC24V/AC250/1A /Others
适用水压 Water pressure range	0.09 ~ 0.26MPa、0.1 ~ 0.3MPa
介质温度 Medium temperature	0 ~ 100℃
使用寿命 Working life	>100K times
连接方式 Connection type	二分接杆 Connecting link

## 功能特点 Function and Characteristics

接杆连接，体积结构小，安装方便；  
Connecting link, small size, easy installation.

# 压力开关 High Pressure Switch

型号Model: DWS02



## 基本规格参数 Specification

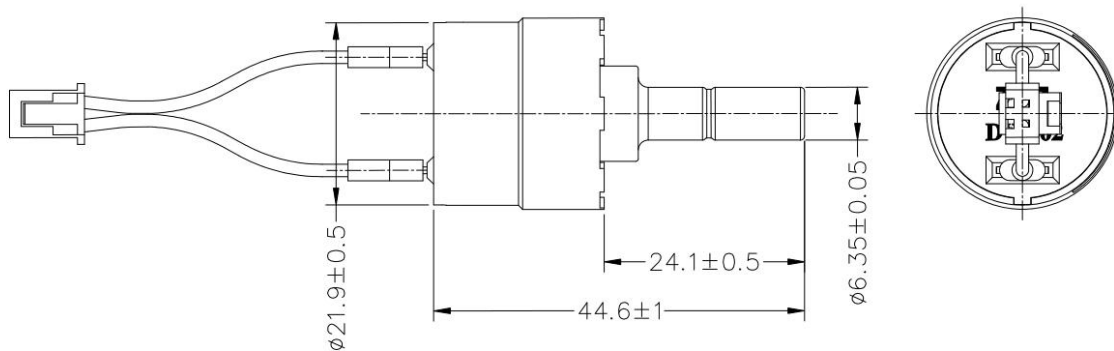
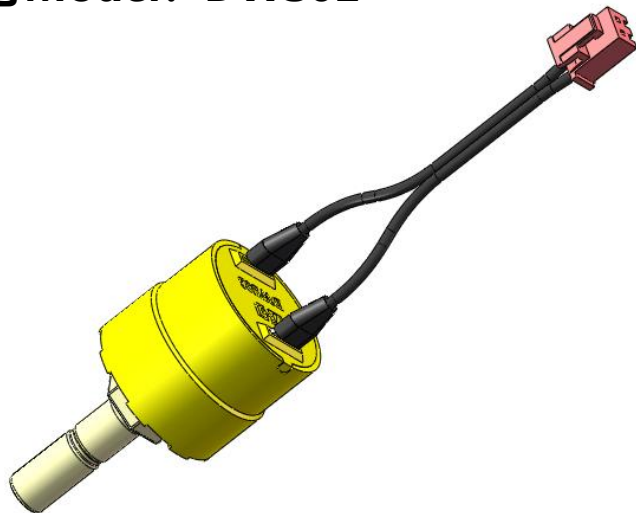
电压 Rated voltage	DC24V/AC250/1A /Others
适用水压 Water pressure range	0.09 ~ 0.26MPa、0.1 ~ 0.3MPa
介质温度 Medium temperature	0 ~ 100℃
使用寿命 Working life	>100K times
连接方式 Connection type	二分接杆 Connecting link

## 功能特点 Function and Characteristics

接杆连接，体积结构小，安装方便；  
Connecting link, small size, easy installation.

# 压力开关 High Pressure Switch

型号Model: DWS02



## 基本规格参数 Specification

电压 Rated voltage	DC24V/AC250/1A /Others
适用水压 Water pressure range	0.09 ~ 0.26MPa、0.1 ~ 0.3MPa
介质温度 Medium temperature	0 ~ 100℃
使用寿命 Working life	>100K times
连接方式 Connection type	二分接杆 Connecting link

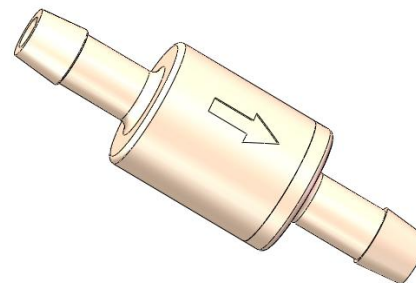
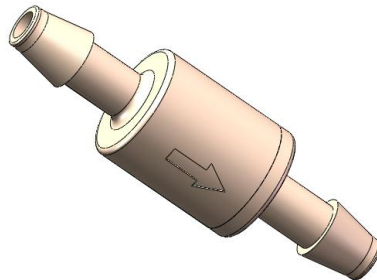
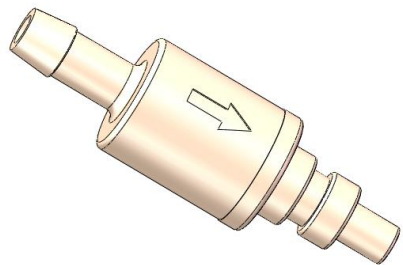
## 功能特点 Function and Characteristics

接杆连接，体积结构小，安装方便；

Connecting link, small size, easy installation.

# 单向阀系列

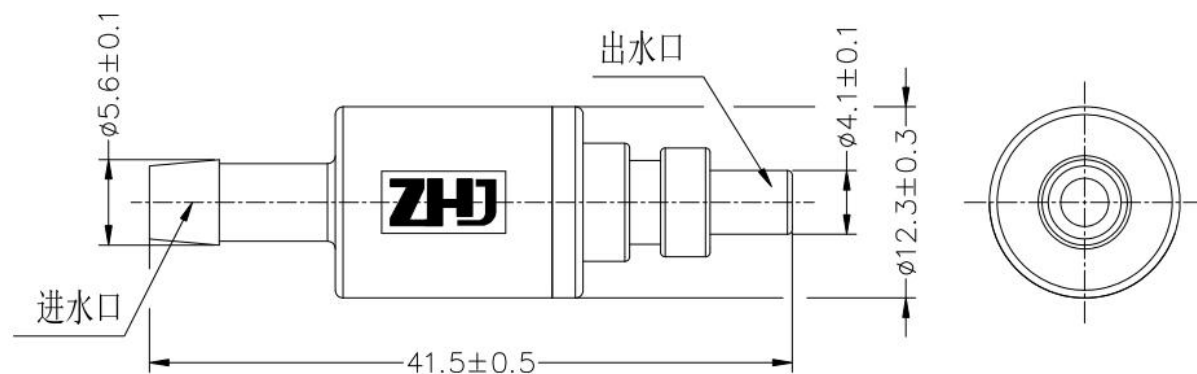
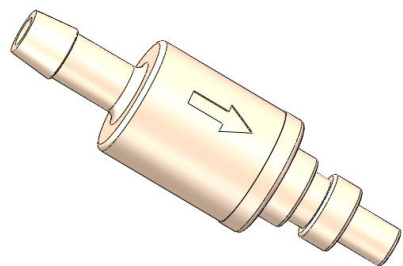
## Check Vavle Series



---

**DEV01**

型号Model: DEV01



### 基本规格参数 Specification

适用水压 Water pressure range	0~2.5MPa
打开压力 Water pressure range	0~10KPa
介质温度 Medium temperature	0 ~ 50℃
使用寿命 Working life	>100K times
连接方式 Connection type	宝塔/咖啡机快接接头 Pagoda/coffee machine quick connector

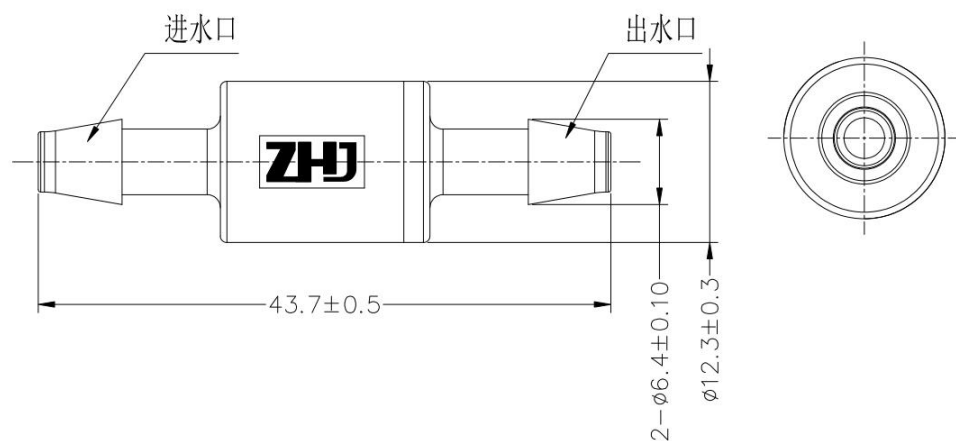
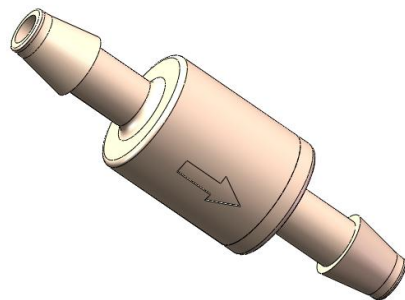
### 功能特点 Function and Characteristics

快速连接，体积结构小，安装方便；

Quick connection, small size, easy installation.



型号Model: DEV01



### 基本规格参数 Specification

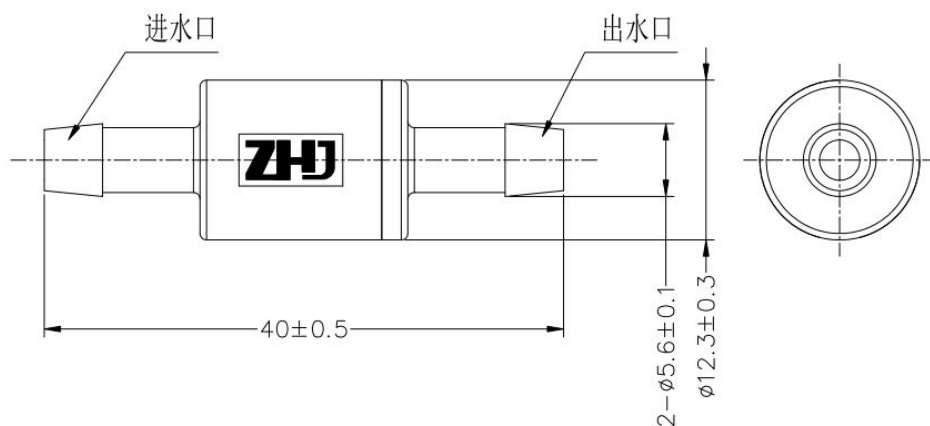
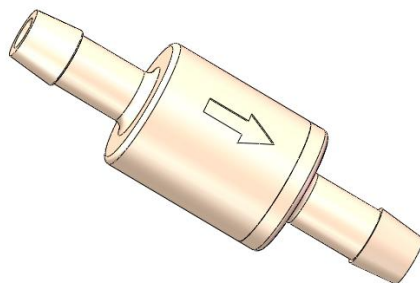
适用水压 Water pressure range	0~2.5MPa
打开压力 Water pressure range	8~19KPa
介质温度 Medium temperature	0 ~ 50℃
使用寿命 Working life	>100K times
连接方式 Connection type	宝塔接头 Pagoda joint connector

### 功能特点 Function and Characteristics

快速连接，体积结构小，安装方便；

Quick connection, small size, easy installation.

型号Model: DEV01



### 基本规格参数 Specification

适用水压 Water pressure range	0~2.5MPa
打开压力 Water pressure range	20~40KPa
介质温度 Medium temperature	0 ~ 50℃
使用寿命 Working life	>100K times
连接方式 Connection type	宝塔接头 Pagoda joint connector

### 功能特点

### Function and Characteristics

快速连接，体积结构小，安装方便；

Quick connection, small size, easy installation.